

CLOVIS, NEW MEXICO

RNAV (GPS) RWY 31

APCH CRS 308°
 Rwy Idg 8196
 TDZE 4270
 Arprt Elev 4295

- (USAF)

CANNON AFB (KCVS)

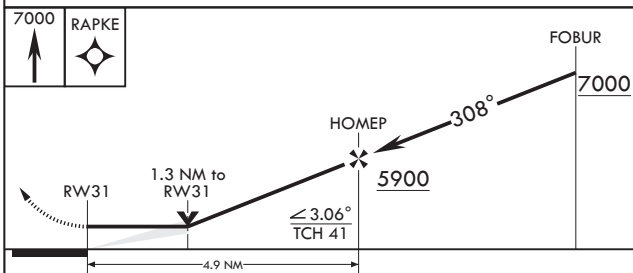
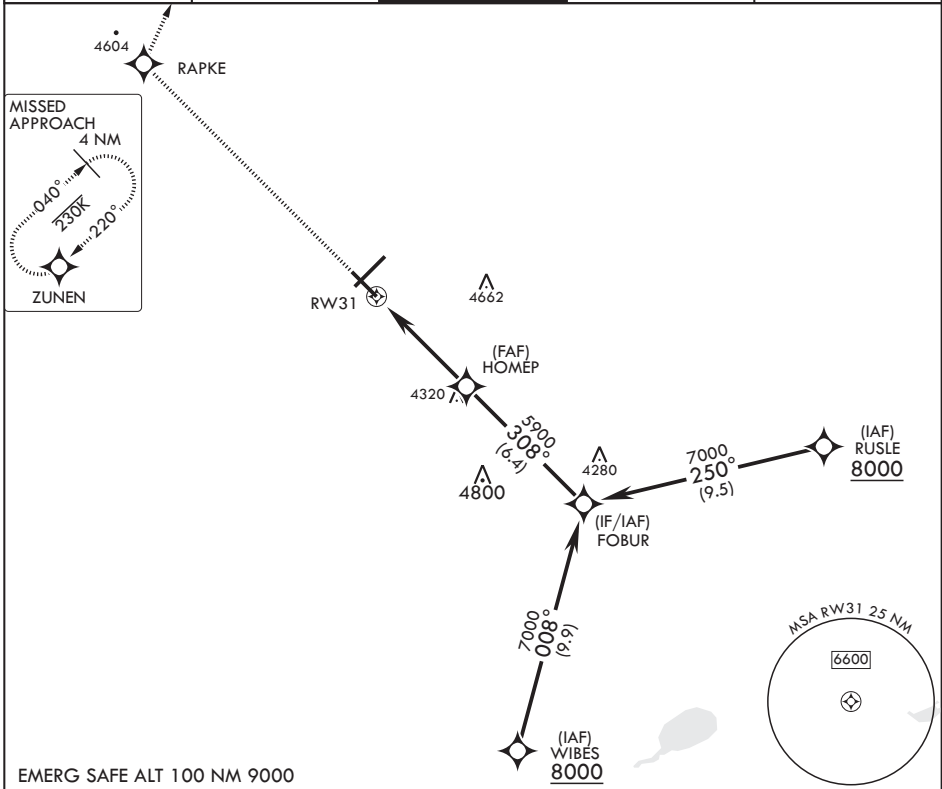
RNP APCH



MISSED APPROACH: Climb to 7000 direct RAPKE, then turn right to ZUNEN and hold.

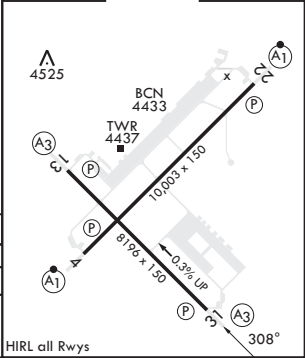
* When ALS inop, increase CAT AB vis to 1 mile, CAT CDE vis to 1 3/8 miles.

ATIS 119.1 269.9	CANNON APP CON 118.425 352.1	TOWER 120.4 270.25	GND CON 121.9 275.8	CLNC DEL 120.2 293.225
---------------------	---------------------------------	-----------------------	------------------------	---------------------------



ELEV 4295 TDZE 4270

CATEGORY	A	B	C	D	E
LNVA MDA*	4720-½	450 (500-½)	4720-⅞	450	(500-⅞)
CIRCLING	4840-1	545 (600-1)	4860-1½ 565 (600-1½)	5000-2¼ 705 (800-2¼)	5020-2½ 725 (800-2½)



CLOVIS, NEW MEXICO

34°23'N - 103°19'W

CANNON AFB (KCVS)

Amdt 5 28DEC23

RNAV (GPS) RWY 31

SW-1, 28 NOV 2024 to 26 DEC 2024

SW-1, 28 NOV 2024 to 26 DEC 2024