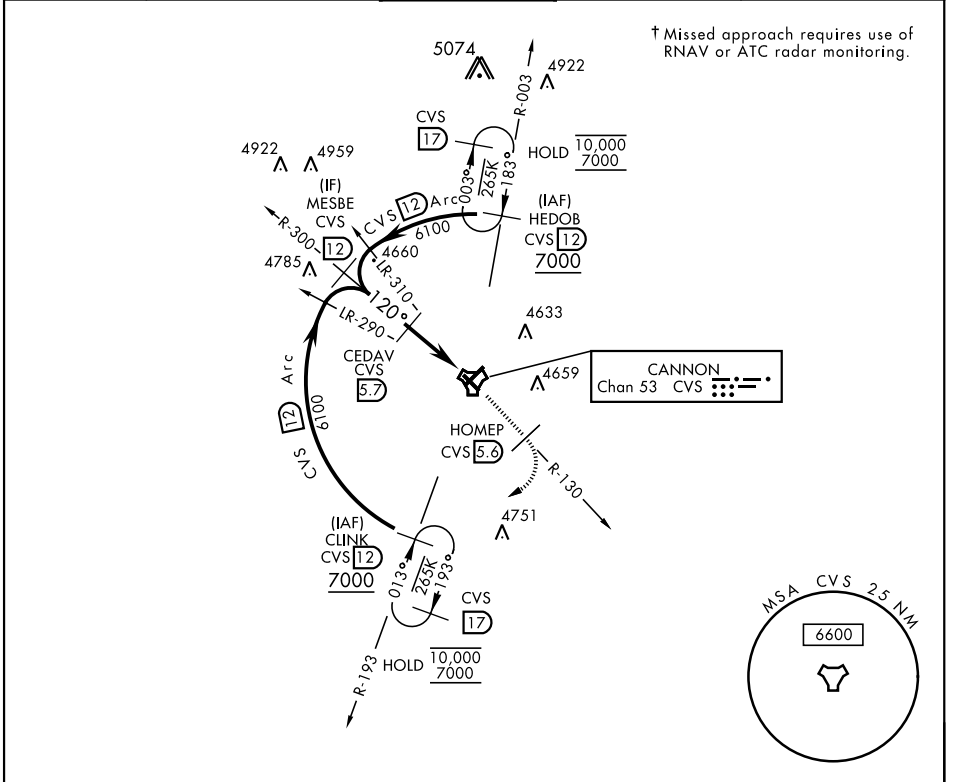


CLOVIS, NEW MEXICO

TACAN RWY 13

TACAN CVS Chan 53	APCH CRS 120°	Rwy Idg 8196 TDZE 4294 Arprt Elev 4295	AL-512 [USAF]	CANNON AFB (KCVS)
<p>▼ * When ALS inop, increase CAT AB vis to 1 mile, CAT CDE vis to 1½ miles.</p>			<p>SSALR (A3)</p>	<p>† MISSED APPROACH: Climb to 6000 out CVS TACAN R-130 to 5.6 DME (HOMEP) then turn right climbing to 7000 intercept CVS R-193 to 12 DME (CLINK) and hold.</p>

ATIS 119.1 269.9	CANNON APP CON 118.425 352.1	CANNON TOWER 120.4 270.25	GND CON 121.9 275.8	CLNC DEL 120.2 293.225
----------------------------	--	-------------------------------------	-------------------------------	----------------------------------



EMERG SAFE ALT 100 NM 9000

	6000 CVS R-130	HOMEP CVS R-130 5.6	7000 CLINK CVS R-193 12	ELEV 4295	TDZE 4294
--	-------------------	---------------------------	----------------------------------	-----------	-----------

Detailed approach diagram showing altitudes and distances:

- MESBE R-300 (12) at 6100, 120° to CEDAV (5.7) at 6000.
- CEDAV (5.7) to TACAN (2.1) at 5 NM, 0.1 NM to HASRU (7).
- MSA CVS 2.5 NM, 6600.
- Obstacles: 4421, 4433, 4327, 4437.
- Navigation: R-130, R-193, R-003.

CATEGORY	A	B	C	D	E
S-13*	4800-¾	506 (600-¾)	4800-1	506	(600-1)
CIRCLING	4840-1	545 (600-1)	4860-1½ 565 (600-1½)	5000-2¼ 705 (800-2¼)	5020-2½ 725 (800-2½)

HIRL all rwys

CLOVIS, NEW MEXICO 34° 23' N - 103° 19' W CANNON AFB (KCVS)

Amdt 2 09NOV17

TACAN RWY 13

SW-1, 28 NOV 2024 to 26 DEC 2024

SW-1, 28 NOV 2024 to 26 DEC 2024