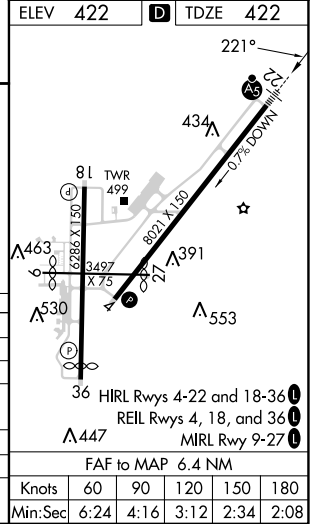
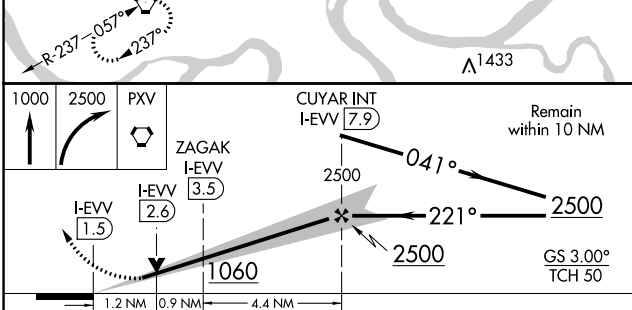
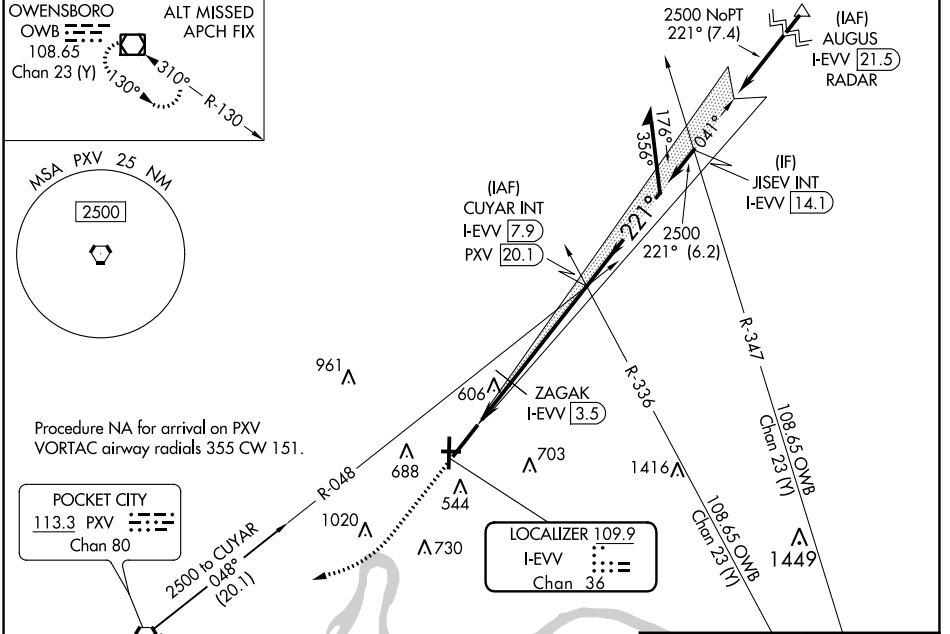


LOC/DME I-EVV 109.9 Chan 36	APP CRS 221°	Rwy Idg TDZE 422 Apt Elev 422	8021
---	------------------------	---	-------------

ILS or LOC RWY 22

EVANSVILLE RGNL (E V V)

RADAR or DME required for procedure entry at AUGUS.					MALSR	MISSED APPROACH: Climb to 1000 then climbing right turn to 2500 direct PXV VORTAC and hold.
ATIS 120.2	EVANSVILLE APP CON ★ 124.025 290.9	EVANSVILLE TOWER ★ 118.7 (CTAF) 257.8	GND CON 121.9	CLNC DEL 126.6	UNICOM 122.95	



CATEGORY	A	B	C	D
S-ILS 22*	622/24		200 (200-½)	
S-LOC 22	1060/24	638 (700-½)	1060-1¾	638 (700-1¾)
CIRCLING	1060-1	638 (700-1)	1060-1¾ 638 (700-1¾)	1060-2 638 (700-2)
ZAGAK FIX MINIMUMS (DME REQUIRED)				
S-LOC 22	840/24	418 (500-½)	840/40	418 (500-¾)
CIRCLING	920-1 498 (500-1)	1040-1 618 (700-1)	1040-1¾ 618 (700-1¾)	1040-2 618 (700-2)

EC-2, 28 NOV 2024 to 26 DEC 2024

EC-2, 28 NOV 2024 to 26 DEC 2024