

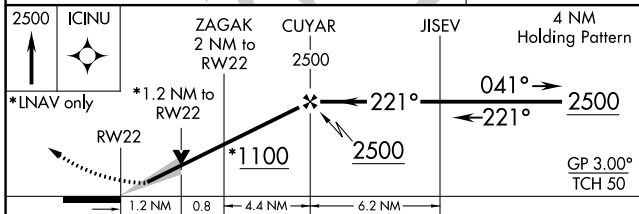
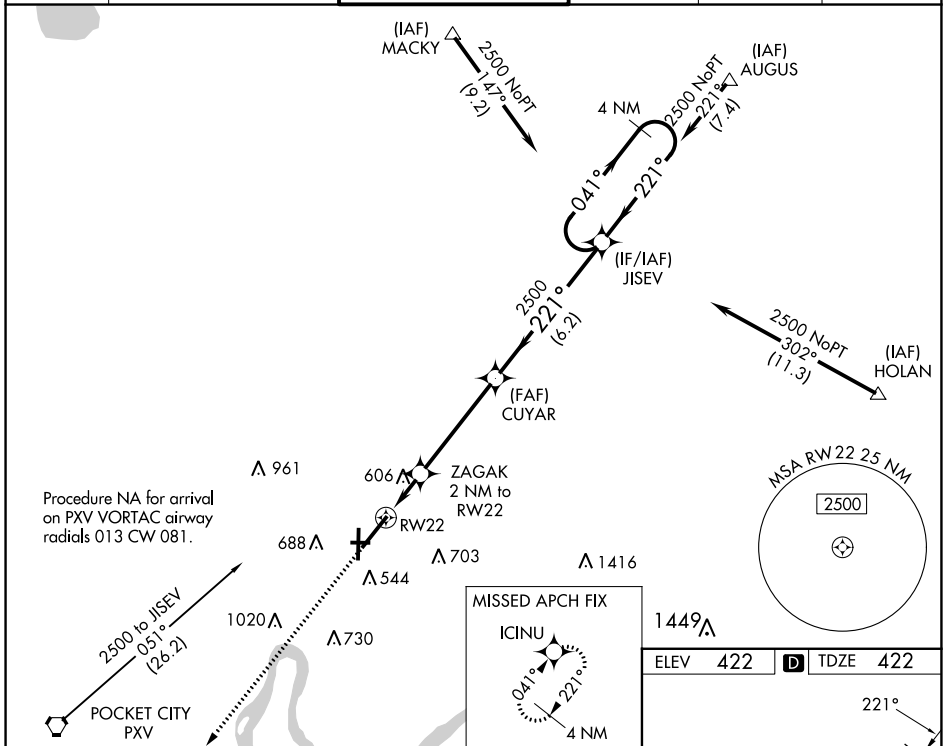
WAAS CH <b>42512</b> <b>W22A</b>	APP CRS <b>221°</b>	Rwy Idg TDZE <b>422</b> Apt Elev <b>422</b>	<b>8021</b>
--	------------------------	---	-------------

# RNAV (GPS) RWY 22

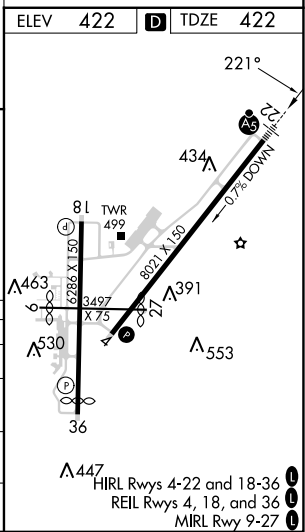
EVANSVILLE RGNL (EVV)

<p><b>ASR</b></p> <p>For uncompensated Baro-VNAV systems, LNAV/VNAV NA below -15°C (5°F) or above 54°C (130°F). DME/DME RNP-0.3 NA. Circling Rwy 9 NA at night. ** RVR 1800 authorized with the use of FD or AP or HUD to DA.</p>	<p><b>MALSR</b></p>	<p><b>MISSED APPROACH:</b> Climb to 2500 direct ICINU and hold.</p>
	<p><b>ASR</b></p>	

ATIS <b>120.2</b>	EVANSVILLE APP CON ★ <b>124.025 290.9</b>	EVANSVILLE TOWER ★ <b>118.7 (CTAF) 257.8</b>	GND CON <b>121.9</b>	CLNC DEL <b>126.6</b>	UNICOM <b>122.95</b>
----------------------	--	---	-------------------------	--------------------------	-------------------------



CATEGORY	A	B	C	D
LPV DA		**622/24	200 (200-½)	
LNAV/VNAV DA		840/45	418 (500-¾)	
LNAV MDA	860/24	438 (500-½)	860/40	438 (500-¾)
<b>C</b> CIRCLING	920-1 498 (500-1)	1040-1 618 (700-1)	1040-1¾ 618 (700-1¾)	1040-2 618 (700-2)



EC-2, 28 NOV 2024 to 26 DEC 2024

EC-2, 28 NOV 2024 to 26 DEC 2024