

RNAV (RNP) Z RWY 12

LEWISTON/NEZ PERCE COUNTY (LWS)

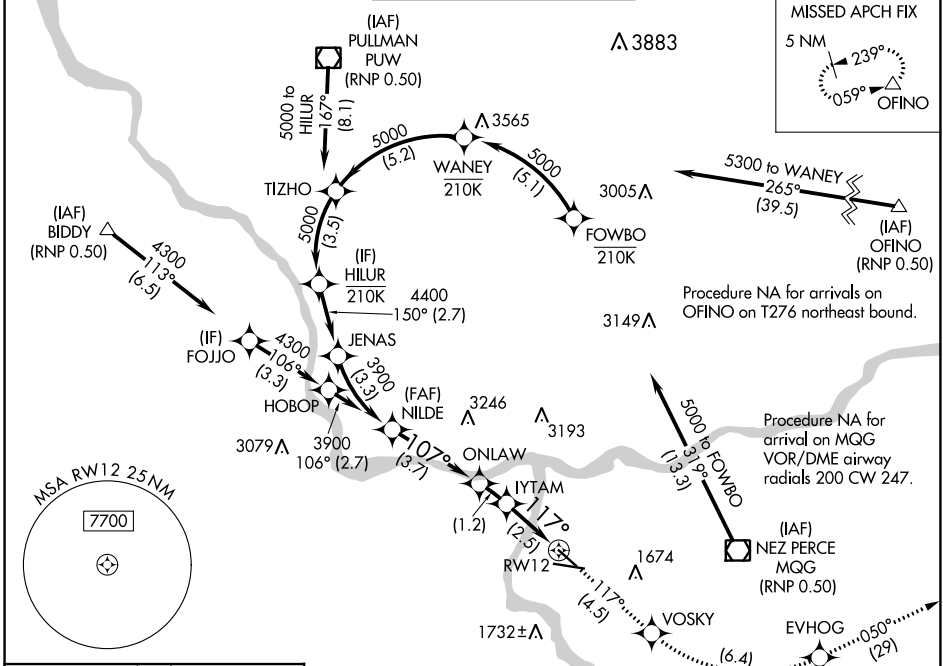
APP CRS	Rwy Idg	4750
117°	TDZE	1417
	Apt Elev	1442

RNP AR APCH-GPS.

▼ For uncompensated Baro-VNAV systems, procedure NA below -12°C or above 54°C.

MISSED APPROACH: Climb to 6000 on track 117° to VOSKY then left turn 6000 to EVHOG and on track 050° to OFINO and hold.
 *Missed approach requires minium climb of 260 feet per NM to 3400.

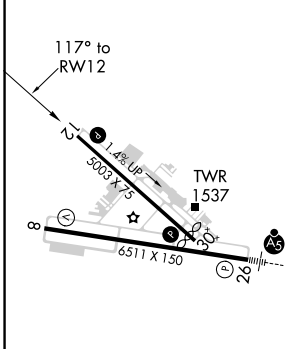
ASOS 135.575	SEATTLE CENTER 123.95 290.55	LEWISTON TOWER ★ 119.4 (CTAF) 0 318.8	GND CON 121.9	UNICOM 122.95
------------------------	--	---	-------------------------	-------------------------



NW-1, 28 NOV 2024 to 26 DEC 2024

NW-1, 28 NOV 2024 to 26 DEC 2024

ELEV	1442	D	TDZE	1417
------	-------------	---	------	-------------



	NILDE	ONLAW	IYTAM	VOSKY	EVHOG	tr 050°	OFINO
	3900	2659	2254	6000	6000		△
	See Planview for multiple IF locations.			VGSi and RNAV glidepath not coincident (VGSi Angle 3.00/TCH 40).			
	3.7 NM			1.2	2.5 NM		
CATEGORY	A	B	C	D			
RNP 0.30 DA*	1685-7 ⁸		268 (300-7 ⁸)				
RNP 0.30 DA	1889-1 ³ ⁸		472 (500-1 ³ ⁸)				

- REIL Rwy 8
- REIL Rwy 12
- HIRL Rwy 8-26
- MIRL Rwy 12-30

LEWISTON, IDAHO
 Orig-B 07OCT21

46°22'N-117°01'W

LEWISTON/NEZ PERCE COUNTY (LWS)
RNAV (RNP) Z RWY 12