

APP CRS <b>084°</b>	Rwy Idg <b>6511</b>
	TDZE <b>1440</b>
	Apt Elev <b>1442</b>

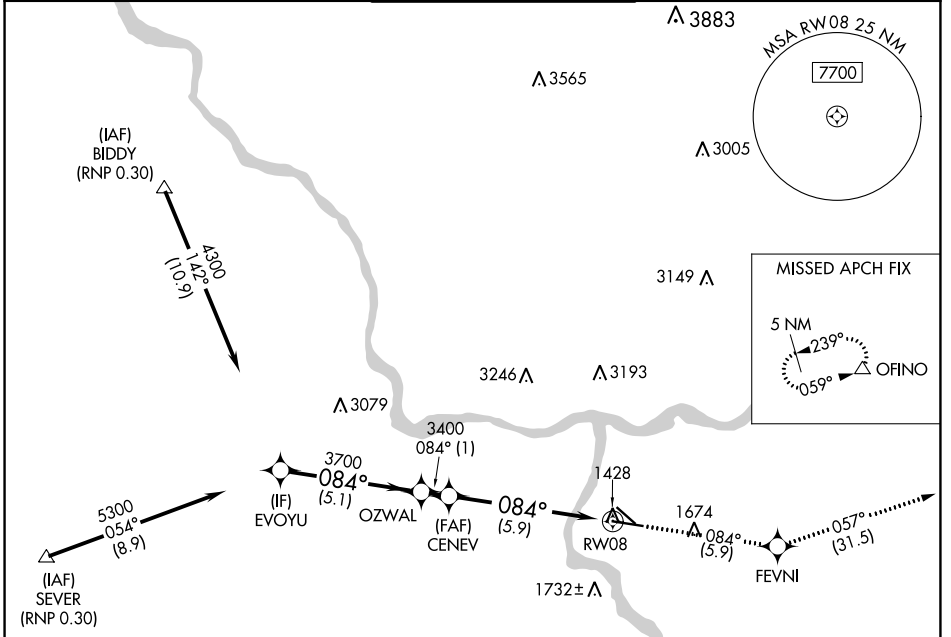
# RNAV (RNP) Z RWY 8

LEWISTON/NEZ PERCE COUNTY (LWS)

**GPS required.** For uncompensated Baro-VNAV systems, procedure NA below -16°C (3°F) or above 46°C (115°F). When VGSI inop, procedure NA at night.

**MISSED APPROACH:** Climb to 6000 via track 084° to FEVNI and via track 057° to OFINO and hold.

ASOS <b>135.575</b>	SEATTLE CENTER <b>123.95 290.55</b>	LEWISTON TOWER ★ <b>119.4 (CTAF) 0 318.8</b>	GND CON <b>121.9</b>	UNICOM <b>122.95</b>
------------------------	--	---	-------------------------	-------------------------

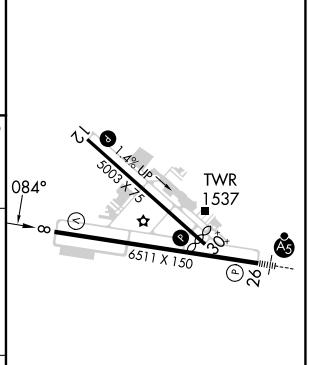
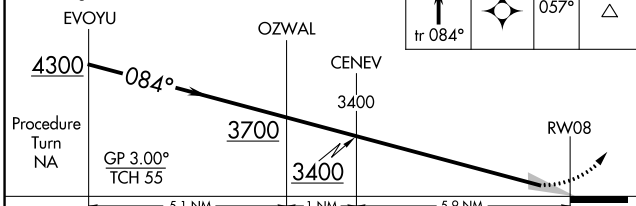


NW-1, 28 NOV 2024 to 26 DEC 2024

NW-1, 28 NOV 2024 to 26 DEC 2024

ELEV 1442	TDZE 1440
-----------	-----------

VGSI and RNAV glidepath not coincident (VGSI Angle 3.00/TCH 45).



CATEGORY	A	B	C	D
RNP 0.30 DA	1752-1 312 (400-1)			

## AUTHORIZATION REQUIRED

- REIL Rwy 8
- REIL Rwy 12
- HIRL Rwy 8-26
- MIRL Rwy 12-30