

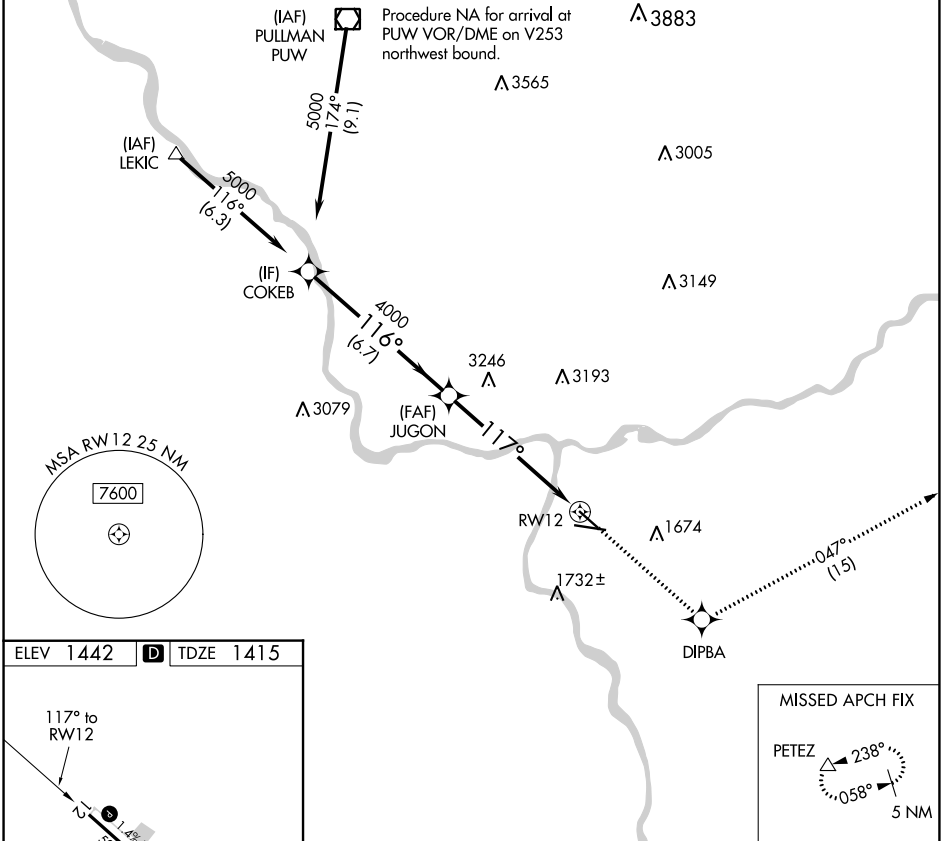
WAAS CH 56500 W12A	APP CRS 117°	Rwy Idg 4750 TDZE 1415 Apt Elev 1442
--	------------------------	---

RNAV (GPS) Y RWY 12

LEWISTON/NEZ PERCE COUNTY (LWS)

▼ ▲ NA	When local altimeter setting not received, procedure NA. DME/DME RNP-0.3 NA. Helicopter visibility reduction below ¾ SM NA.	MISSED APPROACH: Climb to 5700 direct DIPBA and on track 047° to PETEZ and hold, continue climb-in-hold to 5700.
-------------------------	--	--

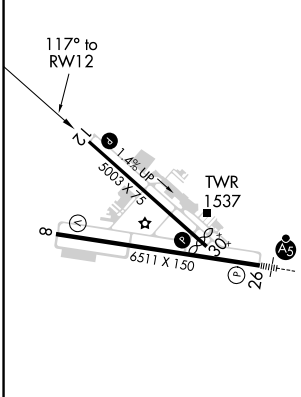
ASOS 135.575	SEATTLE CENTER 123.95 290.55	LEWISTON TOWER ★ 119.4 (CTAF) 0 318.8	GND CON 121.9	UNICOM 122.95
------------------------	--	---	-------------------------	-------------------------



NW-1, 28 NOV 2024 to 26 DEC 2024

NW-1, 28 NOV 2024 to 26 DEC 2024

ELEV 1442	D	TDZE 1415
------------------	----------	------------------



- REIL Rwy 8 **1**
- REIL Rwy 12
- HIRL Rwy 8-26
- MIRL Rwy 12-30

MISSED APCH FIX

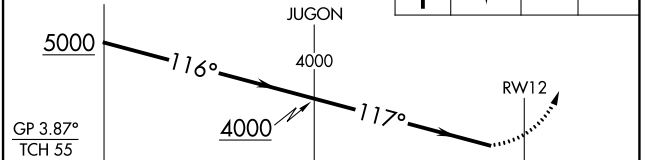
PETEZ \triangle 238°

058°

5 NM

VGSI and RNAV glidepath not coincident (VGSI Angle 3.00/TCH 40).

5700	DIPBA	tr 047°	PETEZ
------	-------	---------	-------



CATEGORY	A	B	C	D
LPV DA	1793-1	378 (400-1)		NA