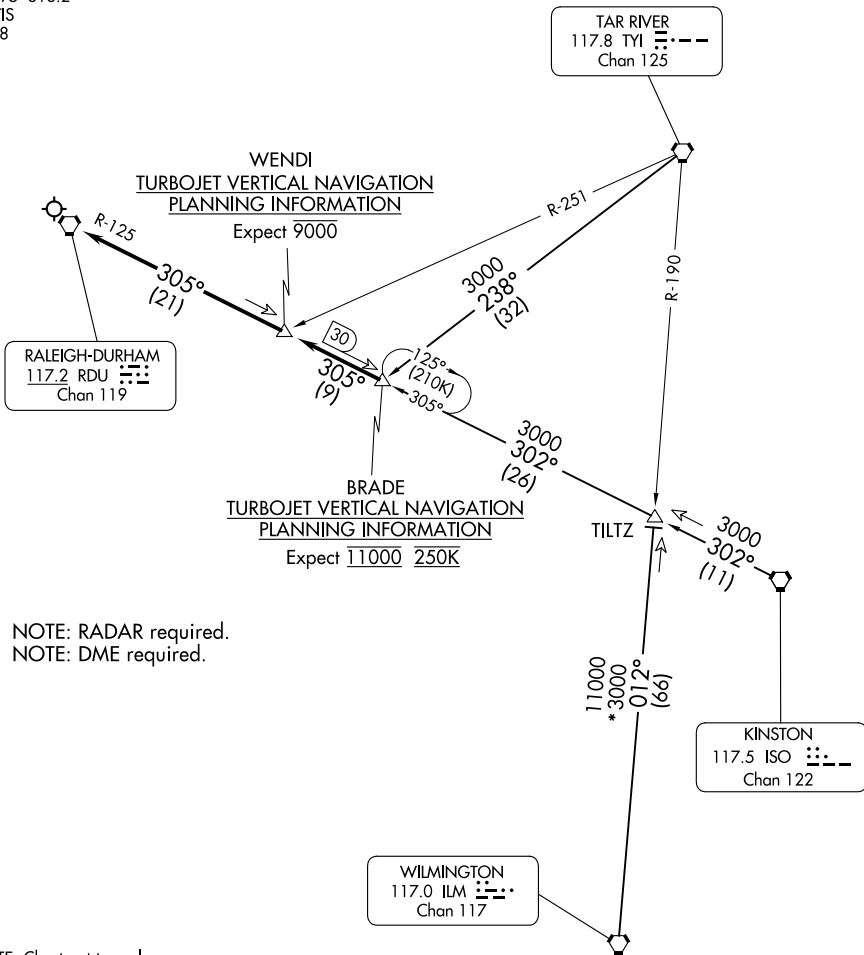


(BRADE.BRADE6) 24193
BRADE SIX ARRIVAL

AL-516 (FAA)

RALEIGH-DURHAM INTL (RDU)
 RALEIGH/DURHAM, NORTH CAROLINA

RALEIGH APP CON
 124.95 318.2
 D-ATIS
 123.8



NOTE: Chart not to scale.

ARRIVAL ROUTE DESCRIPTION

KINSTON TRANSITION (ISO.BRADE6): From over ISO VORTAC on ISO R-302 to BRADE, thence

TAR RIVER TRANSITION (TYI.BRADE6): From over TYI VORTAC on TYI R-238 to BRADE, thence

WILMINGTON TRANSITION (ILM.BRADE6): From over ILM VORTAC on ILM R-012 to TILTZ, then on ISO R-302 to BRADE, thence

. . . . from over BRADE on RDU R-125 to RDU VORTAC. Expect RADAR vectors to final approach course after WENDI.

BRADE SIX ARRIVAL
 (BRADE.BRADE6) 24MAY18

RALEIGH/DURHAM, NORTH CAROLINA
 RALEIGH-DURHAM INTL (RDU)

SE-2, 28 NOV 2024 to 26 DEC 2024

SE-2, 28 NOV 2024 to 26 DEC 2024