

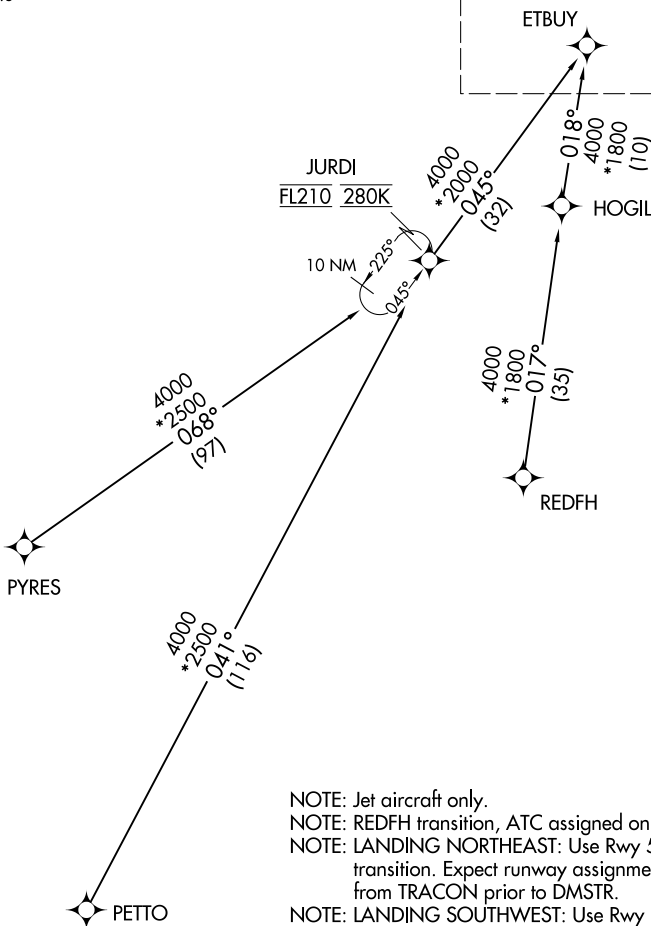
DMSTR TWO ARRIVAL(RNAV) Transition Routes

RALEIGH-DURHAM INTL (RDU)
RALEIGH/DURHAM, NORTH CAROLINA

RALEIGH APP CON
127.675 307.9
D-ATIS
123.8

RNAV 1-DME/DME/IRU or GPS.
RADAR required.

See following page
for Arrival Routes



- NOTE: Jet aircraft only.
- NOTE: REDFH transition, ATC assigned only.
- NOTE: LANDING NORTHEAST: Use Rwy 5L transition. Expect runway assignment from TRACON prior to DMSTR.
- NOTE: LANDING SOUTHWEST: Use Rwy 23R transition. Expect runway assignment from TRACON prior to DMSTR.

NOTE: Chart not to scale.

JURDI TRANSITION (JURDI.DMSTR2)
PETTO TRANSITION (PETTO.DMSTR2)
PYRES TRANSITION (PYRES.DMSTR2)
REDFH TRANSITION (REDFH.DMSTR2)

(CONTINUED ON FOLLOWING PAGE)

SE-2, 28 NOV 2024 to 26 DEC 2024

SE-2, 28 NOV 2024 to 26 DEC 2024

(ETBUY.DMSTR2) 24081

AL-516 (FAA)

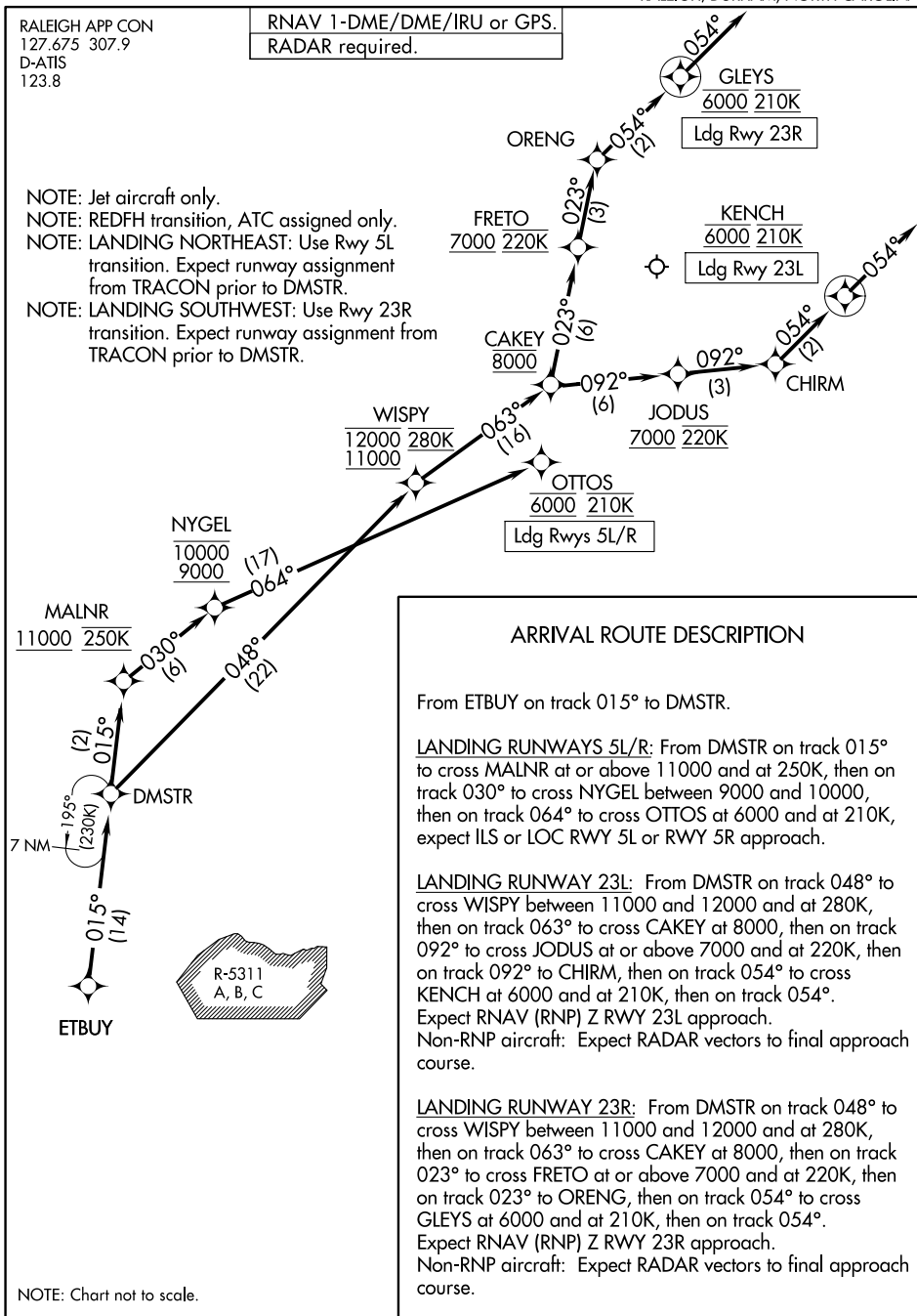
RALEIGH-DURHAM INTL (RDU)
RALEIGH/DURHAM, NORTH CAROLINA

DMSTR TWO ARRIVAL(RNAV) Arrival Routes

RALEIGH APP CON
127.675 307.9
D-ATIS
123.8

RNAV 1-DME/DME/IRU or GPS.
RADAR required.

NOTE: Jet aircraft only.
NOTE: REDFH transition, ATC assigned only.
NOTE: LANDING NORTHEAST: Use Rwy 5L transition. Expect runway assignment from TRACON prior to DMSTR.
NOTE: LANDING SOUTHWEST: Use Rwy 23R transition. Expect runway assignment from TRACON prior to DMSTR.



ARRIVAL ROUTE DESCRIPTION

From ETBUY on track 015° to DMSTR.

LANDING RUNWAYS 5L/R: From DMSTR on track 015° to cross MALNR at or above 11000 and at 250K, then on track 030° to cross NYGEL between 9000 and 10000, then on track 064° to cross OTTOS at 6000 and at 210K, expect ILS or LOC RWY 5L or RWY 5R approach.

LANDING RUNWAY 23L: From DMSTR on track 048° to cross WISPY between 11000 and 12000 and at 280K, then on track 063° to cross CAKEY at 8000, then on track 092° to cross JODUS at or above 7000 and at 220K, then on track 092° to CHIRM, then on track 054° to cross KENCH at 6000 and at 210K, then on track 054°. Expect RNAV (RNP) Z RWY 23L approach. Non-RNP aircraft: Expect RADAR vectors to final approach course.

LANDING RUNWAY 23R: From DMSTR on track 048° to cross WISPY between 11000 and 12000 and at 280K, then on track 063° to cross CAKEY at 8000, then on track 023° to cross FRETO at or above 7000 and at 220K, then on track 023° to ORENG, then on track 054° to cross GLEYS at 6000 and at 210K, then on track 054°. Expect RNAV (RNP) Z RWY 23R approach. Non-RNP aircraft: Expect RADAR vectors to final approach course.

NOTE: Chart not to scale.

SE-2, 28 NOV 2024 to 26 DEC 2024

SE-2, 28 NOV 2024 to 26 DEC 2024

DMSTR TWO ARRIVAL(RNAV) Arrival Routes
(ETBUY.DMSTR2) 21MAR24

RALEIGH/DURHAM, NORTH CAROLINA
RALEIGH-DURHAM INTL (RDU)