

LOC/DME I-DMP 111.7 Chan 54	APP CRS 234°	Rwy Idg TDZE Apt Elev 10000 409 435
---	------------------------	---

ILS RWY 23R (CAT II & III)

RALEIGH-DURHAM INTL (RDU)

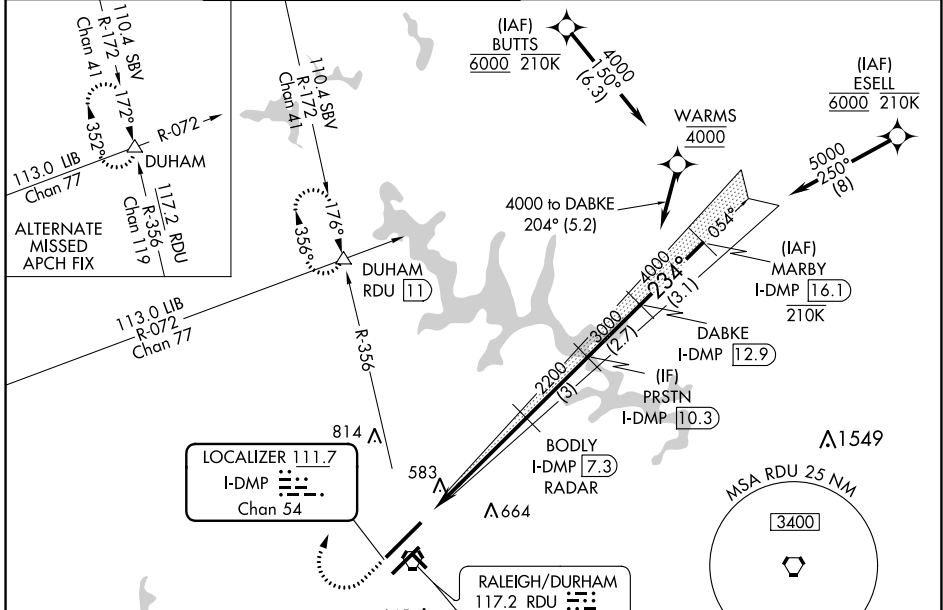
RNAV 1-DME/DME/IRU or GPS or RADAR required for procedure entry.

Simultaneous approach authorized.

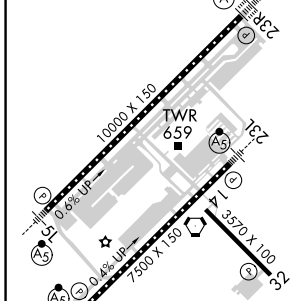
ALSF-2

MISSED APPROACH: Climb to 1000 then climbing right turn to 2200 on RDU VORTAC R-356 to DUHAM INT/ RDU 11 DME and hold.

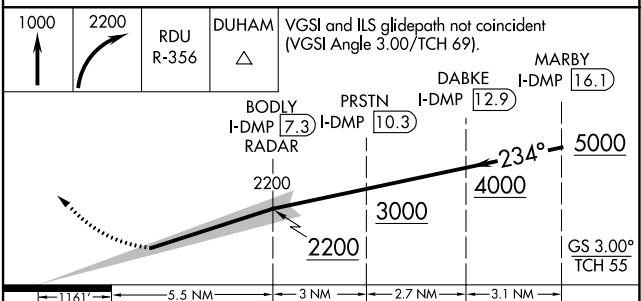
D-ATIS 123.8	RALEIGH APP CON 127.675 307.9	(EAST) RALEIGH TOWER 127.45 257.8 Rwys 5R-23L and 14-32	(WEST) 119.3 257.8 Rwy 5L-23R	(EAST) GND CON 121.9 348.6 Rwys 5R-23L and 14-32	(WEST) 121.7 348.6 Rwy 5L-23R	CLNC DEL 120.1	CPDLC
------------------------	---	--	--	---	--	--------------------------	-------



ELEV 435	D	TDZE 409
----------	----------	----------



REIL Rwy 32	MIRL Rwy 14-32	HIRL Rwys 5R-23L and 5L-23R	TDZ/CL Rwys 23R, 23L and 5L
-------------	----------------	-----------------------------	-----------------------------



CATEGORY	A	B	C	D
S-ILS 23R	CAT II RA 105/12 100 DA 509			
S-ILS 23R	CAT III RVR 06			

CATEGORY II & III ILS - SPECIAL AIRCREW & AIRCRAFT CERTIFICATION REQUIRED

SE-2, 28 NOV 2024 to 26 DEC 2024

SE-2, 28 NOV 2024 to 26 DEC 2024