

LOC/DME I-LEI 108.5 Chan 22	APP CRS 234°	Rwy Idg 7500 TDZE 435 Apt Elev 435
---	------------------------	---

ILS or LOC RWY 23L

RALEIGH-DURHAM INTL (RDU)

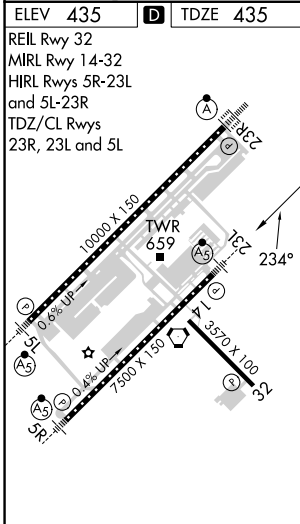
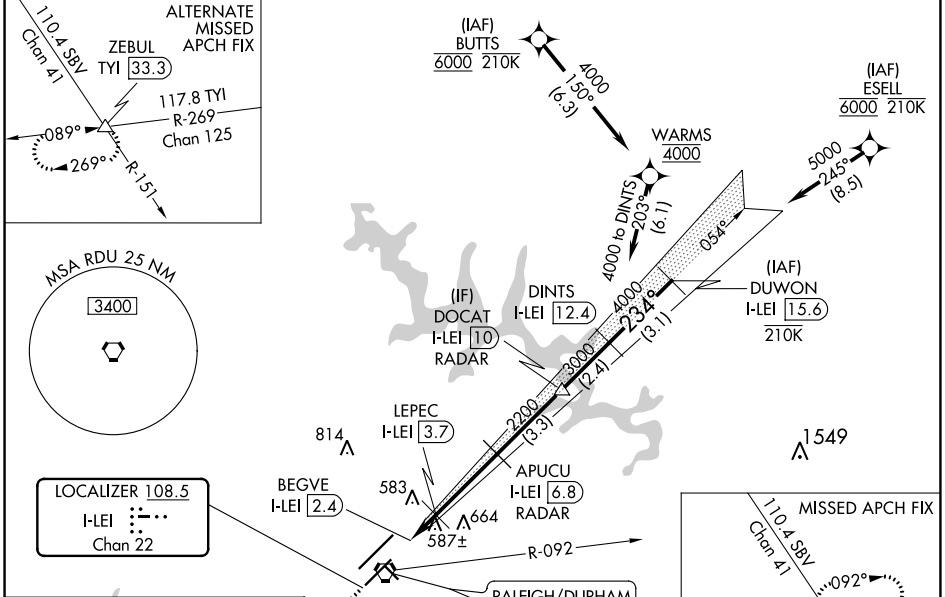
RNAV 1-DME/DME/IRU or GPS or RADAR required for procedure entry.
DME required for LOC only.



MISSED APPROACH: Climb to 1100 then climbing left turn to 2600 on heading 050° and RDU VORTAC R-092 to ZEBUL INT and hold.

⚠ Simultaneous approach authorized. For inop ALS, increase S-ILS 23L all Cats visibility to RVR 5500. Localizer unusable for coupled approaches below 1100 or within 2 NM of threshold.

D-ATIS 123.8	RALEIGH APP CON 127.675 307.9	(EAST) RALEIGH TOWER 127.45 257.8 Rwys 5R-23L and 14-32	(WEST) RALEIGH TOWER 119.3 257.8 Rwy 5L-23R	(EAST) GND CON 121.9 348.6 Rwys 5R-23L and 14-32	(WEST) GND CON 121.7 348.6 Rwy 5L-23R	CLNC DEL 120.1	CPDLC
------------------------	---	--	--	---	--	--------------------------	-------



ELEV 435	TDZE 435	REIL Rwy 32	MIRL Rwy 14-32	HIRL Rwys 5R-23L and 5L-23R	TDZ/CL Rwys 23R, 23L and 5L
1100	2600	RDU R-092	ZEBUL	Localizer unusable from 1 NM from threshold.	DUWON I-LEI 15.6
*LOC only.					
BEGVE I-LEI 2.4	LEPEC I-LEI 3.7	2200	APUCU I-LEI 6.8 RADAR	DOCAT I-LEI 10 RADAR	DINTS I-LEI 12.4
1200*	2200	3000	4000	5000	GS 3.00° TCH 56
1 NM — 1.3 NM — 3.1 NM — 3.3 NM — 2.4 NM — 3.1 NM					
CATEGORY	A	B	C	D	
S-ILS 23L		806/35	371 (400- $\frac{5}{8}$)		
S-LOC 23L		840/40	405 (500- $\frac{3}{4}$)		
C CIRCLING	960-1 $\frac{1}{4}$	525 (600-1 $\frac{1}{4}$)	1020-1 $\frac{1}{2}$ 585 (600-1 $\frac{1}{2}$)	1180-2 $\frac{1}{2}$ 745 (800-2 $\frac{1}{2}$)	

SE-2, 28 NOV 2024 to 26 DEC 2024

SE-2, 28 NOV 2024 to 26 DEC 2024