

# RALEIGH ONE DEPARTURE

D-ATIS  
123.8  
CLNC DEL  
120.1  
CPDLC  
RALEIGH DEP CON  
125.3 353.675 (055°-229°)  
132.35 256.9 (230°-054°)

**TOP ALTITUDE:  
AS ASSIGNED BY ATC**

NOTE: RADAR required.  
NOTE: Propeller aircraft only.

SOUTH BOSTON  
110.4 SBV  
Chan 41

FLAT ROCK  
113.3 FAK  
Chan 80

NORTH DEPARTURE  
132.35 256.9

GREENSBORO  
116.2 GSO  
Chan 109

TAR RIVER  
117.8 TYI  
Chan 125

SOUTH DEPARTURE  
125.3 353.675

LIBERTY  
113.0 LIB  
Chan 77

RALEIGH-DURHAM  
117.2 RDU  
Chan 119

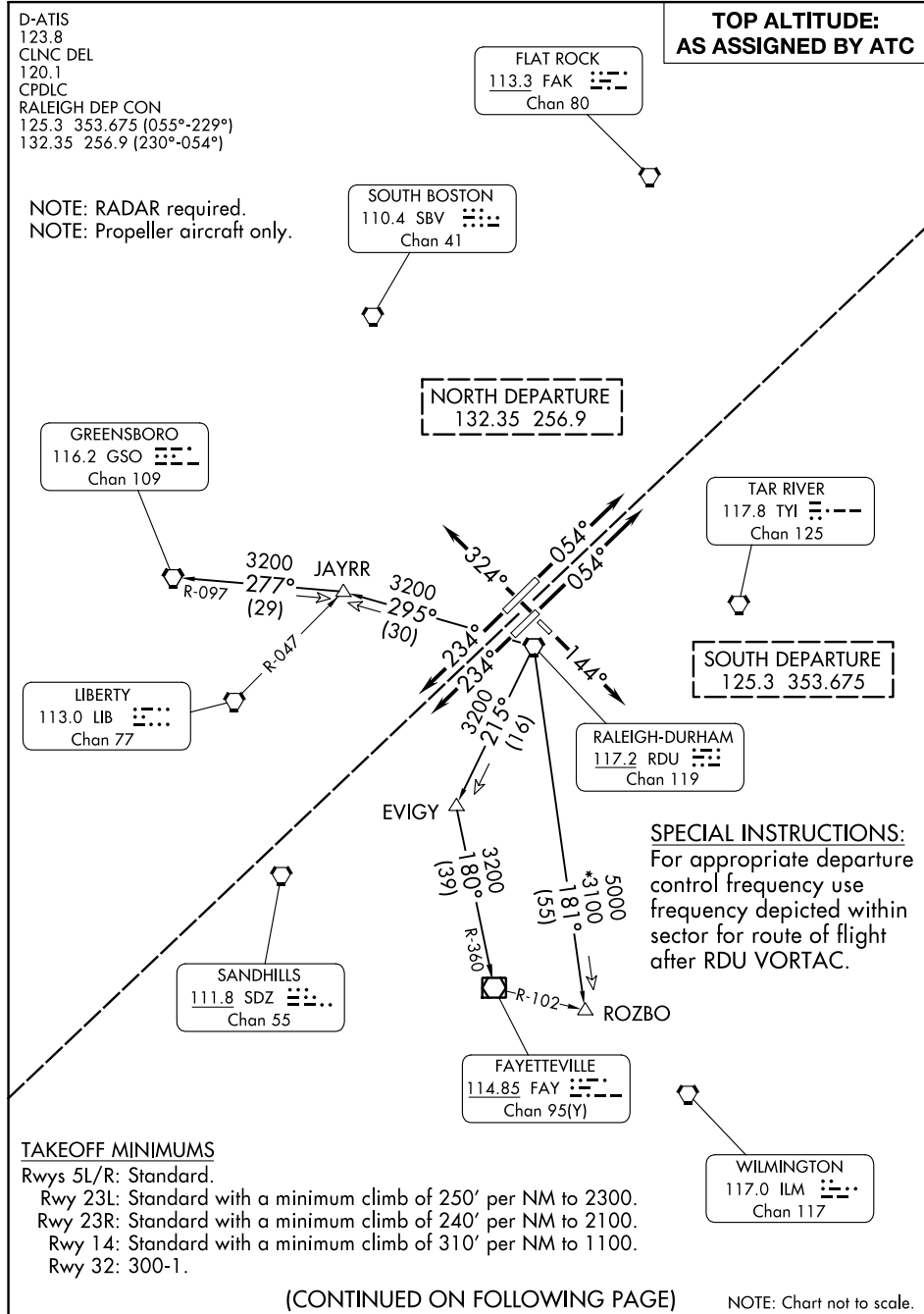
SANDHILLS  
111.8 SDZ  
Chan 55

FAYETTEVILLE  
114.85 FAY  
Chan 95(Y)

WILMINGTON  
117.0 ILM  
Chan 117

SE-2, 28 NOV 2024 to 26 DEC 2024

SE-2, 28 NOV 2024 to 26 DEC 2024



**TAKEOFF MINIMUMS**  
Rwys 5L/R: Standard.  
Rwy 23L: Standard with a minimum climb of 250' per NM to 2300.  
Rwy 23R: Standard with a minimum climb of 240' per NM to 2100.  
Rwy 14: Standard with a minimum climb of 310' per NM to 1100.  
Rwy 32: 300-1.

(CONTINUED ON FOLLOWING PAGE)

NOTE: Chart not to scale.

# RALEIGH ONE DEPARTURE



## DEPARTURE ROUTE DESCRIPTION

TAKEOFF RUNWAYS 5L/R: Climb on heading 054° or as assigned by ATC, thence. . . .

TAKEOFF RUNWAY 14: Climb on heading 144° or as assigned by ATC, thence. . . .

TAKEOFF RUNWAYS 23L/R: Climb on heading 234° or as assigned by ATC, thence. . . .

TAKEOFF RUNWAY 32: Climb on heading 324° or as assigned by ATC, thence. . . .

. . . .expect RADAR vectors to intercept filed/assigned transition or enroute fix/navaid/airway. Maintain altitude assigned by ATC, expect clearance to filed altitude/flight level 10 minutes after departure.

FAYETTEVILLE TRANSITION (RDU1.FAY): From over RDU VORTAC on RDU R-215 to EVIGY, then on FAY R-360 to FAY VOR/DME.

GREENSBORO TRANSITION (RDU1.GSO): From over RDU VORTAC on RDU R-295 to JAYRR, then on GSO R-097 to GSO VORTAC.

ROZBO TRANSITION (RDU1.ROZBO): From over RDU VORTAC on RDU R-181 to ROZBO.

SE-2, 28 NOV 2024 to 26 DEC 2024

SE-2, 28 NOV 2024 to 26 DEC 2024