

|             |          |              |
|-------------|----------|--------------|
| APP CRS     | Rwy Idg  | <b>10000</b> |
| <b>234°</b> | TDZE     | <b>409</b>   |
|             | Apt Elev | <b>435</b>   |

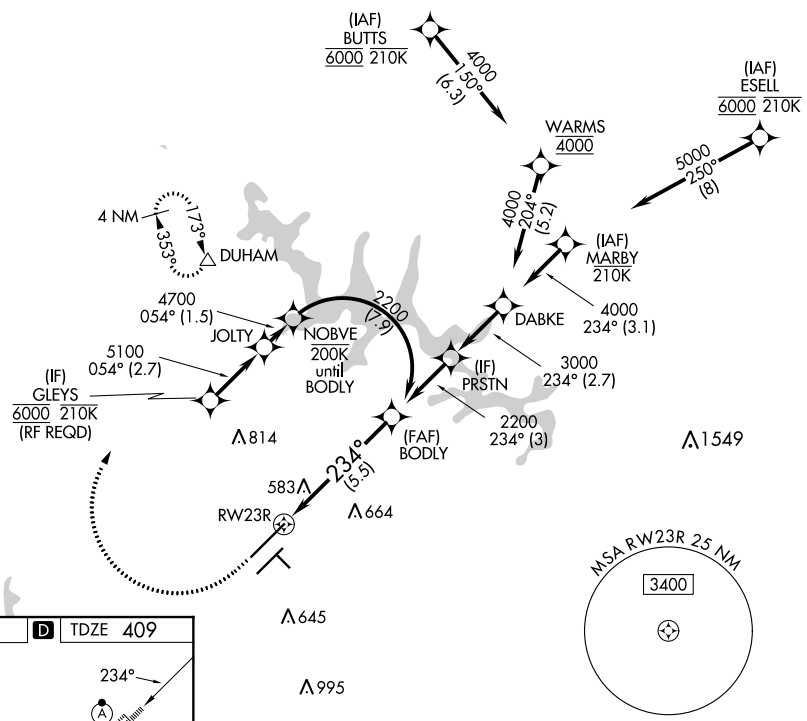
# RNAV (RNP) Z RWY 23R

RALEIGH-DURHAM INTL (RDU)

|   |                      |   |                                  |  |                                  |              |
|---|----------------------|---|----------------------------------|--|----------------------------------|--------------|
| RNP AR APCH-GPS.  |                      | ALSF-2  |                                  | MISSED APPROACH: Climb to 1000 then climbing right turn to 2200 direct DUHAM and hold. |                                  |              |
| <p>▼ For uncompensated Baro-VNAV systems, procedure NA below -12°C or above 54°C.<br/>For inop ALS, increase RNP 0.15 all Cats visibility to RVR 5500, increase RNP 0.30 all Cats visibility to 1½ SM. Simultaneous approach authorized except for arrivals at GLEYS.</p> |                      |   |                                  |  |                                  |              |
| D-ATIS  | RALEIGH APP CON      | (EAST) RALEIGH TOWER (WEST)                   | (EAST) GND CON                   | (WEST)   | CLNC DEL                         | CPDLC        |
| <b>123.8</b>  | <b>127.675 307.9</b> | <b>127.45 257.8</b><br>Rwys 5R-23L and 1-4-32 | <b>119.3 257.8</b><br>Rwy 5L-23R | <b>121.9 348.6</b><br>Rwys 5R-23L and 1-4-32   | <b>121.7 348.6</b><br>Rwy 5L-23R | <b>120.1</b> |

SE-2, 28 NOV 2024 to 26 DEC 2024

SE-2, 28 NOV 2024 to 26 DEC 2024



|          |          |          |
|----------|----------|----------|
| ELEV 435 | <b>D</b> | TDZE 409 |
|----------|----------|----------|

REIL Rwy 32  
MIRL Rwy 1-4-32  
HIRL Rwys 5R-23L and 5L-23R  
TDZ/CL Rwys 5L, 23L, and 23R

|   |      |                      |  |   |
|---|------|----------------------|--|---|
| 1000                                    | 2200 | DUHAM                | VGSI and RNAV glidepath not coincident (VGSI Angle 3.00°/TCH 69°). |   |
| See planview for multiple IF locations. |      |                      |  |   |
| RWY 23R                                 |      | BODLY 2200           |  |   |
| 5.5 NM                                  |      | 2200 GP 3.00° TCH 55 |  |   |
| CATEGORY                                | A    | B                    | C  | D |
| RNP 0.15 DA                             |      | 760/30               | 351 (400-%)  |   |
| RNP 0.30 DA                             |      | 910/55               | 501 (500-1)  |   |