

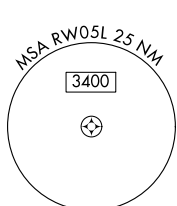
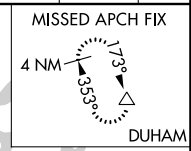
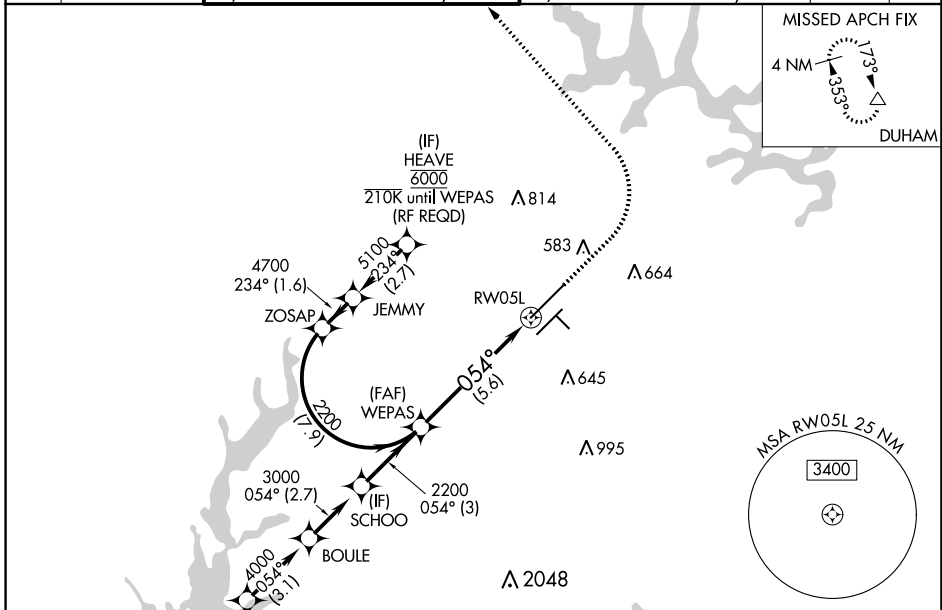
APP CRS	Rwy Idg	<b>10000</b>
<b>054°</b>	TDZE	<b>384</b>
	Apt Elev	<b>435</b>

# RNAV (RNP) Z RWY 5L

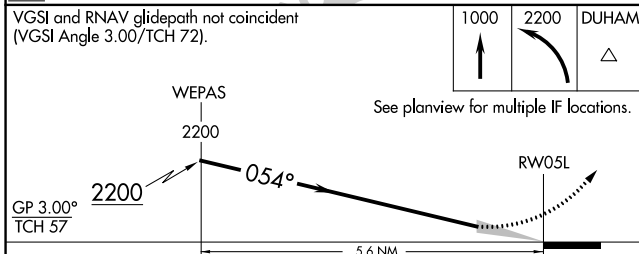
RALEIGH-DURHAM INTL (RDU)

RNP AR APCH-GPS.		MALSR	MISSED APPROACH: Climb to 1000 then climbing left turn to 2200 direct DUHAM and hold.
▼ For uncompensated Baro-VNAV systems, procedure NA below -1°C or above 54°C. Simultaneous approach authorized, except for arrivals at HEAVE. For inop ALS, increase RNP 0.10 all Cats visibility to RVR 4500.			

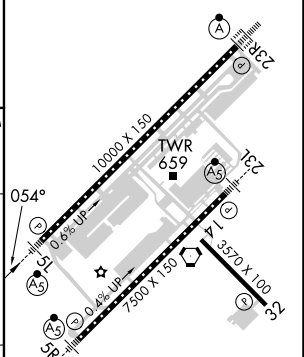
D-ATIS	RALEIGH APP CON	(EAST) RALEIGH TOWER (WEST)	(EAST) GND CON	(WEST)	CLNC DEL	CPDLC
<b>123.8</b>	<b>127.675 307.9</b>	<b>127.45 257.8</b> Rwys 5R-23L and 1-4-32	<b>119.3 257.8</b> Rwy 5L-23R	<b>121.9 348.6</b> Rwys 5R-23L and 1-4-32	<b>121.7 348.6</b> Rwy 5L-23R	<b>120.1</b>



(IAF) OTTOS  
 6000 210K  
 VGSI and RNAV glidepath not coincident  
 (VGSI Angle 3.00/TCH 72).



ELEV 435	<b>D</b> TDZE 384
----------	-------------------



CATEGORY	A	B	C	D
RNP 0.10 DA		684/24	300 (300-½)	
RNP 0.30 DA		780/35	396 (400-⅙)	

**AUTHORIZATION REQUIRED**

REIL Rwy 32  
 MIRL Rwy 1-4-32  
 HIRL Rwys 5R-23L and 5L-23R  
 TDZ/CL Rwys 5L, 23L, and 23R

SE-2, 28 NOV 2024 to 26 DEC 2024

SE-2, 28 NOV 2024 to 26 DEC 2024