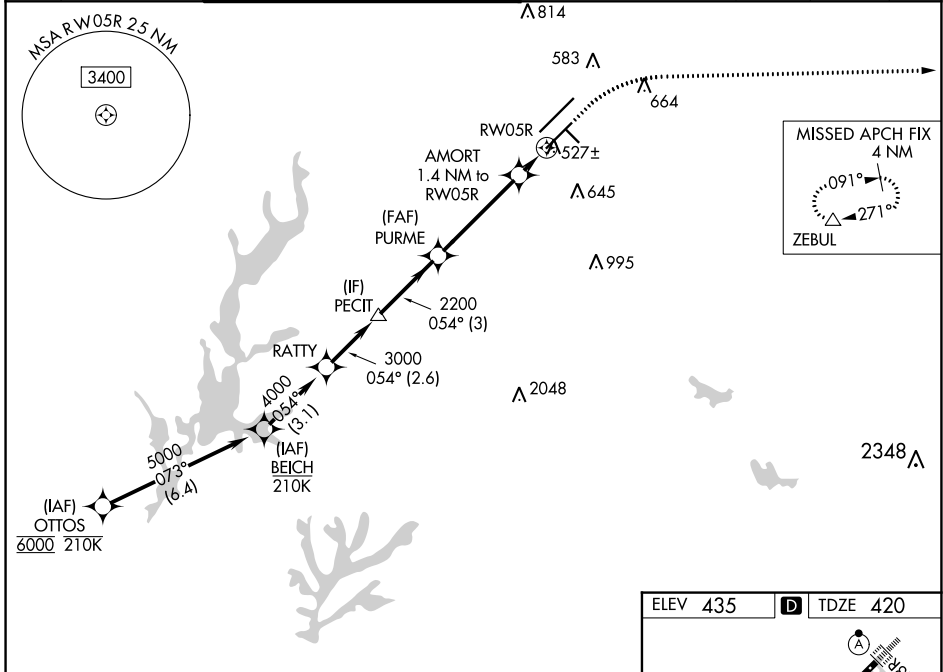


| | | |
|--|------------------------|---|
| WAAS CH 90213 W05B | APP CRS 054° | Rwy Idg 7500 TDZE 420 Apt Elev 435 |
|--|------------------------|---|

RNAV (GPS) Y RWY 5R

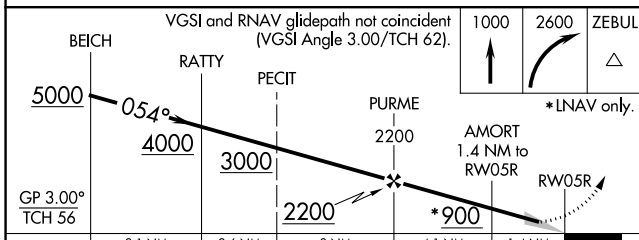
RALEIGH-DURHAM INTL (RDU)

| | | | | | | | |
|---|-----------------|--|--|---|--|--------------------------|-------|
| RNP APCH-GPS. | | MISSED APPROACH: Climb to 1000 then climbing right turn to 2600 direct ZEBUL and hold. | | | | | |
| Simultaneous approach authorized. LNAV procedure NA during simultaneous operations. For uncompensated Baro-VNAV systems, LNAV/VNAV NA below -12°C or above 54°C. Use of FD or AP required during simultaneous operations. For inop ALS, increase LNAV/VNAV all Cats visibility to RVR 4500 and LNAV Cats C/D visibility to RVR 5500. # RVR 1800 authorized with use of FD or AP or HUD to DA. | | MALSR | | | | | |
| D-ATIS | RALEIGH APP CON | (EAST) RALEIGH TOWER 127.45 257.8 Rwys 5R-23L and 14-32 | (WEST) RALEIGH TOWER 119.3 257.8 Rwy 5L-23R | (EAST) GND CON 121.9 348.6 Rwys 5R-23L and 14-32 | (WEST) GND CON 121.7 348.6 Rwy 5L-23R | CLNC DEL 120.1 | CPDLC |



SE-2, 28 NOV 2024 to 26 DEC 2024

SE-2, 28 NOV 2024 to 26 DEC 2024



| | | | | | | |
|--------------------|---------|-------------|-------------------------|-------------------------|------------------------------|-------|
| GP 3.00° TCH 56 | BEICH | RATTY | PECIT | PURME | AMORT 1.4 NM to RWY 5R | ZEBUL |
| | 5000 | 4000 | 3000 | 2200 | *900 | |
| | 3.1 NM | | 2.6 NM | | 3 NM | |
| CATEGORY | A | B | C | D | | |
| LPV DA | #620/24 | | 200 (200-½) | | | |
| LNAV/VNAV DA | 688/24 | | 268 (300-½) | | | |
| LNAV MDA | 780/24 | 360 (400-½) | 780/40 | 360 (400-¾) | | |
| CIRCLING | 960-1 | 525 (600-1) | 1020-1½ 585 (600-1½) | 1180-2½ 745 (800-2½) | | |

