

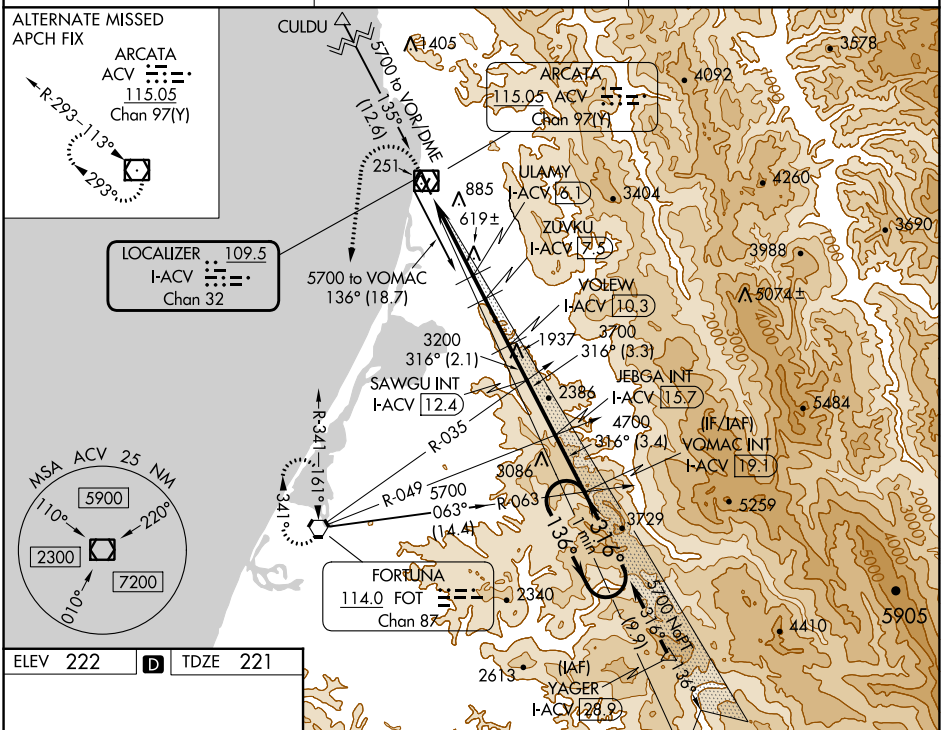
LOC/DME I-ACV 109.5 Chan 32	APP CRS 316°	Rwy Idg TDZE Apt Elev	5846 221 222
---	------------------------	-----------------------------	---

ILS or LOC RWY 32

CALIFORNIA REDWOOD COAST-HUMBOLDT COUNTY (ACV)

<p>NA Circling NA northeast of Rwy 14-32. DME required.</p>	<p>MALSR</p>	<p>MISSED APPROACH: Climb to 800 then climbing left turn to 3000 direct FOT VORTAC and hold.</p>
--	---------------------	--

<p>ASOS 118.525</p>	<p>SEATTLE CENTER 124.85 306.3</p>	<p>UNICOM 123.0 (CTAF)</p>
--------------------------------	---	---------------------------------------



ELEV 222 **D** TDZE 221

TDZ/CL Rwy 32 **1**
 MIRL Rwy 1-19 **1**
 HIRL Rwy 14-32 **1**
 REIL Rwy 14 **1**
 REIL Rwy 1 **1**

800 3000 FOT

Use I-ACV DME when on the localizer course.
VGSi and ILS glidepath not coincident (VGSi Angle 3.00/TCH 43).

VOMAC I-ACV 19.1 One Minute Holding Pattern

*LOC only

I-ACV 1.1
 *I-ACV 3
 ULAMY I-ACV 6.1
 ZUVKU I-ACV 7.5
 VOLEW I-ACV 10.3
 SAWGU I-ACV 12.4
 JEBGA I-ACV 15.7
 VOMAC I-ACV 19.1

1860* 2320* 3200 3700 4700 5700
 136° → ← 316°

GS 3.00° TCH 47

1.9 3.1 NM 1.4 NM 2.8 NM 2.1 NM 3.3 NM ← 3.4 NM

CATEGORY	A	B	C	D
S-ILS 32	441/18 220 (300-1/2)			
S-LOC 32	880/24	659 (700-1/2)	880-1 3/8 659 (700-1 3/8)	
C CIRCLING	880-1	658 (700-1)	880-1 7/8 658 (700-1 7/8)	880-2 658 (700-2)

SW-2, 28 NOV 2024 to 26 DEC 2024

SW-2, 28 NOV 2024 to 26 DEC 2024