

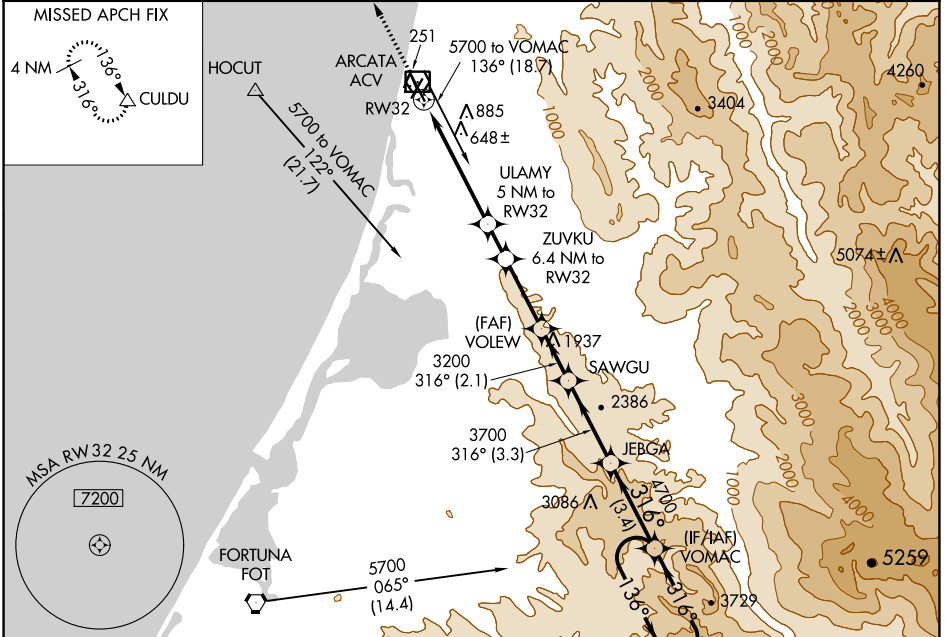
WAAS CH <b>63108</b> <b>W32A</b>	APP CRS <b>316°</b>	Rwy Idg TDZE <b>221</b> Apt Elev <b>222</b>	<b>5846</b>
--	------------------------	---	-------------

# RNAV (GPS) RWY 32

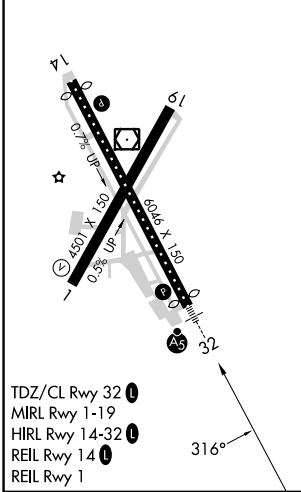
CALIFORNIA REDWOOD COAST-HUMBOLDT COUNTY (ACV)

<b>▽</b> Baro-VNAV NA. Circling NA northeast of Rwy 14-32. <b>▲</b> DME/DME RNP-0.3 NA.	<b>MALSR</b> 	<b>MISSED APPROACH:</b> Climb to 3000 direct CULDU and hold.
--	------------------	--

<b>ASOS</b> <b>118.525</b>	<b>SEATTLE CENTER</b> <b>124.85 306.3</b>	<b>UNICOM</b> <b>123.0 (CTAF)</b>
-------------------------------	--	--------------------------------------



ELEV 222	<b>D</b>	TDZE 221
----------	----------	----------



ARCATA/EUREKA, CALIFORNIA  
Amdt 2A 26APR18

3000 CULDU	VGS1 and RNAV glidepath not coincident (VGS1 Angle 3.00/TCH 43).				JEBGA	VOMAC	5 NM Holding Pattern
*LNAV only.	ULAMY 6.4 NM to RW32	ZUVKU 6.4 NM to RW32	VOLEW 3200	SAWGU	3700	4700	GP 3.00° TCH 47
*2 NM to RW32	1860*	2300*	3200	3.3 NM	3.4 NM		
2 NM	3 NM	1.4 NM	2.8 NM	2.1 NM	3.3 NM	3.4 NM	
CATEGORY	A		B		C		D
LPV DA			441/18		220 (300-½)		
LNAV/VNAV DA			1056-2½		835 (900-2½)		
LNAV MDA	900/24 679 (700-½)		900/40 679 (700-¾)		900-1½ 679 (700-1½)		
<b>C</b> CIRCLING	900-1 678 (700-1)				900-2 678 (700-2)		900-2¼ 678 (700-2¼)

CALIFORNIA REDWOOD COAST-HUMBOLDT COUNTY (ACV)  
40°59'N-124°07'W

# RNAV (GPS) RWY 32

SW-2, 28 NOV 2024 to 26 DEC 2024

SW-2, 28 NOV 2024 to 26 DEC 2024