

WAAS CH <b>97521</b> <b>W16A</b>	APP CRS <b>167°</b>	Rwy Idg TDZE Apt Elev	<b>5711</b> <b>1948</b> <b>1948</b>
--	------------------------	-----------------------------	---

# RNAV (GPS) RWY 16

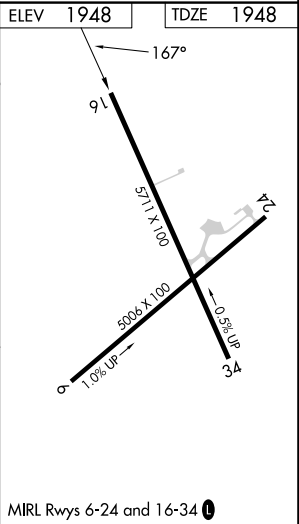
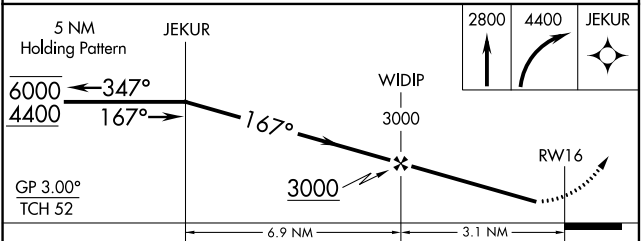
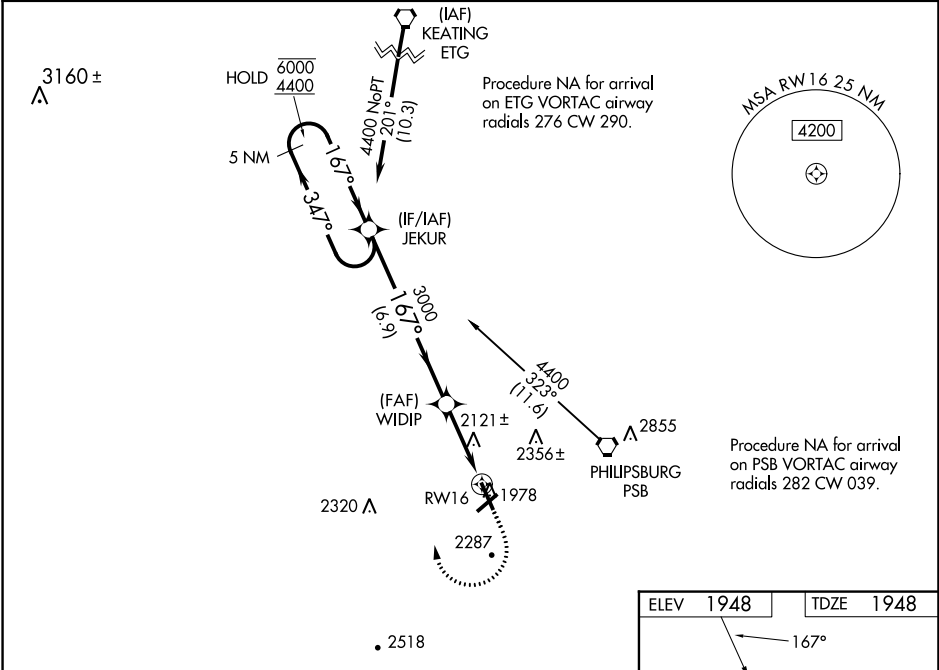
MID-STATE (PSB)

RNP APCH.

**⚠** Rwy 16 helicopter visibility reduction below 1 SM NA. Baro-VNAV NA.  
**⚠** NA Straight-in Rwy 16 NA at night, Circling Rwy 16, 24, NA at night.  
 Use State College altimeter setting, when not received use Clearfield altimeter setting. Circling NA for Cat D east of Rwy 16-34.

MISSED APPROACH: Climb to 2800 then climbing right turn to 4400 direct JEKUR and hold.

AWOS-3 <b>127.525</b>	UNV AWOS-3 <b>127.65</b>	NEW YORK CENTER <b>134.8 338.3</b>	CTAF <b>122.9</b>
--------------------------	-----------------------------	---------------------------------------	----------------------



CATEGORY	A	B	C	D
LPV DA	2323-1 375 (400-1)			
LNAV/VNAV DA	2332-1½ 384 (400-1½)			
LNAV MDA	2520-1	572 (600-1)	2520-1½	572 (600-1½)
CIRCLING	2680-1 732 (800-1)	2840-1¼ 892 (900-1¼)	2880-2¾ 932 (1000-2¾)	3000-3 1052 (1100-3)

NE-4, 28 NOV 2024 to 26 DEC 2024

NE-4, 28 NOV 2024 to 26 DEC 2024