

| | | | |
|--|------------------------|-----------------------------|---|
| WAAS CH 56530 W08A | APP CRS 076° | Rwy Idg TDZE Apt Elev | 3953 3942 3942 |
|--|------------------------|-----------------------------|---|

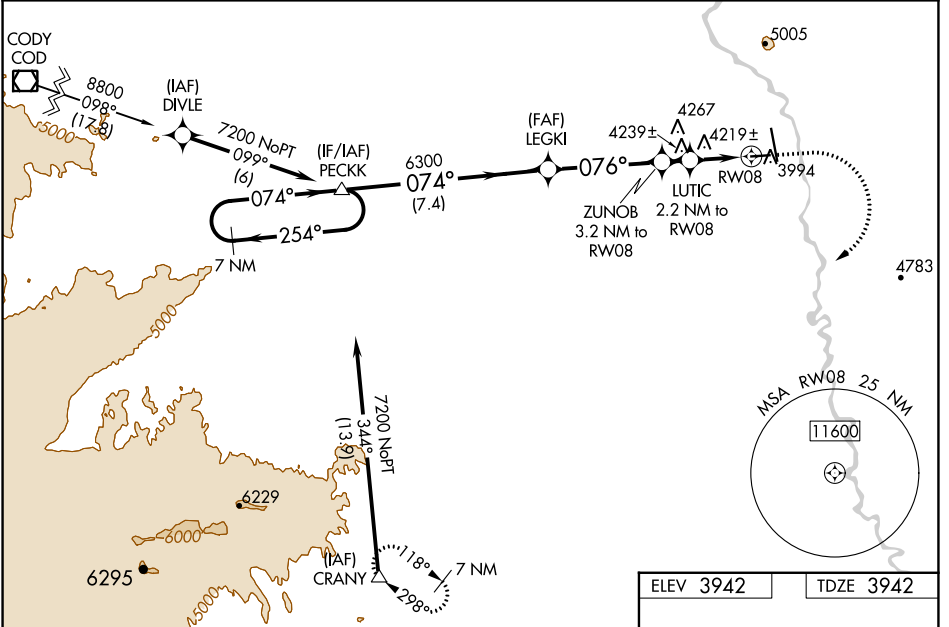
RNAV (GPS) RWY 8

SOUTH BIG HORN COUNTY (GEY)

⚠ DME/DME RNP-0.3 NA. Straight-in minimums NA at night. When local altimeter setting not received use Cowley/Lovell/Byron altimeter setting: increase LPV DA to 4279 feet and LNAV/VNAV DA to 4654 feet. Increase LPV visibility, all Cats 1/2 SM; increase all MDA 100 feet and LNAV Cats C/D visibility 1/4 SM. Rwy 8 helicopter visibility reduction below 3/4 SM NA. Baro-VNAV and VDP NA when using Cowley/Lovell/Byron altimeter setting. For uncompensated Baro-VNAV systems, LNAV/VNAV NA below -26°C (-14°F) or above 51°C (124°F).

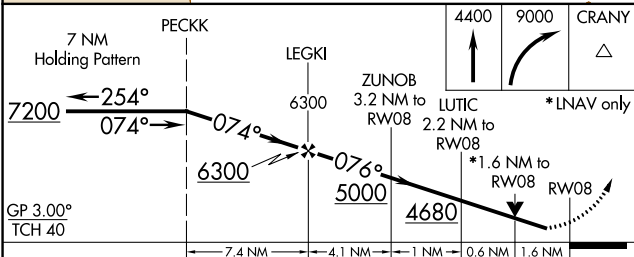
MISSED APPROACH: Climb to 4400 then climbing right turn to 9000 direct CRANY and hold, continue climb-in-hold to 9000.

| | | |
|------------------------|---|----------------------|
| ASOS 135.325 | SALT LAKE CENTER 127.75 351.9 | CTAF 122.9 |
|------------------------|---|----------------------|



NW-1, 28 NOV 2024 to 26 DEC 2024

NW-1, 28 NOV 2024 to 26 DEC 2024



| | |
|-----------|-----------|
| ELEV 3942 | TDZE 3942 |
|-----------|-----------|

| CATEGORY | A | B | C | D |
|-------------------|----------------------------|-----------------------|----------------------------|-------------------------|
| LPV DA | 4192-1 250 (300-1) | | | |
| LNAV/VNAV DA | 4567-2 1/2 625 (700-2 1/2) | | | |
| LNAV MDA | 4480-1 538 (600-1) | | 4480-1 1/2 538 (600-1 1/2) | |
| C CIRCLING | 4680-1 738 (800-1) | 4700-1 758 (800-1) | 5320-3 1378 (1400-3) | 5460-3 1518 (1600-3) |

