


LOC/DME I-HTS <b>109.9</b> Chan 36	APP CRS <b>118°</b>	Rwy Idg <b>6516</b> TDZE <b>828</b> Apt Elev <b>828</b>
--	------------------------	---

# ILS or LOC RWY 12

TRI-STATE/MILTON J FERGUSON FLD (HTS)

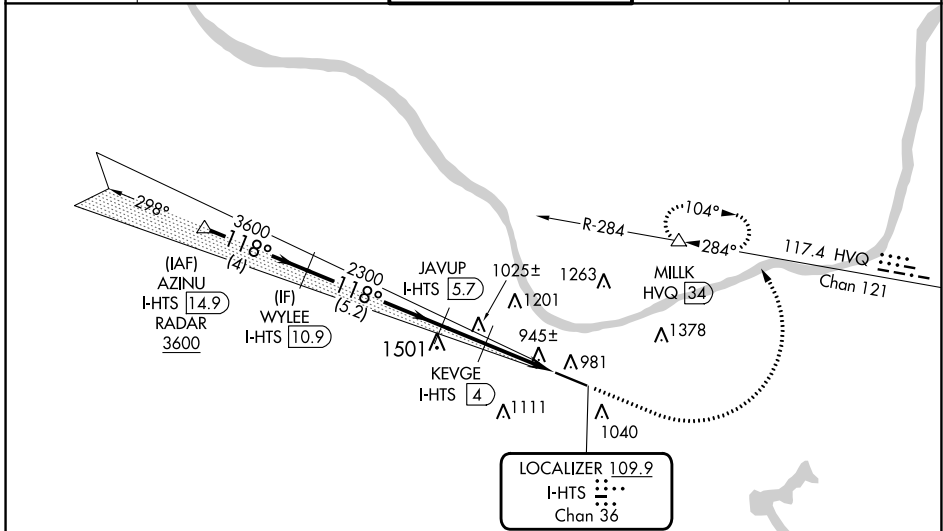
DME required. RADAR required for procedure entry.

**MALS**  


**MISSED APPROACH:** Climb to 2800 then climbing left turn to 4000 on heading 005° and HVQ VOR/DME R-284 to MILK/HVQ VOR/DME 34 DME and hold, continue to climb-in-hold to 4000.

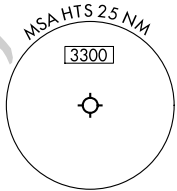
**Warnings:**  
 For inop ALS, increase S-LOC 12 Cats C and D visibility to RVR 5500.  
 \*RVR 1800 authorized with use of FD or AP or HUD to DA.

ATIS <b>125.2</b>	HUNTINGTON APP CON <b>119.75 270.1</b>	HUNTINGTON TOWER <b>118.5 270.1</b>	GND CON <b>121.9</b>	CLNC DEL <b>118.05</b>
----------------------	---	--	-------------------------	---------------------------

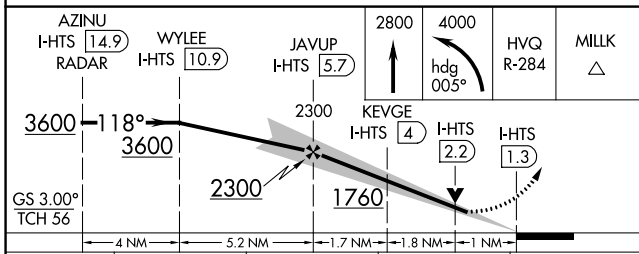


NE-4, 28 NOV 2024 to 26 DEC 2024

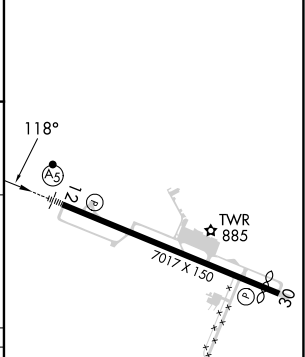
NE-4, 28 NOV 2024 to 26 DEC 2024



**CAUTION:** Fuel burning stacks 2 miles west of Rwy 12 may be mistaken for MALS.



ELEV 828	<b>D</b>	TDZE 828
----------	----------	----------



CATEGORY	A	B	C	D
S-ILS 12*	1028/24 200 (200-½)			
S-LOC 12	1200/24	372 (400-½)	1200/35	372 (400-⅝)
<b>C</b> CIRCLING	1300-1 472 (500-1)	1380-1 552 (600-1)	1520-2 692 (700-2)	1740-3 912 (1000-2)

REIL Rwy 30  
HIRL Rwy 12-30