

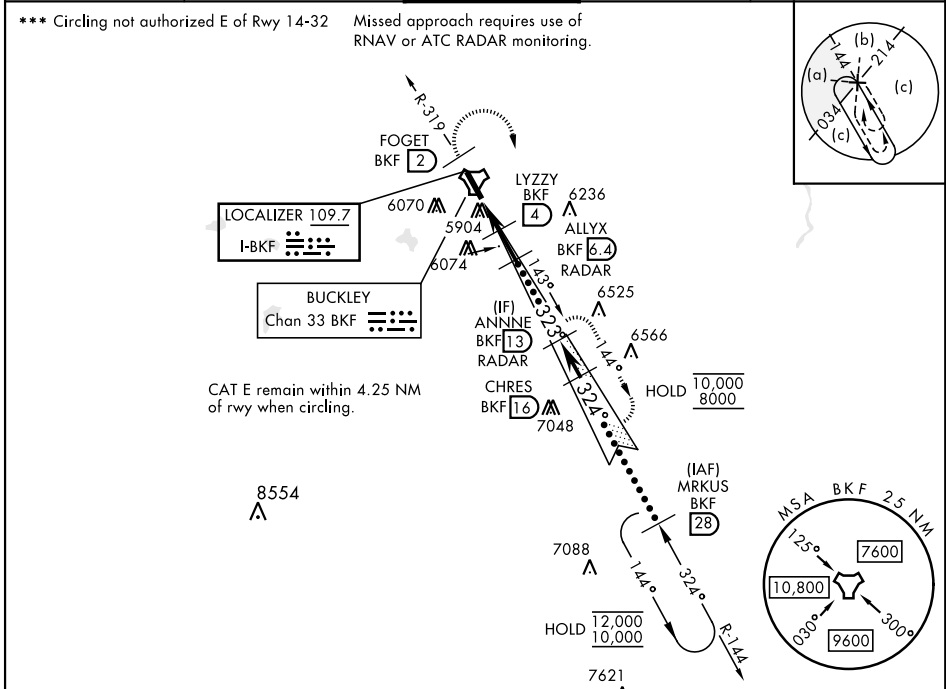
# HI-ILS or LOC/DME RWY 32

LOC I-BKF <b>109.7</b>	APCH CRS <b>323°</b>	Rwy Idg <b>11,006</b> TDZE <b>5663</b> Arprt Elev <b>5663</b>	AL-538 [USAF]	BUCKLEY SFB (KBKF)
---------------------------	-------------------------	---	---------------	--------------------

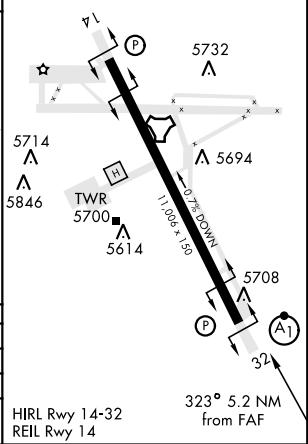
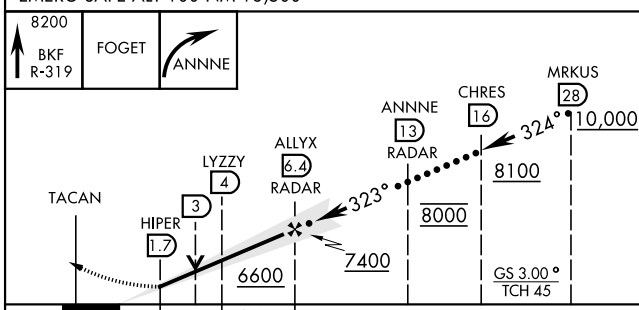
\* When ALS inop, increase CAT CDE RVR to 40 and vis to 3/4 miles.  
 \*\* When ALS inop, increase CAT CDE vis to 1 1/4 miles.

MISSED APPROACH: Climb on BKF TACAN R-319 to FOGET, then climbing right turn to 8200 and intercept BKF R-144 to ANNNE and hold or as directed by ATC.

ATIS ★ <b>119.675 259.3</b>	DENVER APP CON <b>128.45 251.075</b>	TOWER ★ <b>121.0 291.675</b>	GND CON <b>121.6 275.8</b>	CLNC DEL <b>121.6 275.8</b>
--------------------------------	---	---------------------------------	-------------------------------	--------------------------------



EMERG SAFE ALT 100 NM 16,500	ELEV 5663	TDZE 5663
------------------------------	-----------	-----------



CATEGORY	C	D	E
S-ILS 32*	5863/24	200	(200-1/2)
S-LOC 32**	6280-1 3/8	617	(700-1 3/8)
CIRCLING ***	6360-2 697 (700-2)	6400-2 1/4 737 (800-2 1/4)	6420-2 3/4 757 (800-2 3/4)

HIRL Rwy 14-32  
 REIL Rwy 14

# HI-ILS or LOC/DME RWY 32



SW-1, 28 NOV 2024 to 26 DEC 2024

SW-1, 28 NOV 2024 to 26 DEC 2024