

HI-TACAN RWY 32

TACAN BKF Chan 33	APCH CRS 328°	Rwy Idg 11,006 TDZE 5663 Arprt Elev 5663
-----------------------------	-------------------------	---

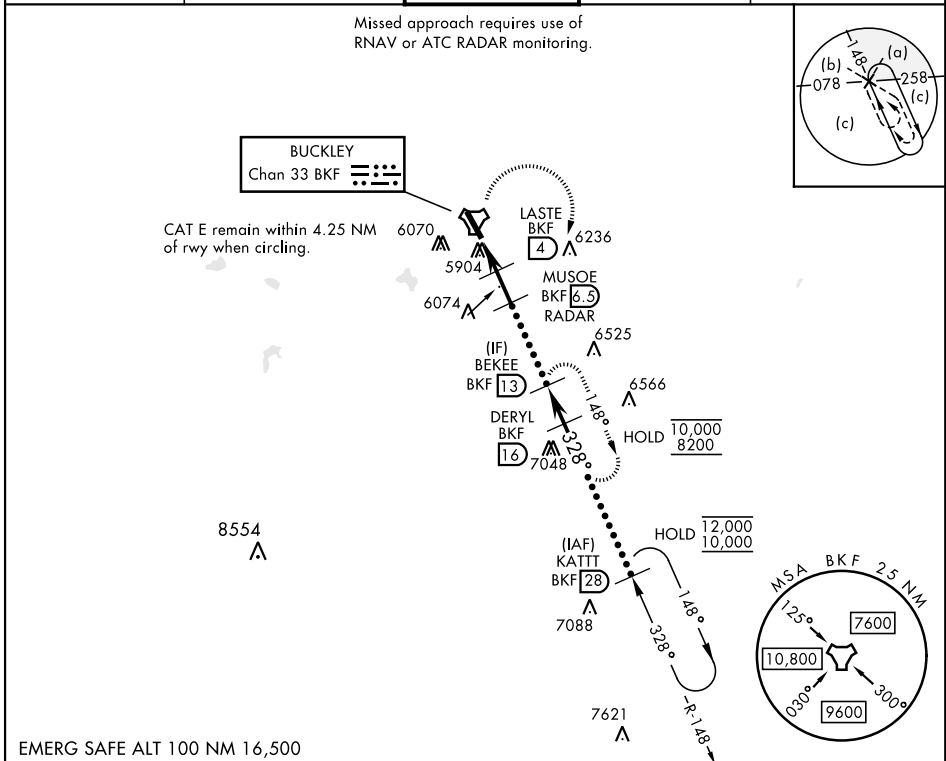
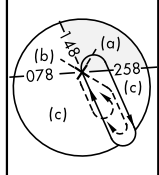
AL-538 [USAF]

BUCKLEY SFB (KBKF)

▼ * When ALS inop, increase CAT CDE vis to 1¼ miles. ** Circling NA East of Rwy 14-32.	ALS F-1 (A1)	MISSED APPROACH: Climbing right turn to 8200 and intercept BKF TACAN R-148 direct BEKEE and hold or as directed by ATC.
---	------------------------	---

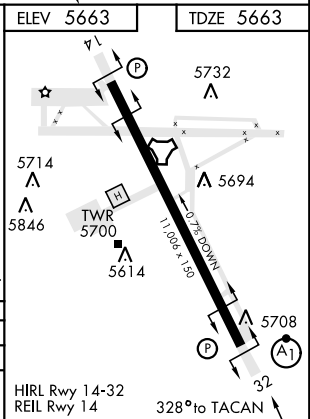
ATIS ★ 119.675 259.3	DENVER APP CON 128.45 251.075	TOWER ★ 121.0 291.675	GND CON 121.6 275.8	CLNC DEL 121.6 275.8
--------------------------------	---	---------------------------------	-------------------------------	--------------------------------

Missed approach requires use of RNAV or ATC RADAR monitoring.



EMERG SAFE ALT 100 NM 16,500

8200 BKF R-148	BEKEE BKF 13	DERYL 16	KATTT 28	ELEV 5663	TDZE 5663
TACAN CENAR 1.7		LASTE 4	MUSOE 6.5	BEKEE 13	DERYL 16
6600		7400	8000	8100	10,000
0.5		2.3 NM		2.5 NM	
CATEGORY	C	D	E		
S-32 *	6280-1⅜ 617 (700-1⅜)				
CIRCLING **	6360-2 697 (700-2)	6400-2¼ 737 (800-2¼)	6420-2¾ 757 (800-2¾)		



HI-TACAN RWY 32

SW-1, 28 NOV 2024 to 26 DEC 2024

SW-1, 28 NOV 2024 to 26 DEC 2024