

WAAS CH <b>65631</b> <b>W13A</b>	APP CRS <b>136°</b>	Rwy Idg <b>4498</b> TDZE <b>2130</b> Apt Elev <b>2131</b>
----------------------------------------	------------------------	-----------------------------------------------------------------

# RNAV (GPS) RWY 13

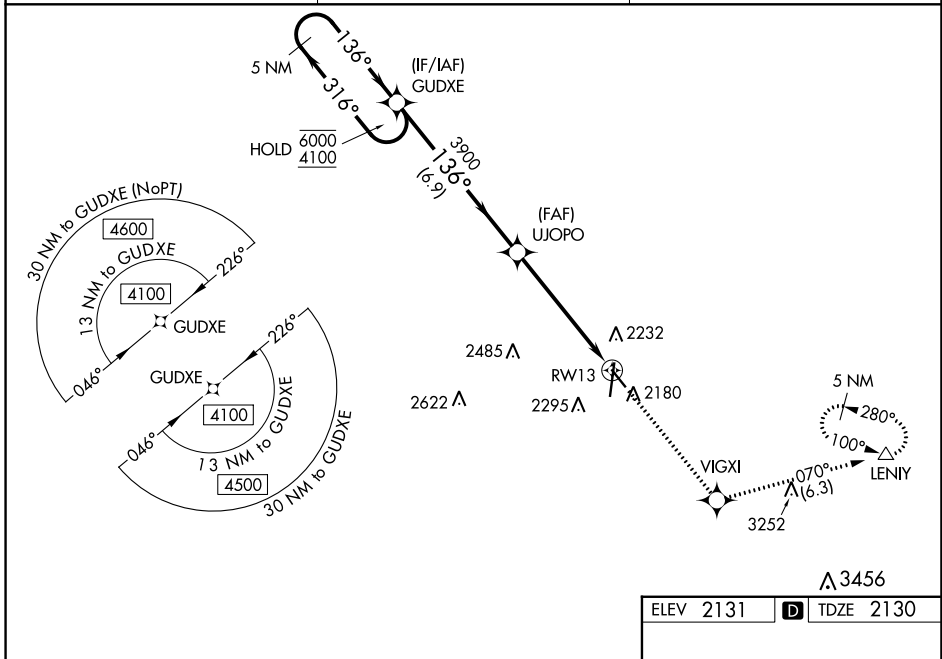
KEARNEY RGNL (E.A.R.)

RNP APCH.

**⚠** Baro-VNAV and VDP NA when using Holdrege altimeter setting. For uncompensated Baro-VNAV systems, LNAV/VNAV NA below -23°C or above 54°C. When local altimeter setting not received, use Holdrege altimeter setting: increase LPV DA to 2407 feet and all Cats visibility  $\frac{1}{8}$  SM; increase LNAV/VNAV DA to 2457 feet and all Cats visibility  $\frac{3}{8}$  SM and all MDAs 80 feet; increase visibility LNAV and Circling Cat C  $\frac{1}{8}$  SM.

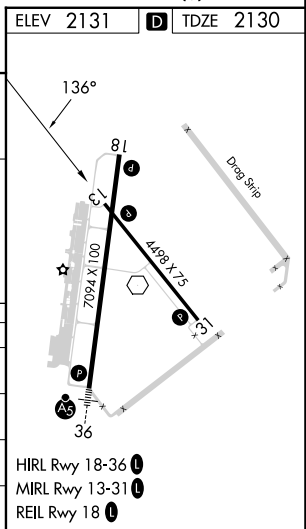
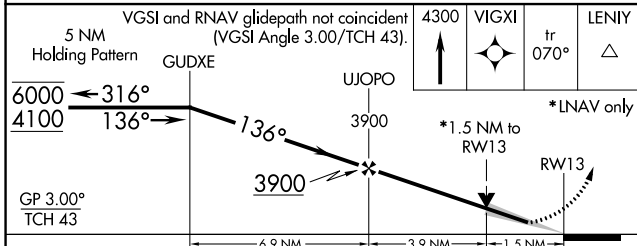
MISSED APPROACH: Climb to 4300 direct VIGXI and on track 070° to LENIY and hold.

AWOS-3PT <b>123.875</b>	MINNEAPOLIS CENTER <b>119.4 278.8</b>	UNICOM <b>123.0 (CTAF) 1</b>
----------------------------	------------------------------------------	---------------------------------



NC-2, 28 NOV 2024 to 26 DEC 2024

NC-2, 28 NOV 2024 to 26 DEC 2024



CATEGORY	A	B	C	D
LPV DA	2330- $\frac{3}{4}$	200 (200- $\frac{3}{4}$ )		NA
LNAV/VNAV DA	2380- $\frac{3}{4}$	250 (300- $\frac{3}{4}$ )		NA
LNAV MDA	2720-1	590 (600-1)	2720-1 $\frac{3}{4}$ 590 (600-1 $\frac{3}{4}$ )	NA
<b>C</b> CIRCLING	2720-1	589 (600-1)	2720-1 $\frac{3}{4}$ 589 (600-1 $\frac{3}{4}$ )	NA