

HI-ILS or LOC Z RWY 31

LOC I-OFF 109.5	APCH CRS 307°	Rwy ldg 10,612 TDZE 991 Arprt Elev 1048
---------------------------	-------------------------	--

[USAF]

OFFUTT AFB (KOFF)

RADAR or DME required

- ▼ * When ALS inop, increase CAT CDE RVR to 40 and vis to ¾ mile.
- ** When ALS inop, increase CAT CDE RVR to 55 and vis to 1 mile.
- *** Circling not authorized N of Rwy 13-31.

ALSF-1

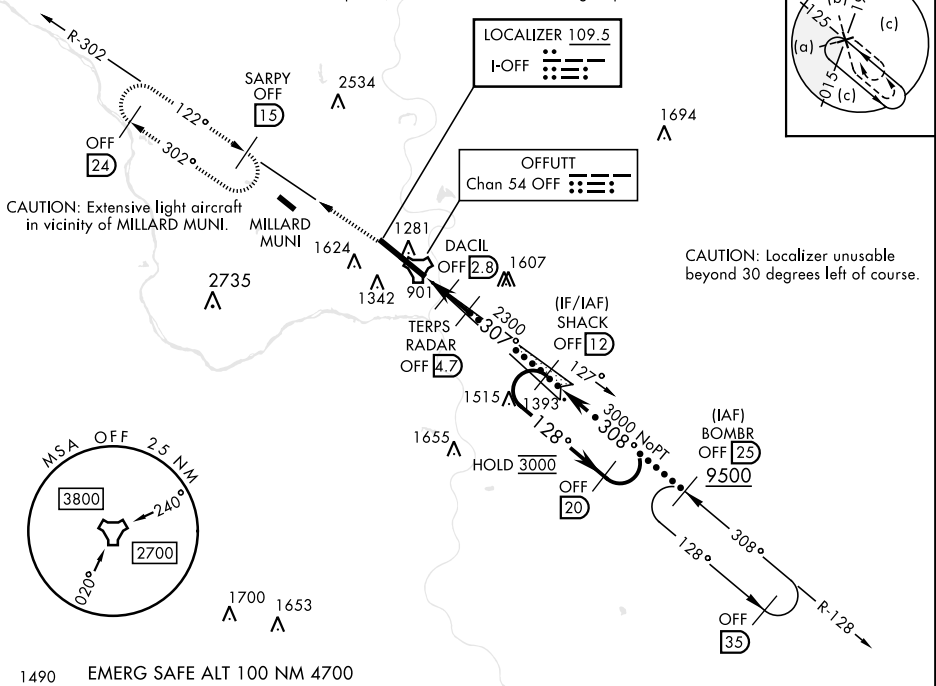


MISSED APPROACH: Climb to 3000 via OFF TACAN R-302 to SARPY and hold.

ATIS 126.025 273.5	OMAHA APP CON 124.5 263.0 (E) 120.1 354.05 (W)	TOWER 123.7 279.625	GND CON 121.7 289.4
------------------------------	--	-------------------------------	-------------------------------

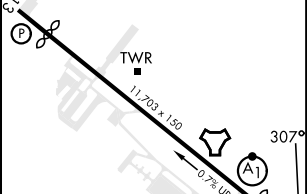
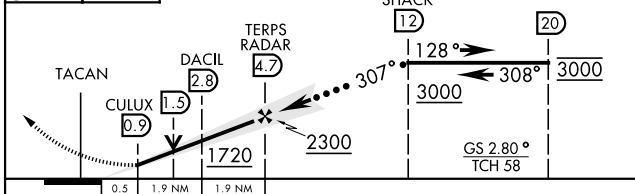
RVR 1800 authorized with use of FD or AP or HUD to DA.

CAUTION: When circling to Rwy 13 at night, operational VGSI required, remain on or above VGSI glidepath until threshold.



3000 OFF R-302	SARPY OFF (15)
----------------	----------------

ELEV 1048	TDZE 991
Rwy 13 ldg 10,695' Rwy 31 ldg 10,612'	



CATEGORY	C	D	E
S-ILS 31*	1192/24	200	(200-½)
S-LOC 31**	1360/35	368	(400-¾)
*** CIRCLING	1660-1¾ 612 (700-1¾)	1940-3	892 (900-3)

HIRL Rwy 13-31	Rwy 13-31 ALS nstd
FAF to MAP 3.8 NM	
Knots	120 140 160 180 200
Min:Sec	1:54 1:38 1:26 1:16 1:08

HI-ILS or LOC Z RWY 31

NC-2, 28 NOV 2024 to 26 DEC 2024

NC-2, 28 NOV 2024 to 26 DEC 2024