

HI-TACAN Z RWY 31

TACAN OFF Chan 54	APCH CRS 316°	Rwy ldg 10,612 TDZE 991 Arprt Elev 1048
-----------------------------	-------------------------	--

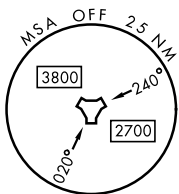
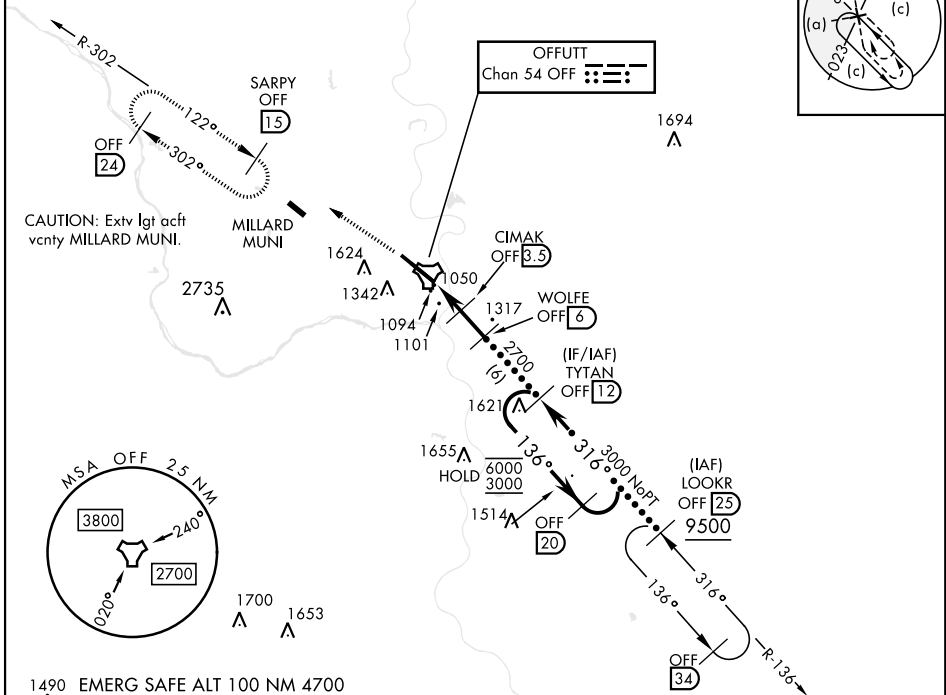
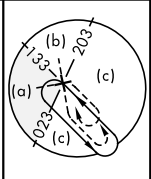
[USAF]

OFFUTT AFB (KOFF)

<p>▼ *When ALS inop, increase CAT CDE RVR to 55, vis to 1 mile. **Circling not authorized N of Rwy 13-31.</p>	<p>ALSF-1 A1</p>	<p>MISSED APPROACH: Climb to 3000 via OFF TACAN R-302 to SARPY and hold.</p>
---	----------------------	--

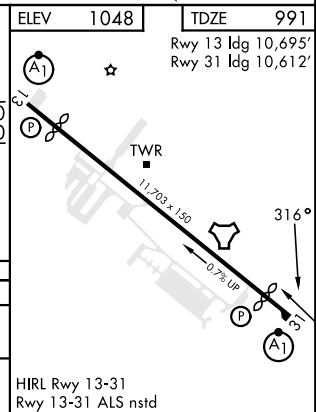
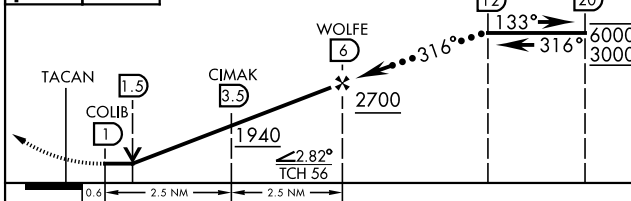
<p>ATIS 126.025 273.5</p>	<p>OMAHA APP CON 124.5 263.0 (E) 120.1 354.05 (W)</p>	<p>TOWER 123.7 279.625</p>	<p>GND CON 121.7 289.4</p>
--------------------------------------	---	---------------------------------------	---------------------------------------

CAUTION: When circling to Rwy 13 at night, operational VGSI required, remain on or above VGSI glidepath until threshold.



1490 EMERG SAFE ALT 100 NM 4700

<p>3000 OFF R-302</p> <p>SARPY OFF 15</p>	<p>ELEV 1048</p> <p>TDZE 991</p> <p>Rwy 13 ldg 10,695'</p> <p>Rwy 31 ldg 10,612'</p>
---	--



CATEGORY	C	D	E
S-31*	1360/40	368	(400-¾)
CIRCLING**	1660-¾ 612 (700-1¾)	1940-3	892 (900-3)

HIRL Rwy 13-31
Rwy 13-31 ALS nstd

HI-TACAN Z RWY 31

NC-2, 28 NOV 2024 to 26 DEC 2024

NC-2, 28 NOV 2024 to 26 DEC 2024