

OMAHA, NEBRASKA

ILS or LOC RWY 13

LOC I-ATB 111.7	APCH CRS 127°	Rwy ldg 10,695 TDZE 1048 Arprt Elev 1048
---------------------------	-------------------------	---------------------------------------------------------------------

[USAF]

OFFUTT AFB (KOFF)

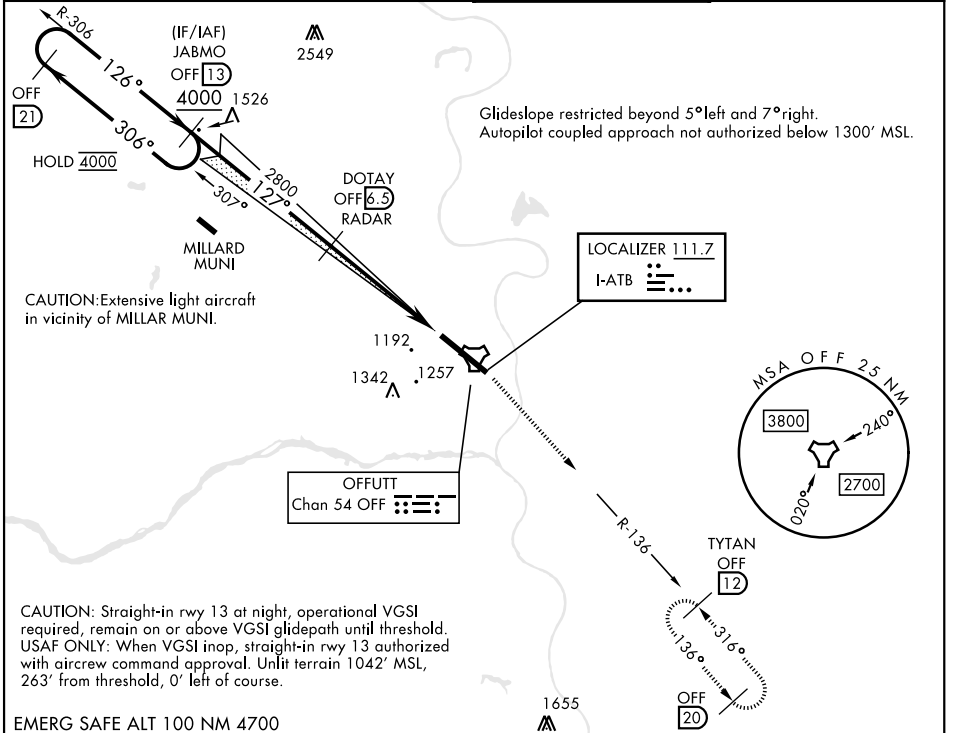
RADAR or DME required



MISSED APPROACH: Climb to 3000 via OFF TACAN R-136 to TYTAN and hold.

▼ * When ALS inop, increase CAT AB RVR to 55, vis to 1 mile; CAT CDE vis to 1/8 miles.
 ** Circling not authorized N of Rwy 13-31.

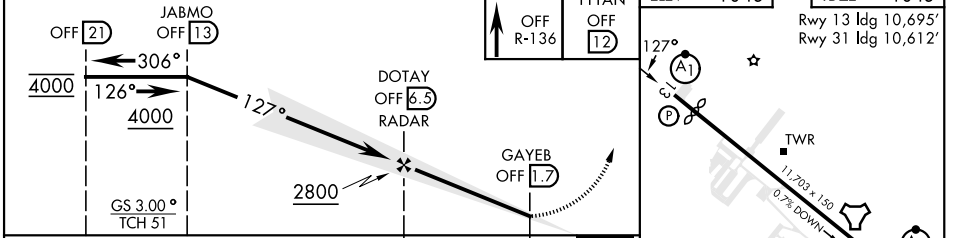
ATIS 126.025 273.5	OMAHA APP CON 120.1 354.05 (W) 124.5 263.0 (E)	TOWER 123.7 279.625	GND CON 121.7 289.4
------------------------------	--------------------------------------------------------------------	-------------------------------	-------------------------------



NC-2, 28 NOV 2024 to 26 DEC 2024

NC-2, 28 NOV 2024 to 26 DEC 2024

EMERG SAFE ALT 100 NM 4700



CATEGORY	A	B	C	D	E	ELEV 1048	TDZE 1048
S-ILS 13	1298/50		250	(300-1)		Rwy 13 ldg 10,695' Rwy 31 ldg 10,612'	
S-LOC 13*	1560/50	512 (600-1)	1560/55	512	(600-1)	HIRL Rwy 13-31 Rwy 13-31 ALS nstd	
FAF to MAP 4.9 NM							
CIRCLING**	1560-1	512 (600-1)	1660-1 3/4	1940-3	892	180	1:38
			612 (700-13/4)	(900-3)		158	1:38
Knots		60	90	120	150	180	
Min:Sec		4:54	3:16	2:27	1:58	1:38	

OMAHA, NEBRASKA

41° 07' N-95° 54' W

OFFUTT AFB (KOFF)

Amdt 1 18APR24

ILS or LOC RWY 13