

TACAN Y RWY 31

TACAN OFF Chan 54	APCH CRS 316°	Rwy ldg 10,612 TDZE 991 Arprt Elev 1048
-----------------------------	-------------------------	--

[USAF]

OFFUTT AFB (KOFF)

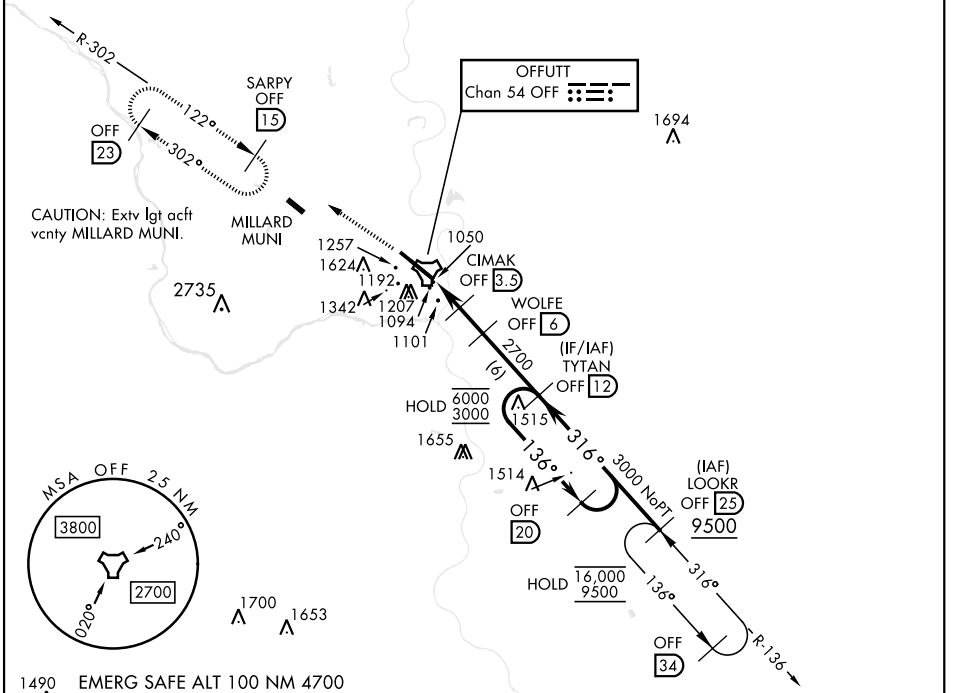
▼ * When ALS inop, increase RVR to 55, vis to 1 mile.
 ** Circling not authorized N of Rwy 13-31.



MISSED APPROACH: Climb to 3000 via
 OFF TACAN R-302 to SARPY and hold.

ATIS 126.025 273.5	OMAHA APP CON 120.1 354.05 (W) 124.5 263.0 (E)	TOWER 123.7 279.625	GND CON 121.7 289.4
------------------------------	--	-------------------------------	-------------------------------

CAUTION: When circling to Rwy 13 at night, operational VGSI required, remain on or above VGSI glidepath until threshold.



NC-2, 28 NOV 2024 to 26 DEC 2024

NC-2, 28 NOV 2024 to 26 DEC 2024

3000 OFF R-302	SARPY OFF (15)	ELEV 1048	TDZE 991																		
<table border="1"> <thead> <tr> <th>CATEGORY</th> <th>A</th> <th>B</th> <th>C</th> <th>D</th> <th>E</th> </tr> </thead> <tbody> <tr> <td>S-31*</td> <td>1360/24</td> <td>368 (400-½)</td> <td>1360/40</td> <td>368 (400-¾)</td> <td></td> </tr> <tr> <td>CIRCLING**</td> <td>1500-1 452 (500-1)</td> <td>1560-1 512 (600-1)</td> <td>1660-1¾ 612 (700-1¾)</td> <td>1940-3</td> <td>892 (900-3)</td> </tr> </tbody> </table>	CATEGORY	A	B	C	D	E	S-31*	1360/24	368 (400-½)	1360/40	368 (400-¾)		CIRCLING**	1500-1 452 (500-1)	1560-1 512 (600-1)	1660-1¾ 612 (700-1¾)	1940-3	892 (900-3)	HIRL Rwy 13-31 Rwy 13-31 ALS nstd		
CATEGORY	A	B	C	D	E																
S-31*	1360/24	368 (400-½)	1360/40	368 (400-¾)																	
CIRCLING**	1500-1 452 (500-1)	1560-1 512 (600-1)	1660-1¾ 612 (700-1¾)	1940-3	892 (900-3)																

TACAN Y RWY 31