

RNAV (RNP) Z RWY 13R

PALM SPRINGS INTL (PSP)

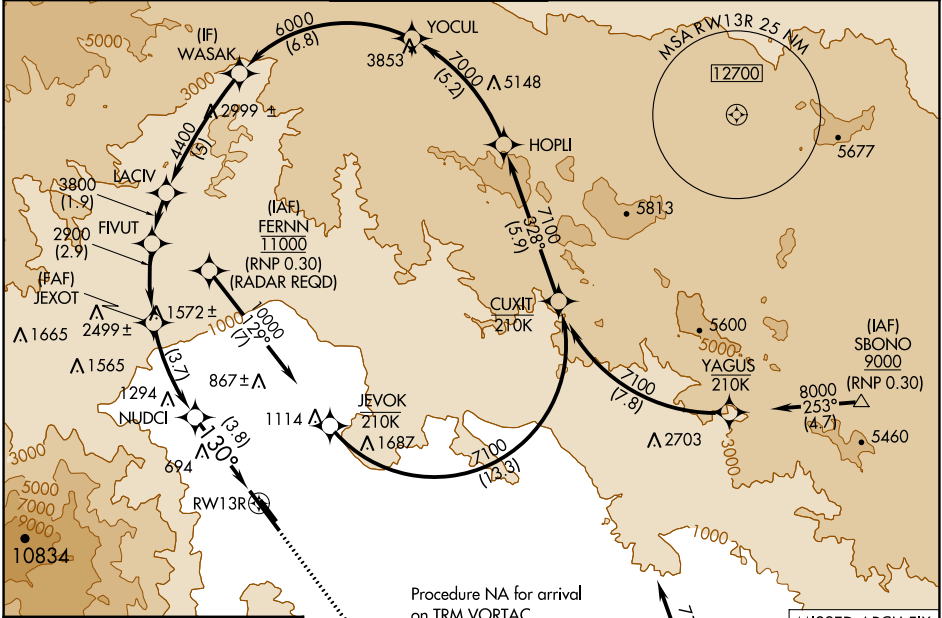
APP CRS	Rwy Idg	6857
130°	TDZE	451
	Apt Elev	476

RNP AR APCH, RF required.

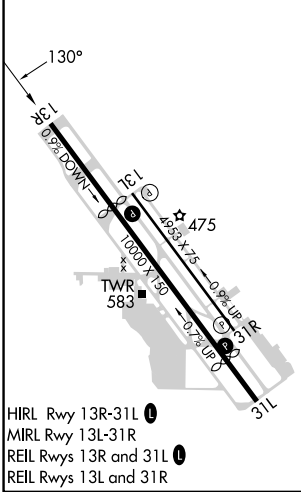
⚠ For uncompensated Baro-VNAV systems, procedure NA below 1°C or above 54°C.

MISSED APPROACH: Climb to 900 then climbing left turn to 4000 direct TRM VORTAC and hold.

ATIS	SOCAL APP CON	PALM SPRINGS TOWER*	GND CON	CLNC DEL	UNICOM
124.65	126.7 370.95 135.275 251.1	119.7 (CTAF) 377.05	121.9	128.35	122.95



ELEV 476	D	TDZE 451
----------	----------	----------



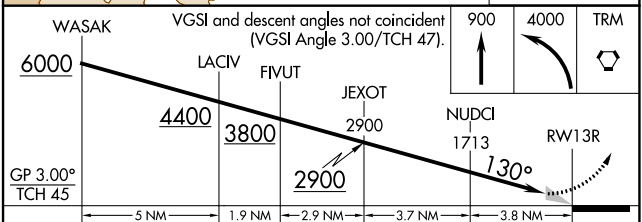
PALM SPRINGS, CALIFORNIA
Amdt 1A 05DEC19

Procedure NA for arrival on TRM VORTAC airway radials 263 CW 021.

(IAF) THERMAL TRM 9000 (RNP 0.30)

MISSED APCH FIX

THERMAL TRM 130° 4 NM



CATEGORY	A	B	C	D
RNP 0.17 DA		812-1¼	361 (400-1¼)	
RNP 0.30 DA		882-1½	431 (500-1½)	

AUTHORIZATION REQUIRED

33°50'N-116°30'W

PALM SPRINGS INTL (PSP)
RNAV (RNP) Z RWY 13R

SW-3, 28 NOV 2024 to 26 DEC 2024

SW-3, 28 NOV 2024 to 26 DEC 2024