

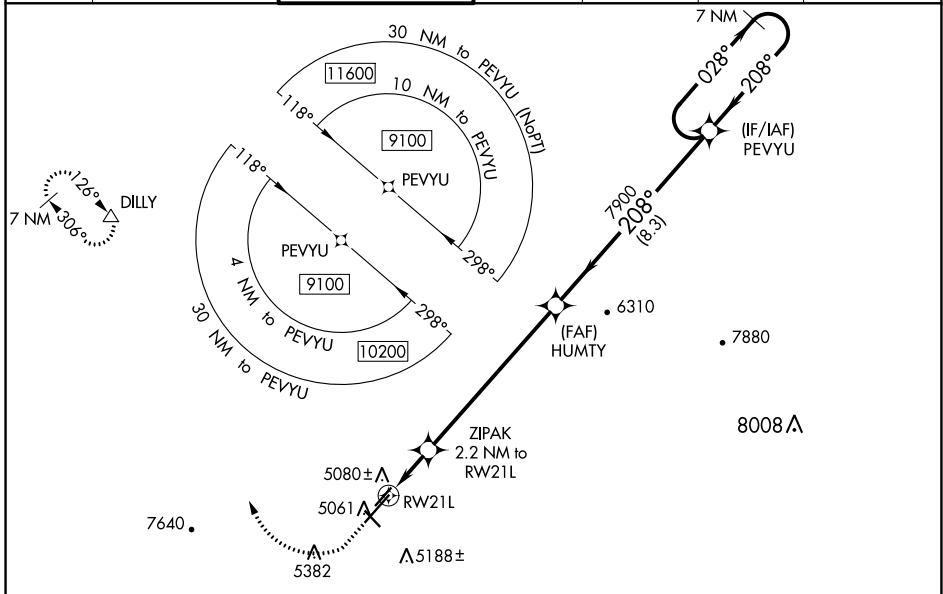
WAAS CH 40002 W21A	APP CRS 208°	Rwy Idg TDZE Apt Elev	7619 4977 5045
--	------------------------	-----------------------------	---

RNAV (GPS) RWY 21L

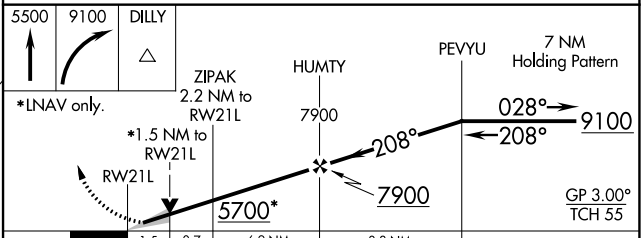
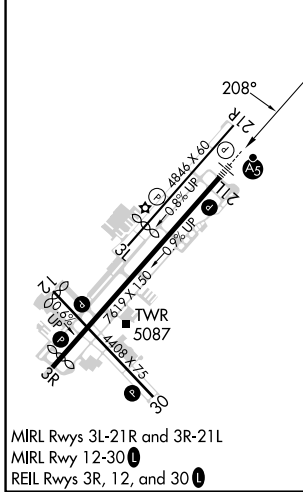
PRESCOTT RGNL/ERNEST A LOVE FLD (P.R.C)

RNP APCH - GPS.	<p>▼ For uncompensated Baro-VNAV systems, LNAV/VNAV NA below -11°C or above 47°C. For inoperative ALS, increase LPV all Cats visibility to 1 SM, LNAV/VNAV all Cats visibility to 1½ SM, and LNAV Cat C/D visibility to 1¾ SM. Circling Rwy 3L, 12, 30 NA at night. # Missed approach requires a minimum climb of 345 feet per NM to 7300.</p>	MALSR	MISSED APPROACH: Climb to 5500 then climbing right turn to 9100 direct DILLY and hold, continue climb-in-hold to 9100.
-----------------	--	-------	--

ATIS 127.2	PHOENIX APP CON 133.575 281.55	PRESCOTT TOWER * 125.3 (CTAF) 257.9	GND CON 121.7	CLNC DEL 119.25	128.75 0	UNICOM 122.95
----------------------	--	---	-------------------------	---------------------------	-----------------	-------------------------



ELEV 5045	D	TDZE 4977
-----------	----------	-----------



CATEGORY	A	B	C	D
LPV DA	# 5177-½ 200 (200-½)			
LPV DA	5277-½ 300 (300-½)			
LNAV/VNAV DA	5391-¾ 414 (400-¾)			
LNAV MDA	5480-½ 503 (500-½)	5480-1 503 (500-1)		
C CIRCLING	5520-1 475 (500-1)	5760-1 715 (800-1)	6080-3 1035 (1100-3)	6680-3 1635 (1700-3)

PRESCOTT, ARIZONA
MIRL Rwy 12-30
REIL Rwy 3R, 12, and 30

PRESCOTT RGNL/ERNEST A LOVE FLD (P.R.C)
34°39'N-112°25'W

RNAV (GPS) RWY 21L

SW-4, 28 NOV 2024 to 26 DEC 2024

SW-4, 28 NOV 2024 to 26 DEC 2024