

(POAKE2.POAKE) 23334

# POAKE TWO DEPARTURE

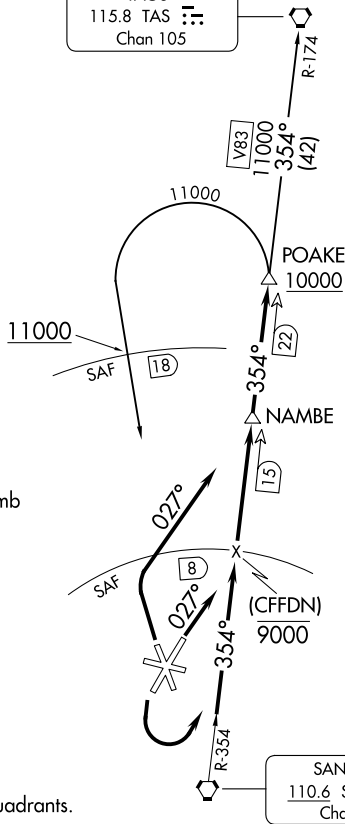
AL-548 (FAA)

SANTA FE RGNL (SAF)  
SANTA FE, NEW MEXICO

ALBUQUERQUE CENTER  
132.8 346.35  
ATIS  
128.55  
GND CON  
121.7  
SANTA FE TOWER\*  
119.5 (CTAF) 239.3

**TOP ALTITUDE:  
ASSIGNED by ATC**

TAOS  
115.8 TAS  
Chan 105



### TAKEOFF MINIMUMS

Rwy 2: Standard with minimum climb of 220' per NM to 7300.

Rwy 20, 30: Standard.

CAUTION: Mountainous terrain all quadrants.

NOTE: DME required.

NOTE: Chart not to scale.

### DEPARTURE ROUTE DESCRIPTION

**TAKEOFF RUNWAY 2:** Climb heading 027° thence. . . .

**TAKEOFF RUNWAY 20:** Climbing left turn thence. . . .

**TAKEOFF RUNWAY 33:** Climbing right turn to heading 027° thence. . . .

. . . . Intercept and proceed on SAF R-354 to POAKE DME fix. Cross 8 DME ARC north of SAF VORTAC at or below 9000. Cross POAKE DME fix at or above 10000. Then on (transition) or (assigned route).

**SANTA FE TRANSITION (POAKE2.SAF):** From POAKE DME fix left turn direct SAF VORTAC. Cross 18 DME north of SAF VORTAC at/above 11000'.

**TAOS TRANSITION (POAKE2.TAS):** From POAKE DME fix via SAF R-354 and TAS R-174 to TAS VORTAC.

# POAKE TWO DEPARTURE

(POAKE2.POAKE) 05JAN17

SANTA FE, NEW MEXICO  
SANTA FE RGNL (SAF)

SW-1, 28 NOV 2024 to 26 DEC 2024

SW-1, 28 NOV 2024 to 26 DEC 2024