

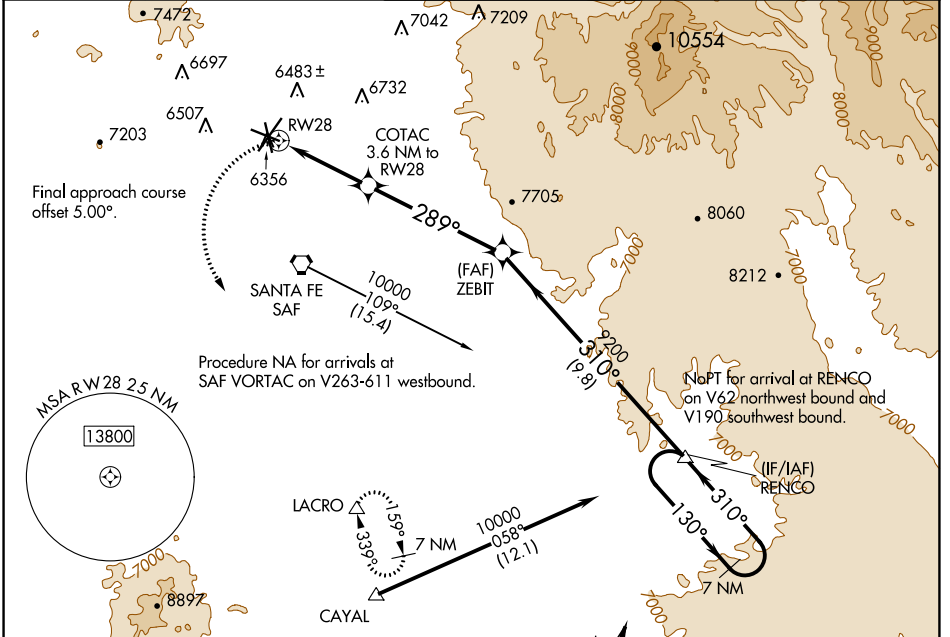
APP CRS	Rwy Idg	6301
289°	TDZE	6307
	Apt Elev	6349

RNAV (GPS) RWY 28

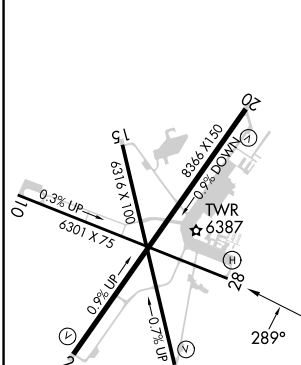
SANTA FE RGNL (SAF)

▽	DME/DME RNP-0.3 NA.	MISSED APPROACH: Climbing left turn to 9200 direct LACRO and hold.
----------	---------------------	--------------------------------------------------------------------

ATIS 128.55	ALBUQUERQUE CENTER 132.8 346.35	SANTA FE TOWER ★ 119.5 (CTAF) 239.3	GND CON 121.7	UNICOM 122.95
-----------------------	-------------------------------------------	-----------------------------------------------	-------------------------	-------------------------



ELEV 6349	D	TDZE 6307
-----------	----------	-----------



REIL Rws 10, 15, 20 and 33
MIRL Rws 2-20 and 15-33

9200	LACRO	ZEBIT	RENCOC	7 NM Holding Pattern
	COTAC 3.6 NM to RW28	ZEBIT	RENCOC	
	RW28	ZEBIT	RENCOC	
	1.9 NM to RW28	ZEBIT	RENCOC	
	1.7 NM	ZEBIT	RENCOC	
	5.4 NM	ZEBIT	RENCOC	
	9.8 NM	ZEBIT	RENCOC	
7480	9200			
	3.00° TCH 45			
	289°	310°	130°	10000
			310°	
CATEGORY	A	B	C	D
LNAV MDA	6960-1	653 (700-1)	6960-1 $\frac{7}{8}$	653 (700-1 $\frac{7}{8}$)
C CIRCLING	6960-1	611 (700-1)	7340-3 991 (1000-3)	7660-3 1311 (1400-3)

SW-1, 28 NOV 2024 to 26 DEC 2024

SW-1, 28 NOV 2024 to 26 DEC 2024