

SPOKANE, WASHINGTON

ILS or LOC RWY 23

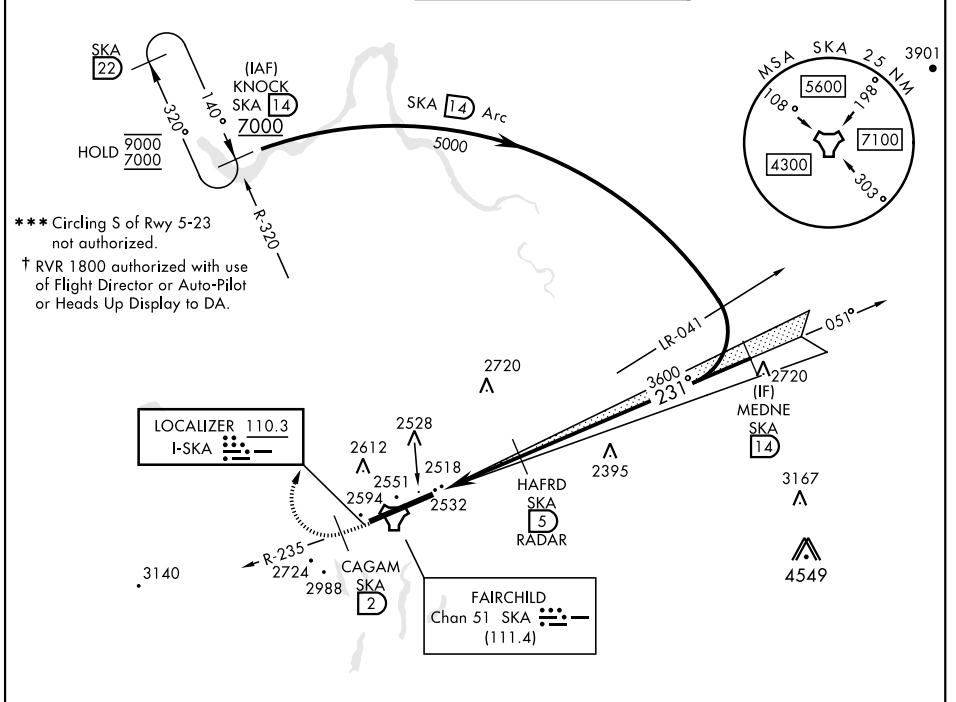
LOC I-SKA 110.3	APCH CRS 231°	Rwy Idg 13,899 TDZE 2423 Arprt Elev 2462	[USAF]	FAIRCHILD AFB (KSKA)
---------------------------	-------------------------	---	--------	----------------------

DME or RADAR reqrd for LOC. RADAR reqrd for KNOCK holding.

ALSF-1

MISSED APPROACH: Climb to 7000 via SKA R-235. At CAGAM, turn right heading 005° to intcp SKA R-320 to KNOCK and hold, cont climb in hold to 7000.

ATIS 257.625	SPOKANE APP CON 123.75 282.25 (208° - 028°) 133.35 263.0 (029° - 207°)	TOWER 120.35 233.7	GND CON 123.6 275.8
------------------------	--	------------------------------	-------------------------------

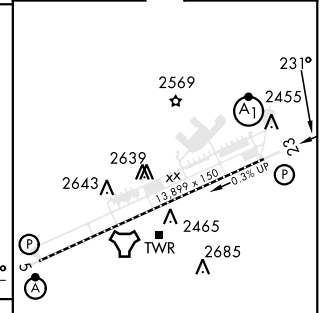
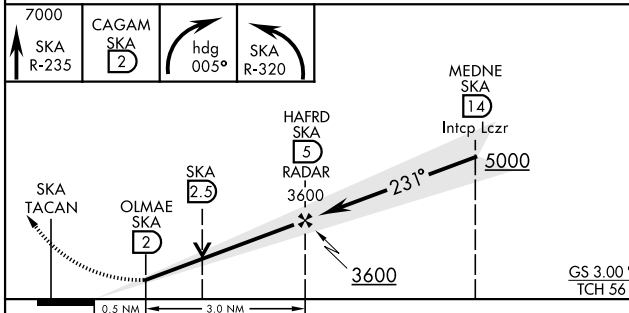


NW-1, 28 NOV 2024 to 26 DEC 2024

NW-1, 28 NOV 2024 to 26 DEC 2024

EMERG SAFE ALT 100 NM 10,900

ELEV	2462	TDZE	2423
------	------	------	------



CATEGORY	A	B	C	D	E	HIRL Rwy 5-23 TDZL/CL Rwy 5
S-ILS 23*†	2623/24		200	(200-½)		
S-LOC 23**	2800/24	377 (400-½)	2800/35	377	(400-¾)	
CIRCLING	2900-1	2920-1	3040-1½	3040-2	3600-3	
	438 (500-1)	458 (500-1)	578 (600-1½)	578 (600-2)	1138 (1200-3)	
FAF to MAP 3.0 NM						
Knots	60	90	120	150	180	
Min:Sec	3:00	2:00	1:30	1:12	1:00	

SPOKANE, WASHINGTON 47°37'N-117°39'W FAIRCHILD AFB (KSKA)

Amdt 4 03NOV22

ILS or LOC RWY 23