

SPOKANE, WASHINGTON

RNAV (GPS) RWY 5

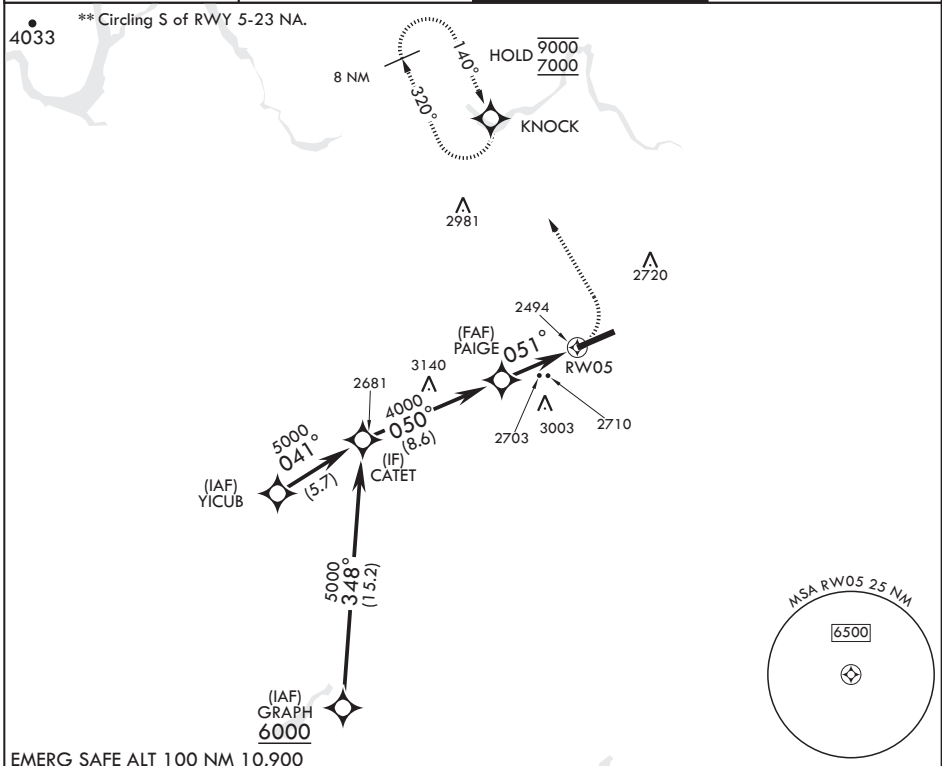
APCH CRS	Rwy Idg	13,899
051°	TDZE	2462
	Arprt Elev	2462

AL-553 (USAF)

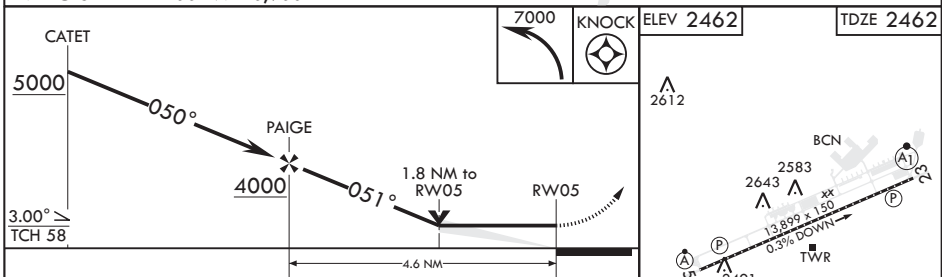
FAIRCHILD AFB (KSKA)

RNP APCH	ALSF-2	MISSED APPROACH: Climbing left turn to 7000 direct KNOCK and hold, continue climb in hold to 7000.
RADAR required for KNOCK holding.		
<p>▼ * When ALS inop, increase CAT A RVR to 55, vis to 1 mile, CAT B RVR to 60, vis to 1 1/4 miles, and CAT CDE vis to 2 1/2 miles.</p>		

ATIS 257.625	SPOKANE APP CON 123.75 282.25 (208°-028°) 133.35 263.0 (029°-207°)	TOWER 120.35 233.7	GND CON 123.6 275.8
------------------------	--	------------------------------	-------------------------------



EMERG SAFE ALT 100 NM 10,900



CATEGORY	A	B	C	D	E
LNAV MDA*	3100/24	638 (700-½)	3100-1⅓	638	(700-1¼)
C CIRCLING**	3100-1	638 (700-1)	3100-1¼	3100-2	3600-3
			638 (700-1¼)	638 (700-2)	1138 (1200-3)

HIRL all Rwys
TDZL/CL Rwy 5

SPOKANE, WASHINGTON

47°37'N - 117°39'W

FAIRCHILD AFB (KSKA)

Amdt 2 03NOV22

RNAV (GPS) RWY 5

NW-1, 28 NOV 2024 to 26 DEC 2024

NW-1, 28 NOV 2024 to 26 DEC 2024