

ABERDEEN, MARYLAND

# RNAV (GPS) RWY 22

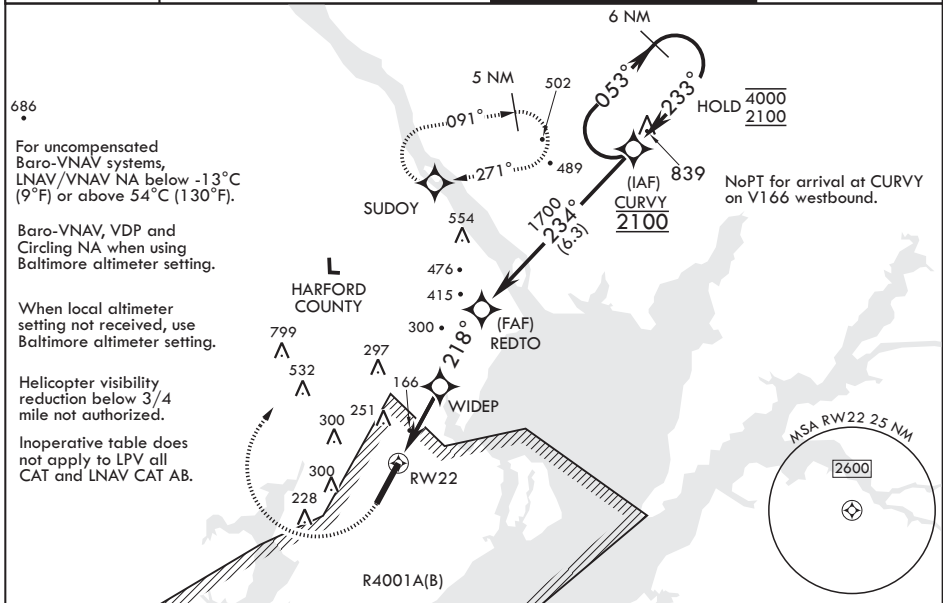
WAAS CH <b>70342</b> W22A	APCH CRS <b>218°</b>	Rwy ldg TDZE Arprt Elev	<b>7998</b> <b>45</b> <b>45</b>
---------------------------------	-------------------------	-------------------------------	---------------------------------------

-(USA)

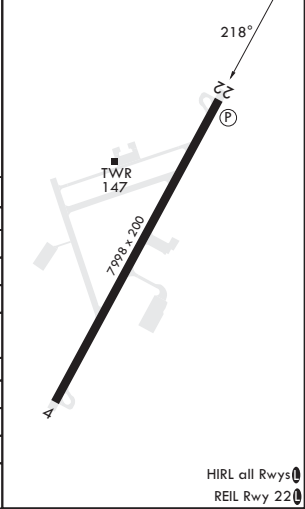
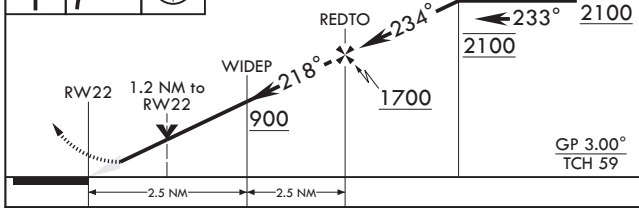
PHILLIPS AAF (ABERDEEN PROVING GROUND) (KAPG)

RNP APCH-GPS	MISSED APPROACH: Climb to 500, then climbing right turn to 2000 direct SUDOY and hold.
<b>V</b> **Circling NA SE of RWY 4-22.	

ATIS* <b>124.425</b>	POTOMAC APP CON/DEP CON <b>125.525 291.625</b>	TOWER* <b>126.15 (CTAF) 0 229.6</b>	GND CON <b>121.9 241.0</b>
-------------------------	---	--	-------------------------------



500	2000	SUDOY	VGSI and RNAV glidepath not coincident (VGSI Angle 3.00/TCH 49).	6 NM Holding Pattern	ELEV 45	TDZE 45
-----	------	-------	--	----------------------	---------	---------



CATEGORY	A	B	C	D
LPV DA	295-1	250	(300-1)	
LNAV/VNAV DA	560-1 <sup>3</sup> / <sub>8</sub>	515	(600-1 <sup>3</sup> / <sub>8</sub> )	880-2 <sup>3</sup> / <sub>4</sub>
LNAV MDA	560-1	515	(600-1)	515 (600-1 <sup>3</sup> / <sub>8</sub> )
<b>C</b> CIRCLING**	560-1 515 (600-1)	640-1 595 (600-1)	680-1 <sup>3</sup> / <sub>4</sub> 635 (700-1 <sup>3</sup> / <sub>4</sub> )	880-2 <sup>3</sup> / <sub>4</sub> 835 (900-2 <sup>3</sup> / <sub>4</sub> )
BALTIMORE WASHINGTON INTL ALTIMETER SETTING MINIMUMS				
LPV DA	376-1 <sup>1</sup> / <sub>4</sub>	281	(300-1 <sup>1</sup> / <sub>4</sub> )	
LNAV/VNAV DA	657-1 <sup>3</sup> / <sub>4</sub>	612	(600-1 <sup>3</sup> / <sub>4</sub> )	
LNAV MDA	660-1 <sup>1</sup> / <sub>4</sub>	515 (700-1 <sup>1</sup> / <sub>4</sub> )	660-1 <sup>3</sup> / <sub>4</sub>	515 (700-1 <sup>3</sup> / <sub>4</sub> )
<b>C</b> CIRCLING**	660-1 615 (700-1 <sup>1</sup> / <sub>4</sub> )	740-1 <sup>1</sup> / <sub>4</sub> 695 (700-1 <sup>1</sup> / <sub>4</sub> )	780-2 735 (800-2)	961-3 916 (1000-3)

ABERDEEN, MARYLAND 39°28'N - 76°10'W PHILLIPS AAF (ABERDEEN PROVING GROUND) (KAPG)

Amdt 3 15JUN23

# RNAV (GPS) RWY 22

NE-3, 28 NOV 2024 to 26 DEC 2024

HIRL all Rwy's  
REIL Rwy 22