

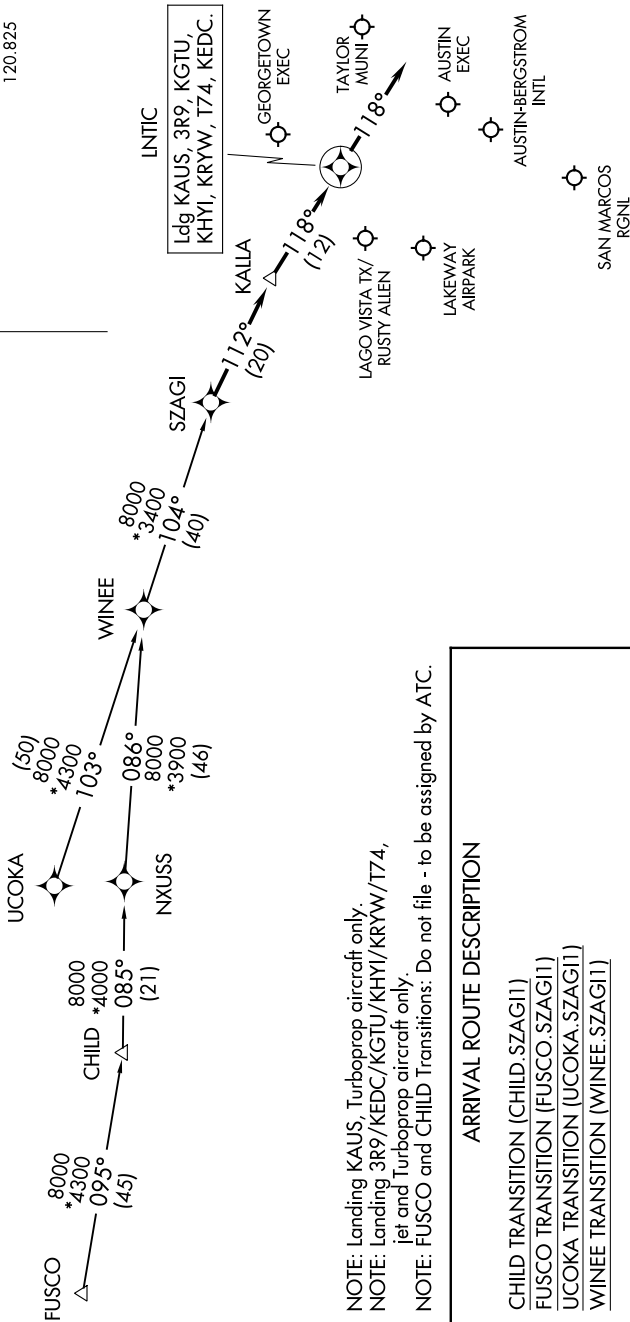
(SZAGI.SZAGI1) 24249

AL-556 (FAA)

SZAGI ONE ARRIVAL (RNAV)

AUSTIN, TEXAS

AUSTIN APP CON
 118.15 350.25 (SFC-7000)
 119.0 370.85 (8000-12000)
 AUS D-ATIS
 124.4
 GTU ATIS
 118.6
 HYI ATIS *



RNAV 1 - DME/DME/IRU or GPS.
 RADAR required.

NOTE: Landing KAUS, Turboprop aircraft only.
 NOTE: Landing 3R9/KEDC/KGJTU/KHYI/KRYW/T74, jet and Turboprop aircraft only.
 NOTE: FUSCO and CHILD Transitions: Do not file - to be assigned by ATC.

ARRIVAL ROUTE DESCRIPTION

CHILD TRANSITION (CHILD.SZAGI1)
 FUSCO TRANSITION (FUSCO.SZAGI1)
 UCOKA TRANSITION (UCOKA.SZAGI1)
 WINEE TRANSITION (WINEE.SZAGI1)

LANDING ALL AIRPORTS: From SZAGI on track 112° to KALLA, then on track 118° to LNTIC, then on track 118°. Expect RADAR vectors to final approach course.

NOTE: Chart not to scale.

SZAGI ONE ARRIVAL (RNAV)

(SZAGI.SZAGI1) 05SEP24

AUSTIN, TEXAS