

DOVER, DELAWARE

ILS RWY 1 (CAT II)

DOVER AFB (KDOV)

LOC I-DOV 109.95	APCH CRS 015°	Rwy Idg TDZE Arprt Elev 9602 25 29
----------------------------	-------------------------	--

[USAF]

RNAV1-GPS or RADAR required for procedure entry.

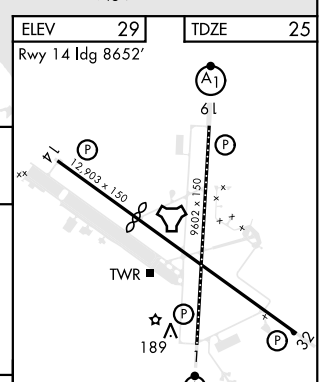
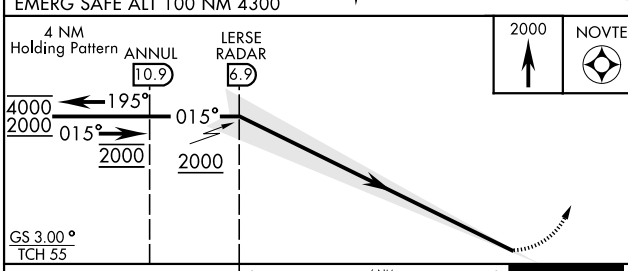
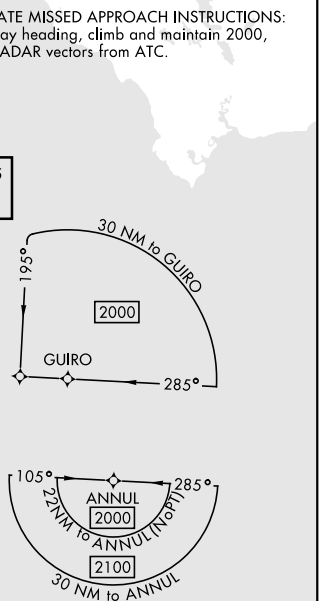
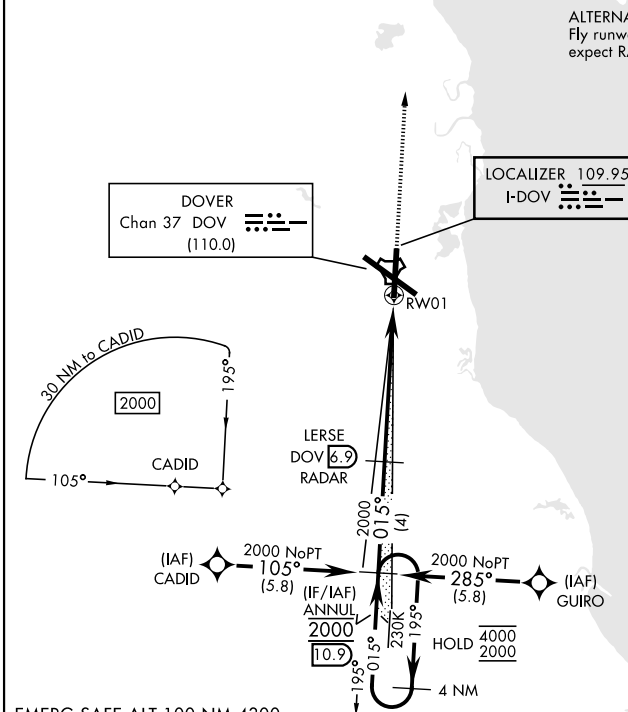
ALSF-2

MISSED APPROACH: Climb to 2000 direct NOVTE and hold.

ATIS 127.825 273.5	APP CON 132.425 257.875	TOWER 126.35 279.625	GND CON 118.875 225.4	CLNC DEL 125.55 289.4
------------------------------	-----------------------------------	--------------------------------	---------------------------------	---------------------------------

CATEGORY II ILS-SPECIAL AIRCREW & AIRCRAFT CERTIFICATION REQUIRED

ALTERNATE MISSED APPROACH INSTRUCTIONS:
Fly runway heading, climb and maintain 2000, expect RADAR vectors from ATC.



CATEGORY	A	B	C	D	E
S-ILS 1		RA 98/12	100	DA 125	

DOVER, DELAWARE 39°08'N-75°28'W DOVER AFB (KDOV)

Orig 10AUG23

ILS RWY 1 (CAT II)

NE-3, 28 NOV 2024 to 26 DEC 2024

NE-3, 28 NOV 2024 to 26 DEC 2024