

DOVER, DELAWARE

ILS or LOC or RNAV (GPS) RWY 19

SBAS CH 52208 W19A	APCH CRS 195°	Rwy ldg 9602 TDZE 23 Arprt Elev 29
--	-------------------------	---

[USAF]

DOVER AFB (KDOV)

RNP APCH. RNAV1 - GPS or RADAR required for ILS, LOC

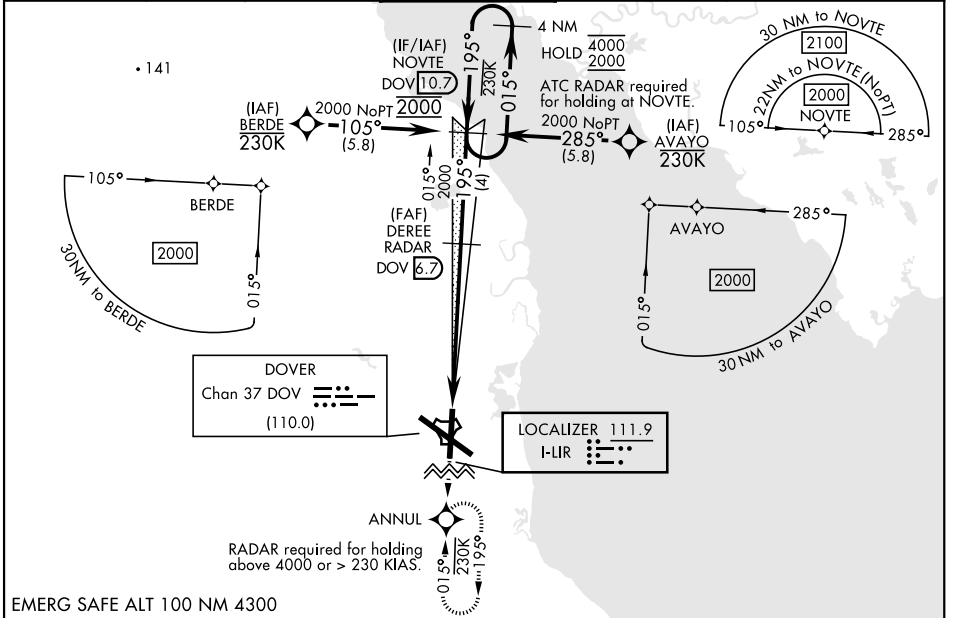
- * When ALS inop, increase RVR to 40, vis to 3/4 mile. RVR of 18 authorized with use of FD or AP or HUD to DA.
- ** When ALS inop, increase CAT AB RVR to 55, vis to 1 mile, CAT CDE vis to 1 3/8 miles.
- *** When ALS inop, increase CAT AB RVR to 55, vis to 1 mile, CAT CD vis to 1 3/8 miles.



MISSED APPROACH: Climb to 2000 direct ANNUL and hold.

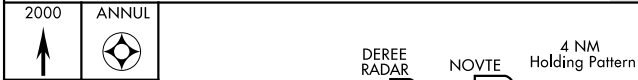
ALTERNATE MISSED APPROACH: Fly runway heading, climb and maintain 2000, expect radar vectors from ATC.

ATIS 127.825 273.5	APP CON 132.425 257.875	TOWER 126.35 279.625	GND CON 118.875 225.4	CINC DEL 125.55 289.4
------------------------------	-----------------------------------	--------------------------------	---------------------------------	---------------------------------

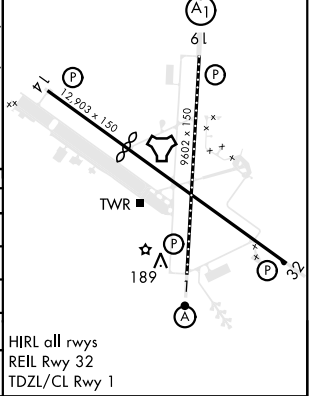
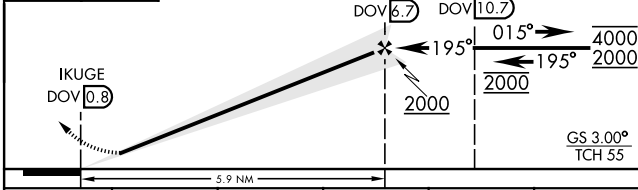


NE-3, 28 NOV 2024 to 26 DEC 2024

NE-3, 28 NOV 2024 to 26 DEC 2024



ELEV 29 Rwy 14 ldg 8652'	TDZE 23
-----------------------------	---------



CATEGORY	A	B	C	D	E
S-ILS 19*	223/24		200	(200-1/2)	
LPV DA*	223/24		200	(200-1/2) NA	
S-LOC 19**	480/24	457 (500-1/2)	480/45	457	(500-7/8)
LNAV MDA***	480/24	457 (500-1/2)	480/45	457 (500-7/8)	NA
CIRCLING	540-1	511 (600-1)	620-1 1/2 591 (600-1/2)	620-2 591 (600-2)	1080-3 1051 (1100-3)

DOVER, DELAWARE
Amdt 3 10AUG23

39°08'N-75°28'W

DOVER AFB (KDOV)

ILS or LOC or RNAV (GPS) RWY 19