

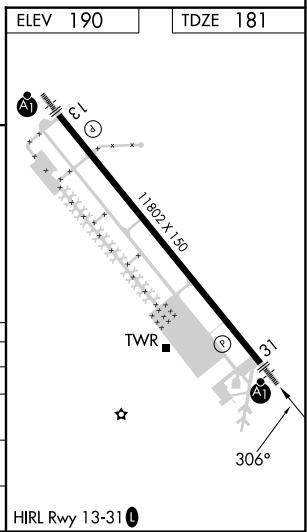
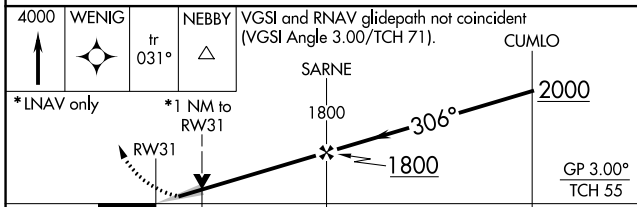
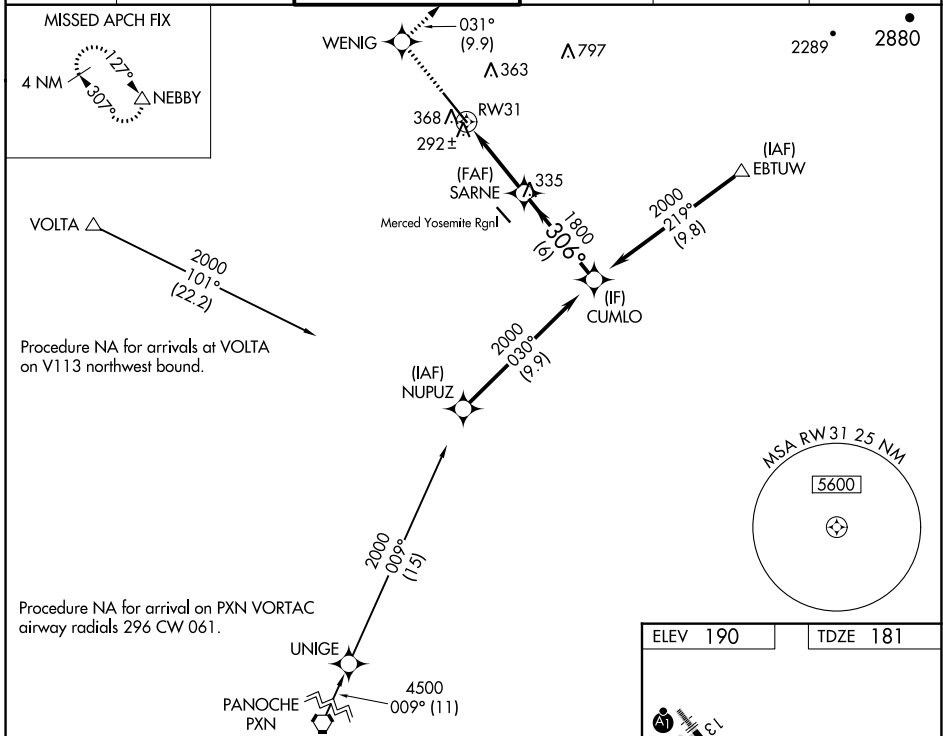
WAAS CH 87110 W31A	APP CRS 306°	Rwy Idg 11802 TDZE 181 Apt Elev 190
--	------------------------	--

RNAV (GPS) RWY 31

CASTLE (MER)

RNP APCH.	ALSF-1 	MISSED APPROACH: Climb to 4000 direct WENIG and on track 031° to NEBBY and hold, continue climb-in-hold to 4000.
-----------	------------	--

ATIS 124.475	NORCAL APP CON 120.95 269.45	CASTLE TOWER ★ 118.175 (CTAF) 235.775	GND CON 133.575	UNICOM 122.95	123.0
------------------------	--	---	---------------------------	-------------------------	--------------



CATEGORY	A	B	C	D
LPV DA		381-½	200 (200-½)	
LNNAV/VNAV DA		498-½	317 (400-½)	
LNNAV MDA	560-½	379 (400-½)	560-⅝	379 (400-⅝)
C CIRCLING	660-1	470 (500-1)	720-1½	800-2
			530 (600-1½)	610 (700-2)

SW-2, 28 NOV 2024 to 26 DEC 2024

SW-2, 28 NOV 2024 to 26 DEC 2024