

LOC I-HFE 111.7	APP CRS 281°	Rwy ldg 10102 TDZE 1174 Apt Elev 1203
---------------------------	------------------------	--

ILS RWY 28R (SA CAT I & II)

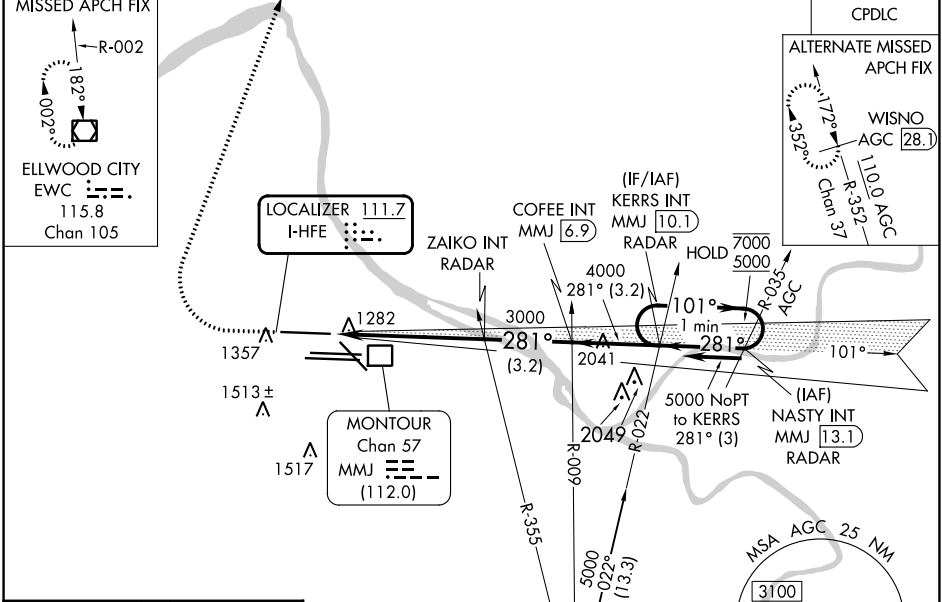
PITTSBURGH INTL (PIT)

From NASTY: Radar required for procedure entry.

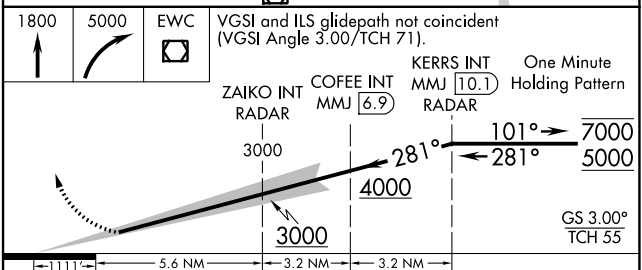
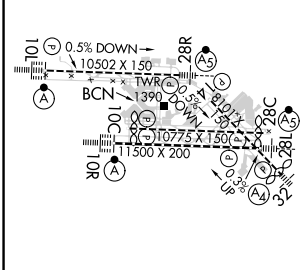
Simultaneous approach authorized. DME from MMJ DME. Simultaneous reception of I-HFE and MMJ DME required. SA CAT I: Requires specific OPSPEC, MSPEC, or LOA approval and use of HUD to DH. SA CAT II: Reduced lighting: requires specific OPSPEC, MSPEC, or LOA approval and use of autoland or HUD to touchdown.

MALSR MISSED APPROACH: Climb to 1800 then climbing right turn to 5000 direct EVWC VOR/DME and hold.

D-ATIS ARR 127.25 DEP 135.9	PITTSBURGH APP CON 123.95 360.8	PITTSBURGH TOWER 128.3 291.7	GND CON SOUTH 121.9 348.6 NORTH 127.8 348.6	CLNC DEL 126.75 353.7
---	---	--	---	---------------------------------



ELEV 1203	D	TDZE 1174
------------------	----------	------------------



CATEGORY	A	B	C	D
S-ILS 28R	SA CAT I	RA 192/14	150	DA 1324
S-ILS 28R	SA CAT II	RA 116/12	100	DA 1274

SA CATEGORY I & II ILS - SPECIAL AIRCREW & AIRCRAFT CERTIFICATION REQUIRED

REIL Rwy 10C
HIRL all Rwys
TDZ/CL Rwys 10L, 10R, 28L, 28R, 28C, and 32

NE-4, 28 NOV 2024 to 26 DEC 2024

NE-4, 28 NOV 2024 to 26 DEC 2024