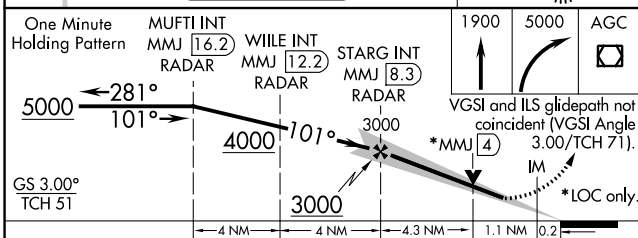
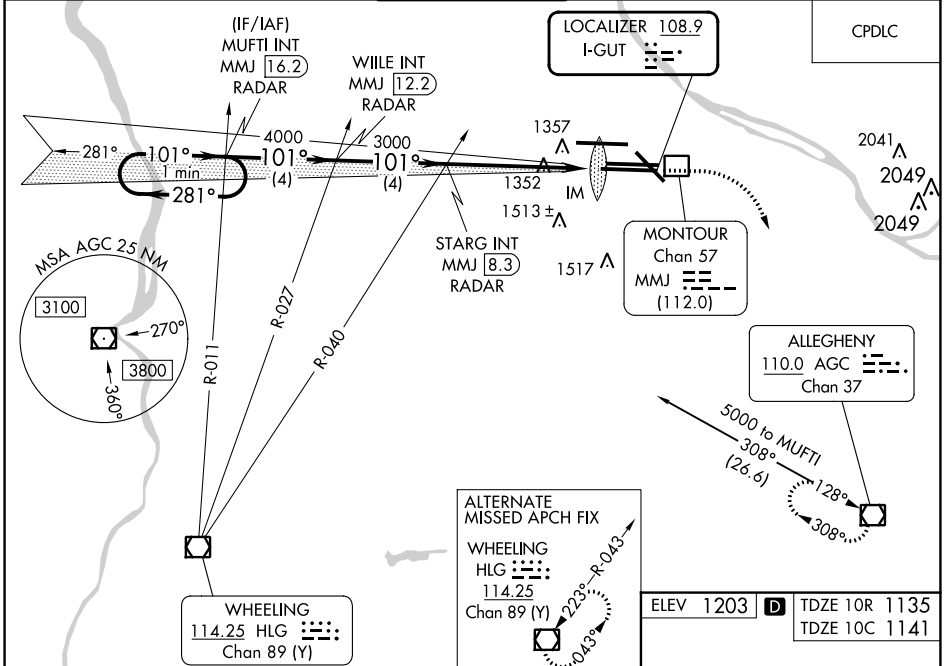


LOC I-GUT	APP CRS	Rwy Idg	10R	10C
108.9	101°	11492	9708	9708
		TDZE	1135	1141
		Apt Elev	1203	1203

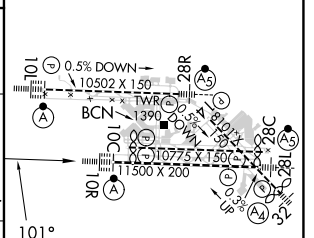
ILS or LOC RWY 10R

PITTSBURGH INTL (PIT)

<p>Simultaneous approach authorized with Rwy 10L. For inop ALS, increase S-ILS 10R Cat E visibility to RVR 4000. For inop ALS, increase S-LOC 10R Cat C, D, E visibility to 1/2 SM.</p>	ALSF-2	MISSED APPROACH: Climb to 1900 then climbing right turn to 5000 direct AGC VOR/DME and hold, continue climb-in-hold to 5000.														
	<table border="1"> <tr> <td>D-ATIS</td> <td>PITTSBURGH APP CON</td> <td>PITTSBURGH TOWER</td> <td>GND CON</td> <td>CLNC DEL</td> </tr> <tr> <td>ARR 127.25</td> <td>123.95 360.8</td> <td>128.3 291.7</td> <td>SOUTH 121.9 348.6</td> <td>126.75 353.7</td> </tr> <tr> <td>DEP 135.9</td> <td></td> <td></td> <td>NORTH 127.8 348.6</td> <td></td> </tr> </table>	D-ATIS	PITTSBURGH APP CON	PITTSBURGH TOWER	GND CON	CLNC DEL	ARR 127.25	123.95 360.8	128.3 291.7	SOUTH 121.9 348.6	126.75 353.7	DEP 135.9			NORTH 127.8 348.6	
D-ATIS	PITTSBURGH APP CON	PITTSBURGH TOWER	GND CON	CLNC DEL												
ARR 127.25	123.95 360.8	128.3 291.7	SOUTH 121.9 348.6	126.75 353.7												
DEP 135.9			NORTH 127.8 348.6													



ELEV 1203	TDZE 10R 1135
	TDZE 10C 1141



CATEGORY	A	B	C	D	E
S-ILS 10R	1335/18 200 (200-1/2)			1335/24 200 (200-1/2)	
S-LOC 10R	1620/24 485 (500-1/2)		1620/50 1620/60 485 (500-1) 485 (500-1/4)		
SIDESTEP 10C	1620/50	479 (500-1)	1620-1 1/2 479 (500-1/2)	1620-2 479 (500-2)	1620-2 1/2 479 (500-2 1/4)
CIRCLING	1700-1	497 (500-1)	1880-2 677 (700-2)	1880-2 1/4 677 (700-2 1/4)	1880-2 1/2 677 (700-2 1/2)

FAF to MAP 5.6 NM					
Knots	60	90	120	150	180
Min:Sec	5:36	3:44	2:48	2:14	1:52

NE-4, 28 NOV 2024 to 26 DEC 2024

NE-4, 28 NOV 2024 to 26 DEC 2024