

LOC/DME I-TQW <b>111.3</b> Chan <b>50</b>	APP CRS <b>325°</b>	Rwy ldg <b>7466</b> TDZE <b>1124</b> Apt Elev <b>1203</b>
---	------------------------	---

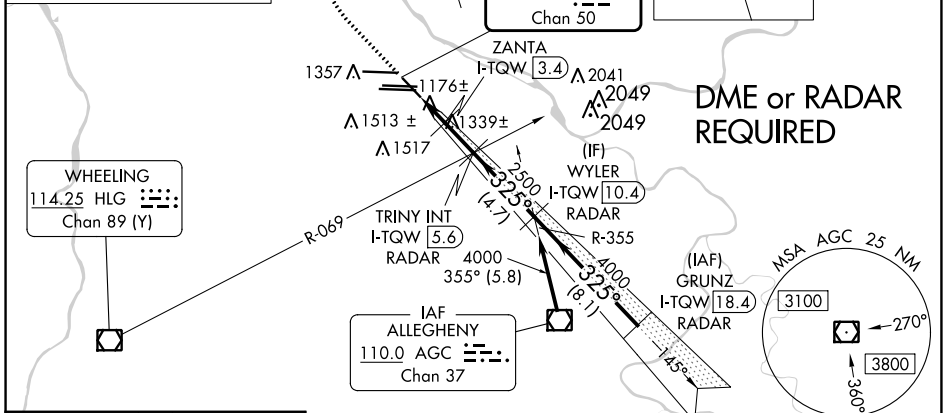
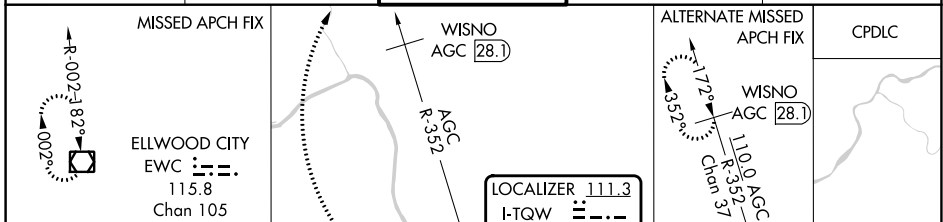
# ILS or LOC RWY 32

PITTSBURGH INTL (PIT)

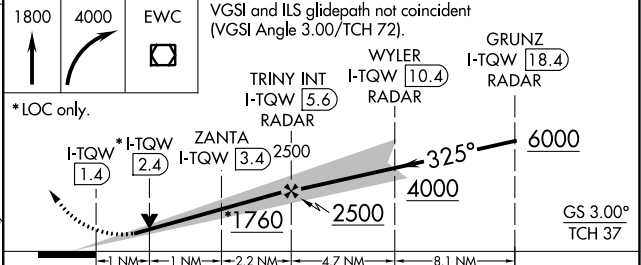
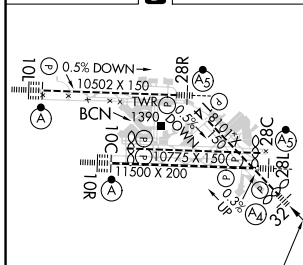
**⚠** DME or RADAR required. Inop table does not apply to S-ILS 32. For inop ALS, increase S-LOC 32 Cat E visibility to 1¾ SM and ZANTA fix minimums S-LOC 32 Cat E visibility to RVR 6000.

**MALS** MISSED APPROACH: Climb to 1800 then climbing right turn to 4000 direct EWC VOR/DME and hold.

D-ATIS ARR <b>127.25</b> DEP <b>135.9</b>	PITTSBURGH APP CON <b>123.95 360.8</b>	PITTSBURGH TOWER <b>128.3 291.7</b>	GND CON SOUTH <b>121.9 348.6</b> NORTH <b>127.8 348.6</b>	CLNC DEL <b>126.75 353.7</b>
---	---	--	---	---------------------------------



ELEV <b>1203</b>	<b>D</b>	TDZE <b>1124</b>
------------------	----------	------------------



CATEGORY	A	B	C	D	E
S-ILS 32	1324/40		200 (200-¾)		
S-LOC 32	1760/40	636 (600-¾)	1760-1½	636 (600-1½)	
<b>C</b> CIRCLING	1760-1	557 (600-1)	1880-2 677 (700-2)	1880-2¼ 677 (700-2¼)	1880-2½ 677 (700-2½)
ZANTA FIX MINIMUMS (DME REQUIRED)					
S-LOC 32	1520/40	396 (400-¾)	1520/45	396 (400-¾)	
<b>C</b> CIRCLING	1700-1	497 (500-1)	1880-2 677 (700-2)	1880-2¼ 677 (700-2¼)	1880-2½ 677 (700-2½)

FAF to MAP 4.2 NM					
Knots	60	90	120	150	180
Min:Sec	4:12	2:48	2:06	1:41	1:24

# PITTSBURGH INTL (PIT)

## ILS or LOC RWY 32

NE-4, 28 NOV 2024 to 26 DEC 2024

NE-4, 28 NOV 2024 to 26 DEC 2024