


# RNAV (RNP) Z RWY 28L

PITTSBURGH INTL (PIT)

APP CRS	Rwy Idg	<b>11500</b>
<b>281°</b>	TDZE	<b>1125</b>
	Apt Elev	<b>1203</b>

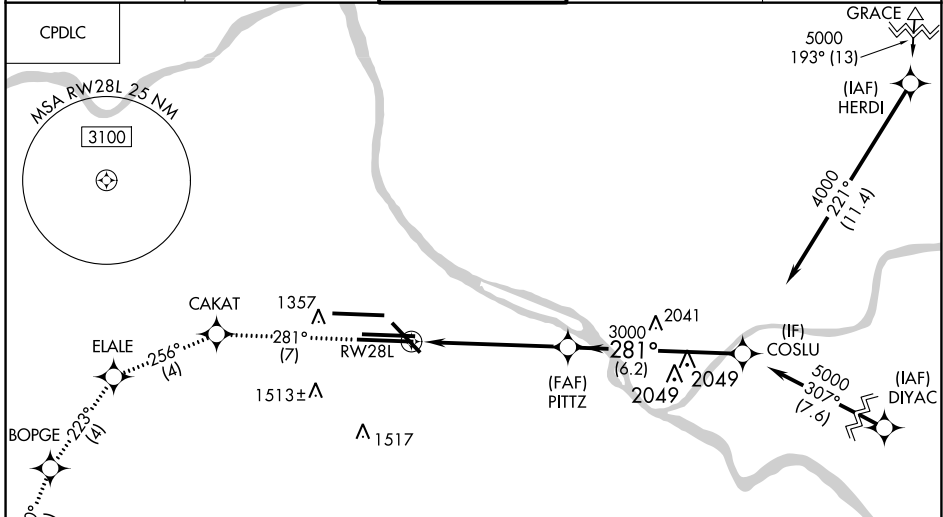
RNP AR APCH - GPS.

▼ For uncompensated Baro-VNAV systems, procedure NA below -18°C or above 54°C. Simultaneous approach authorized. For inop ALS, increase RNP 0.13 all Cats visibility to RVR 6000.

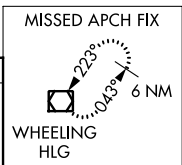
MALSR 

MISSED APPROACH: Climb to 4000 on track 281° to CAKAT and track 256° to ELALE and track 223° to BOPGE and track 210° to HLG VOR/DME and hold.

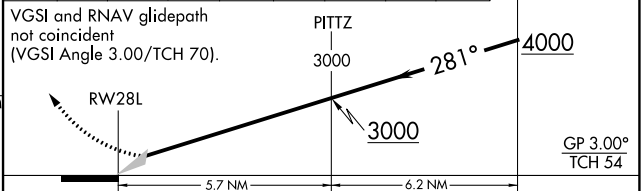
D-ATIS	PITTSBURGH APP CON	PITTSBURGH TOWER	GND CON	CLNC DEL
ARR <b>127.25</b>	<b>123.95 360.8</b>	<b>128.3 291.7</b>	SOUTH <b>121.9 348.6</b>	<b>126.75 353.7</b>
DEP <b>135.9</b>			NORTH <b>127.8 348.6</b>	



ELEV	<b>1203</b>	<b>D</b>	TDZE	<b>1125</b>
------	-------------	----------	------	-------------



4000	↑	tr 281°	CAKAT	tr 256°	ELALE	tr 223°	BOPGE	tr 210°	HLG	COSLU
------	---	---------	-------	---------	-------	---------	-------	---------	-----	-------



CATEGORY	A	B	C	D
RNP 0.13 DA		1529/40	404 (400-¾)	
RNP 0.30 DA		1579/45	454 (400-¾)	

**AUTHORIZATION REQUIRED**

REIL Rwy 10C  
HIRL all Rwys  
TDZ/CL Rwys 10L, 10R, 28L, 28R, 28C, and 32

NE-4, 28 NOV 2024 to 26 DEC 2024

NE-4, 28 NOV 2024 to 26 DEC 2024