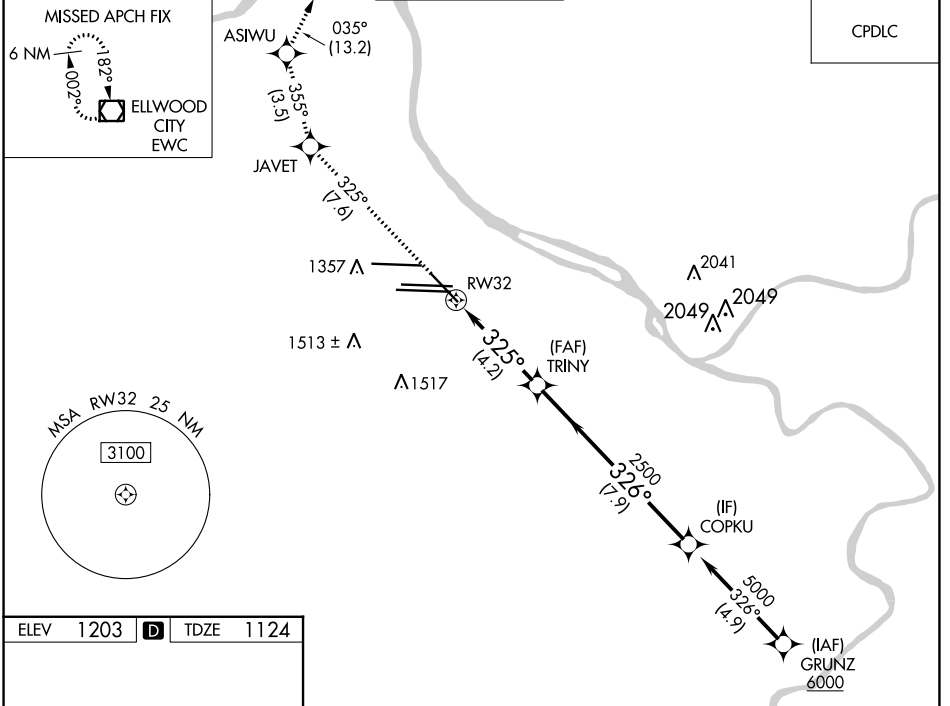


APP CRS 325°	Rwy ldg TDZE Apt Elev	7466 1124 1203
------------------------	-----------------------------	---

RNAV (RNP) Z RWY 32

PITTSBURGH INTL (PIT)

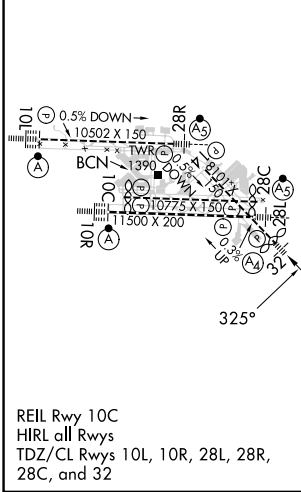
RNP AR APCH - GPS.		MALS	MISSED APPROACH: Climb to 4000 on track 325° to JAVET and track 355° to ASIWU and track 035° to EWC VOR/DME and hold.	
<p>▼ For uncompensated Baro-VNAV systems, procedure NA below -18°C (0°F) or above 54°C (130°F).</p>				
D-ATIS ARR 127.25 DEP 135.9	PITTSBURGH APP CON 123.95 360.8	PITTSBURGH TOWER 128.3 291.7	GND CON SOUTH 121.9 348.6 NORTH 127.8 348.6	CLNC DEL 126.75 353.7



NE-4, 28 NOV 2024 to 26 DEC 2024

NE-4, 28 NOV 2024 to 26 DEC 2024

ELEV 1203	D	TDZE 1124
-----------	----------	-----------



4000	JAVET	tr 355°	ASIWU	tr 035°	EWC
fr 325°					
VGSi and RNAV glidepath not coincident (VGSi Angle 3.00/TCH 72).					
	RWY 32	TRINY	COPKU		
		2500	5000		
		325°	326°		
		2500		GP 3.00° TCH 37	
		4.2 NM	7.9 NM		
CATEGORY	A	B	C	D	
RNP 0.30 DA	1503/40		379 (300-¾)		
AUTHORIZATION REQUIRED					