

DDANY THREE DEPARTURE (RNAV)  
(DDANY3.DDANY) 19MAY22  
ORLANDO, FLORIDA  
ORLANDO INTL (MCO)

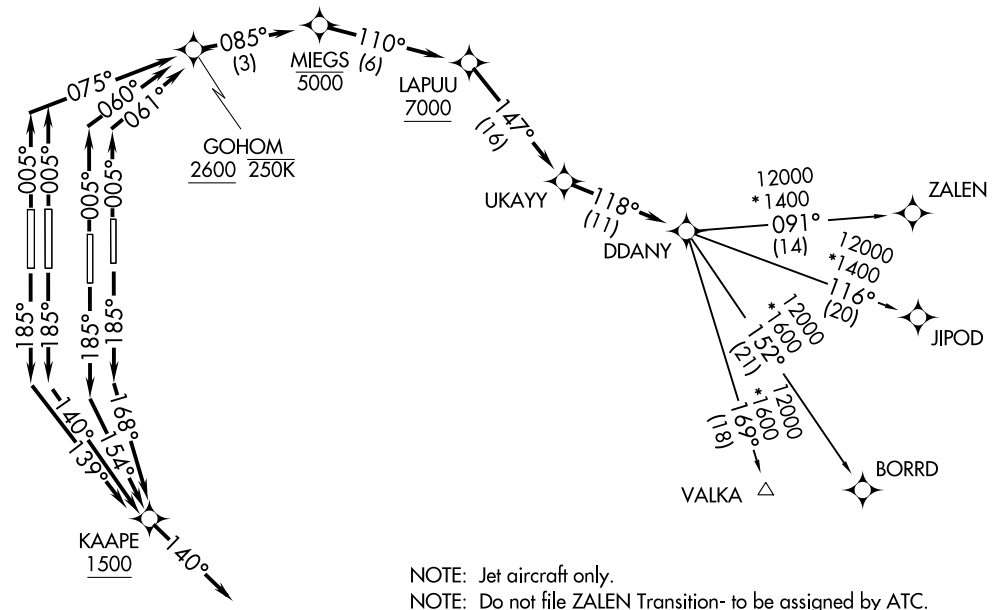
D-ATIS DEP  
120.525  
CLNC DEL  
134.7 341.7  
CPDLC  
GND CON  
126.4 (East)  
121.8 (West)  
ORLANDO TOWER  
118.45 253.5  
(Rwys 17L-35R, 17R-35L)  
124.3 253.5  
(Rwys 18L-36R, 18R-36L)  
ORLANDO DEP CON  
124.8 307.0



RNAV 1 - DME/DME/IRU or GPS.  
RADAR required.

TOP ALTITUDE:  
7000

TAKEOFF MINIMUMS  
Rwys 17L/R, 18L/R, 35L/R, 36L/R: Standard  
with minimum climb of 500' per NM to 600.



NOTE: Jet aircraft only.  
NOTE: Do not file ZALEN Transition- to be assigned by ATC.

(NARRATIVE ON FOLLOWING PAGE)

NOTE: Chart not to scale.

(DDANY3.DDANY) 22139  
AL-571 (FAA)  
ORLANDO INTL (MCO)  
ORLANDO, FLORIDA

# DDANY THREE DEPARTURE (RNAV)



## DEPARTURE ROUTE DESCRIPTION SEE ADDITIONAL REQUIREMENTS ON AAUP

TAKEOFF RUNWAY 17L: Climb on heading 185° to intercept course 168° to cross KAAPE at or above 1500, then on track 140°, for vectors to UKAYY, thence . . . .

TAKEOFF RUNWAY 17R: Climb on heading 185° to intercept course 154° to cross KAAPE at or above 1500, then on track 140°, for vectors to UKAYY, thence . . . .

TAKEOFF RUNWAY 18L: Climb on heading 185° to intercept course 140° to cross KAAPE at or above 1500, then on track 140°, for vectors to UKAYY, thence . . . .

TAKEOFF RUNWAY 18R: Climb on heading 185° to intercept course 139° to cross KAAPE at or above 1500, then on track 140°, for vectors to UKAYY, thence . . . .

TAKEOFF RUNWAY 35L: Climb on heading 005° to intercept course 060° to cross GOHOM at or above 2600 and at or below 250K, then on track 085° to cross MIEGS at or below 5000, then on track 110° to cross LAPUU at or above 7000, then on track 147° to UKAYY, thence . . . .

TAKEOFF RUNWAY 35R: Climb on heading 005° to intercept course 061° to cross GOHOM at or above 2600 and at or below 250K, then on track 085° to cross MIEGS at or below 5000, then on track 110° to cross LAPUU at or above 7000, then on track 147° to UKAYY, thence . . . .

TAKEOFF RUNWAYS 36L/R: Climb on heading 005° to intercept course 075° to cross GOHOM at or above 2600 and at or below 250K, then on track 085° to cross MIEGS at or below 5000, then on track 110° to cross LAPUU at or above 7000, then on track 147° to UKAYY, thence . . . .

. . . . on track 118° to DDANY. Maintain 7000, expect filed altitude 10 minutes after departure.

BORRD TRANSITION (DDANY3.BORRD)

JIPOD TRANSITION (DDANY3.JIPOD)

VALKA TRANSITION (DDANY3.VALKA)

ZALEN TRANSITION (DDANY3.ZALEN)

SE-3, 28 NOV 2024 to 26 DEC 2024

SE-3, 28 NOV 2024 to 26 DEC 2024