

LOC/DME I-DDO 110.5 Chan 42	APP CRS 005°	Rwy Idg TDZE Apt Elev	10000 88 96
--	------------------------	-----------------------------	--

ILS or LOC RWY 35L

ORLANDO INTL (MCO)

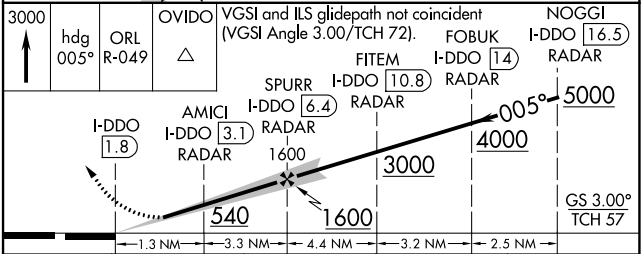
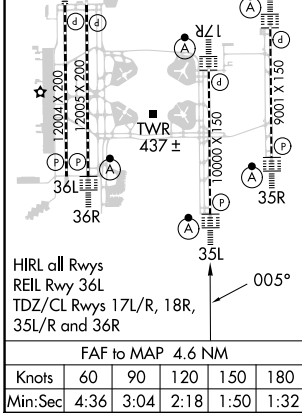
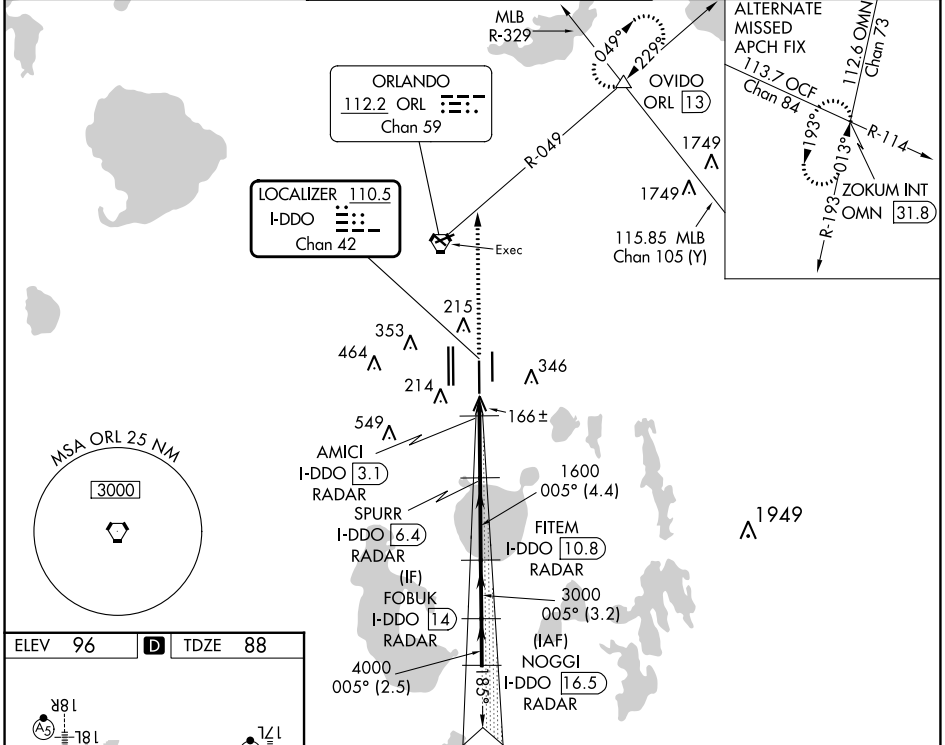
RADAR required for procedure entry. DME or RADAR required.

Bright lights on highway midway between Rwy 35L and Rwy 35R may be mistaken for runway lights. Simultaneous approach authorized. When using alternate missed approach, simultaneous approach NA.

ALSF-2

MISSED APPROACH: Climb to 3000 on heading 005° and ORL VORTAC R-049 to OVIDO INT/ORL 13 DME and hold.

D-ATIS ARR 121.25 DEF 120.525	ORLANDO APP CON 124.8 307.0	ORLANDO TOWER 118.45 253.5 (Rwys 17L-35R, 17R-35L) 124.3 253.5 (Rwys 18L-36R, 18R-36L)	GND CON (East) 126.4 (West) 121.8	CLNC DEL 134.7 341.7	CPDLC
---	---------------------------------------	--	--	--	-------



CATEGORY	A	B	C	D
S-ILS 35L	288/18 200 (200-½)			
S-LOC 35L	420/24	332 (400-½)	420/26	332 (400-½)
CIRCLING	740-1	644 (700-1)	740-1¾ 644 (700-1¾)	740-2 644 (700-2)

SE-3, 28 NOV 2024 to 26 DEC 2024

SE-3, 28 NOV 2024 to 26 DEC 2024