

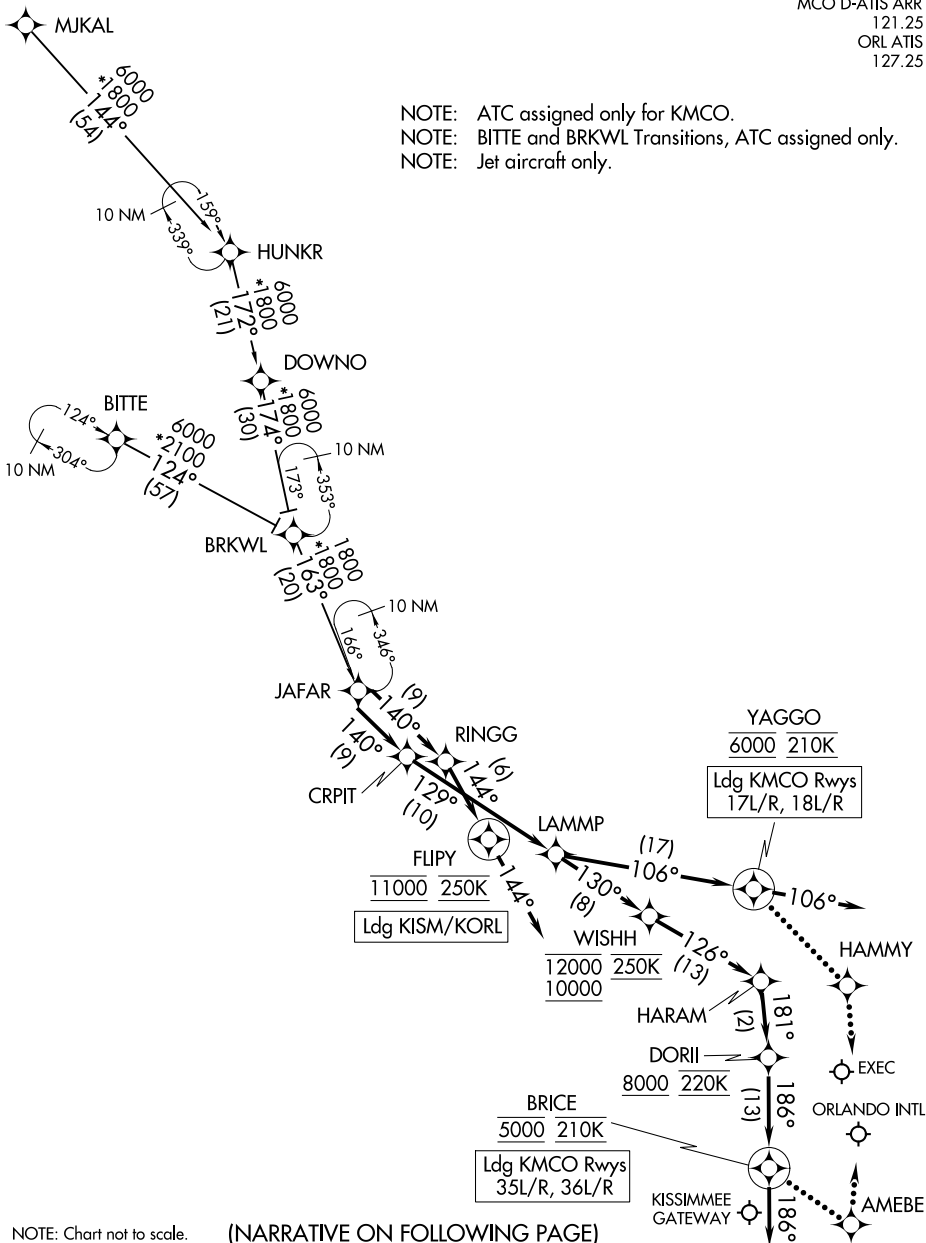
# JAFAR THREE ARRIVAL (RNAV)

ORLANDO, FLORIDA

RNAV 1 - DME/DME/IRU or GPS.
RADAR required.

ORLANDO APP CON  
134.05 339.8  
ISM ATIS  
128.775  
MCO D-ATIS ARR  
121.25  
ORLATIS  
127.25

NOTE: ATC assigned only for KMCO.  
NOTE: BITTE and BRKWL Transitions, ATC assigned only.  
NOTE: Jet aircraft only.



NOTE: Chart not to scale.

(NARRATIVE ON FOLLOWING PAGE)

# JAFAR THREE ARRIVAL (RNAV)

ORLANDO, FLORIDA

SE-3, 28 NOV 2024 to 26 DEC 2024

SE-3, 28 NOV 2024 to 26 DEC 2024

ARRIVAL ROUTE DESCRIPTION

BITTE TRANSITION (BITTE.JAFAR3)  
BRKWL TRANSITION (BRKWL.JAFAR3)  
MJKAL TRANSITION (MJKAL.JAFAR3)

KMCO: From JAFAR on track 140° to CRPIT, then on track 129° to LAMMP.

LANDING KMCO RUNWAYS 17L/R, 18L/R: From LAMMP on track 106° to cross YAGGO at 6000 and at 210K, then on track 106°. Expect RADAR vectors to final approach course.

LANDING KMCO RUNWAYS 35L/R, 36L/R: From LAMMP on track 130° to cross WISHH between 10000 and 12000 and at 250K, then on track 126° to HARAM, then on track 181° to cross DORII at or above 8000 and at 220K, then on track 186° to cross BRICE at 5000 and at 210K, then on track 186°. Expect RADAR vectors to final approach course.

LANDING KISM/KORL: From JAFAR on track 140° to RINGG, then on track 144° to cross FLIPY at 11000 and at 250K, then on track 144°. Expect RADAR vectors to final approach course.

LOST COMMUNICATIONS

KMCO LANDING NORTH: Continue track to BRICE, then proceed direct AMEBE, intercept Rwy 36L final approach course, conduct approach.

KMCO LANDING SOUTH: Continue track to YAGGO, then proceed direct to HAMMY, intercept Rwy 18R final approach course, conduct approach.

SE-3, 28 NOV 2024 to 26 DEC 2024

SE-3, 28 NOV 2024 to 26 DEC 2024