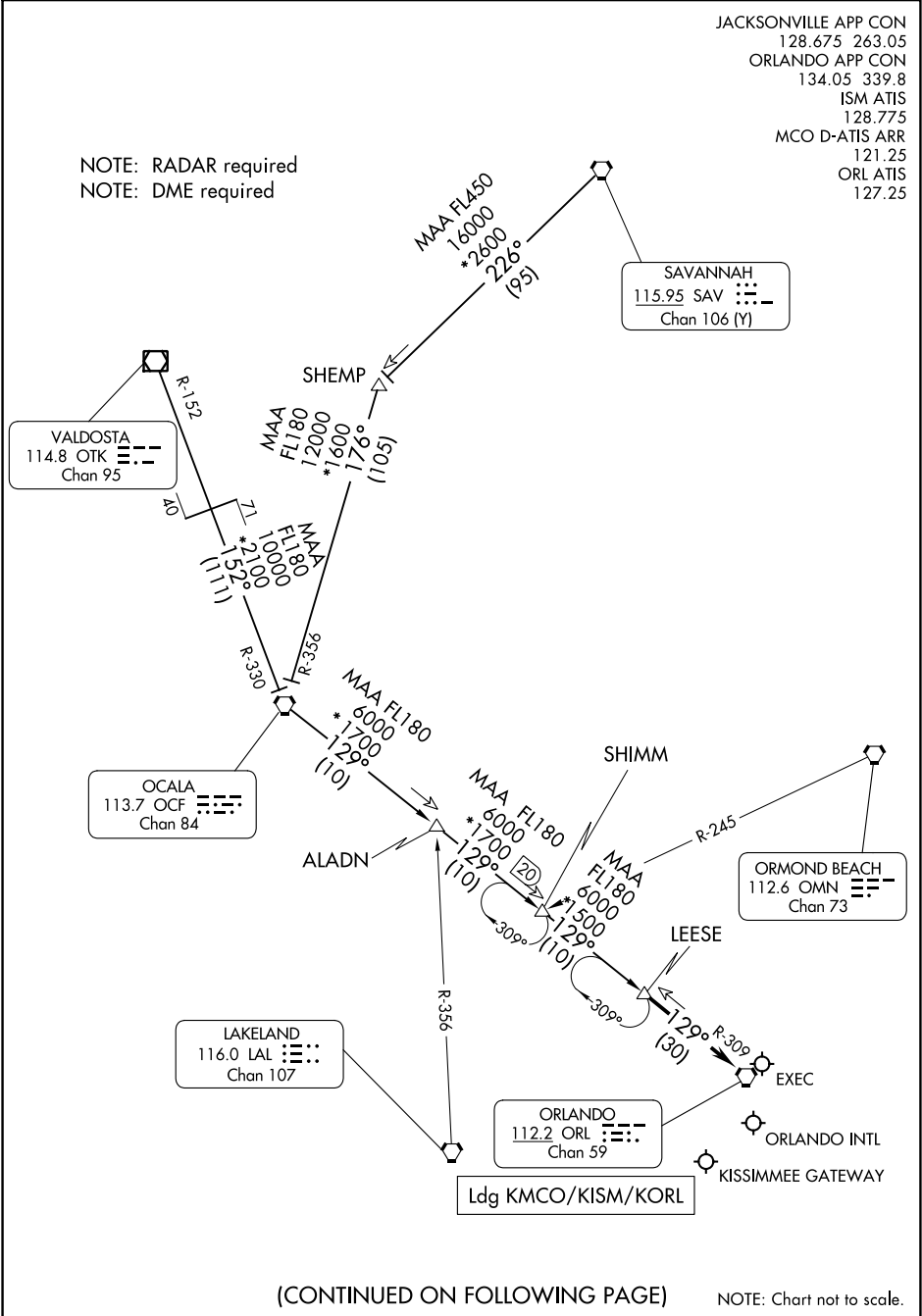


LEESE THREE ARRIVAL

ORLANDO, FLORIDA

JACKSONVILLE APP CON
 128.675 263.05
 ORLANDO APP CON
 134.05 339.8
 ISM ATIS
 128.775
 MCO D-ATIS ARR
 121.25
 ORL ATIS
 127.25

NOTE: RADAR required
 NOTE: DME required



SE-3, 28 NOV 2024 to 26 DEC 2024

SE-3, 28 NOV 2024 to 26 DEC 2024

LEESE THREE ARRIVAL

ORLANDO, FLORIDA

ARRIVAL ROUTE DESCRIPTION

OCALA TRANSITION (OCF.LEESE3): From over OCF VORTAC on OCF R-129 to LEESE. Thence

SAVANNAH TRANSITION (SAV.LEESE3): From over SAV VORTAC on SAV R-226 to SHEMA, then on OCF R-356 to OCF VORTAC, then on OCF R-129 to LEESE. Thence

VALDOSTA TRANSITION (OTK.LEESE3): From over OTK VOR/DME on OTK R-152 and OCF R-330 to OCF VORTAC, then on OCF R-129 to LEESE. Thence

. . . . from LEESE on ORLANDO VORTAC ORL R-309 to ORL VORTAC. Expect RADAR vectors to final approach course after LEESE.

SE-3, 28 NOV 2024 to 26 DEC 2024

SE-3, 28 NOV 2024 to 26 DEC 2024