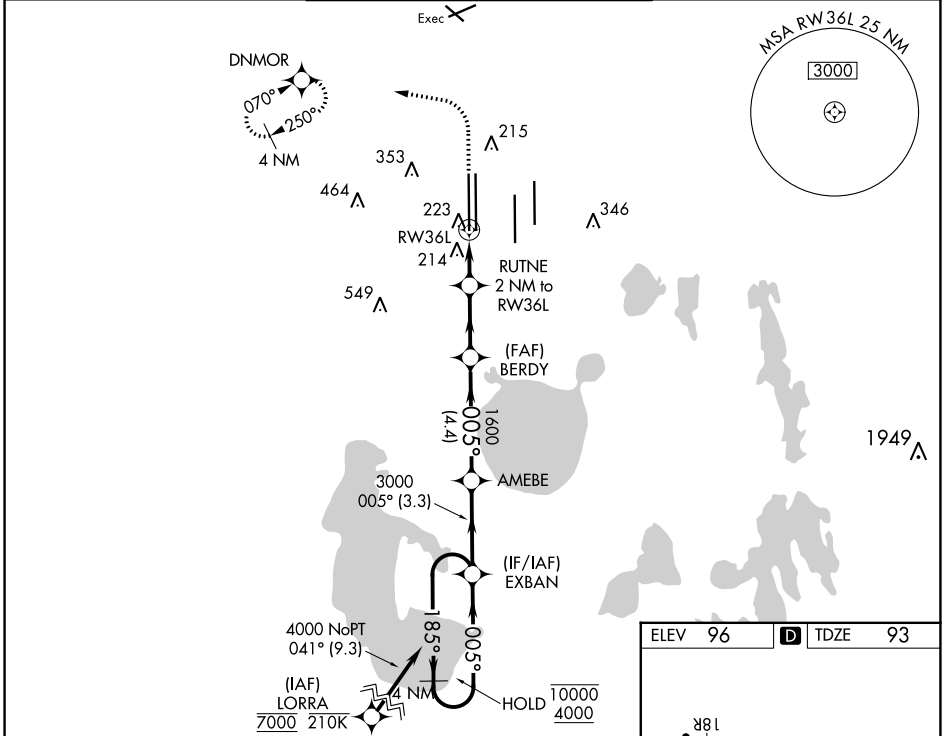


WAAS CH 82313 W36B	APP CRS 005°	Rwy Idg 11621 TDZE 93 Apt Elev 96
--	------------------------	--

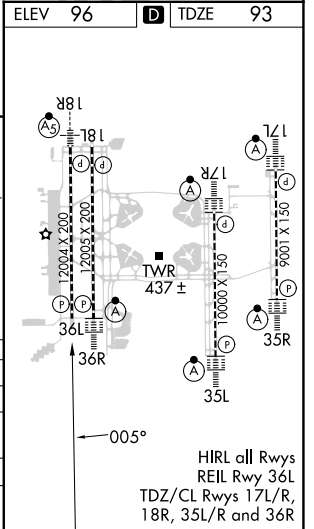
RNAV (GPS) RWY 36L

ORLANDO INTL (MCO)

RNP APCH.		MISSED APPROACH: Climb to 500 then climbing left turn to 3000 direct DNMOR and hold, continue climb-in-hold to 3000.	
<p>▼ Simultaneous approach authorized. LNAV procedure NA during simultaneous operations. Use of FD or AP required during simultaneous operations. For uncompensated Baro-VNAV systems, LNAV/VNAV NA below 1°C or above 54°C.</p>			
D-ATIS ARR 121.25 DEP 120.525	ORLANDO APP CON 124.8 307.0	ORLANDO TOWER 118.45 253.5 (Rwys 17L-35R, 17R-35L) 124.3 253.5 (Rwys 18L-36R, 18R-36L)	GND CON 126.4 (East) 121.8 (West)
		CLNC DEL 134.7	CPDLC 341.7



500	3000	DNMOR	VGSi and RNAV glidepath not coincident (VGSi Angle 3.00/TCH 69).		4 NM
		BERDY	AMEBE	EXBAN	Holding Pattern
		RUTNE 2 NM to RW36L	1600	185° → 10000 ← 005° 4000	GP 3.00° TCH 55
		1 NM to RW36L	1.6 NM	3000	
CATEGORY	A	B	C	D	
LPV DA		293/40	200 (200-¾)		
LNAV/VNAV DA		406/45	313 (400-¾)		
LNAV MDA	480/55	387 (400-1)	480/60	387 (400-1½)	
CIRCLING	740-1	644 (700-1)	740-1¾ 644 (700-1¾)	740-2 644 (700-2)	



SE-3, 28 NOV 2024 to 26 DEC 2024

SE-3, 28 NOV 2024 to 26 DEC 2024