

APP CRS <b>183°</b>	Rwy Idg <b>5000</b>
	TDZE <b>372</b>
	Apt Elev <b>372</b>

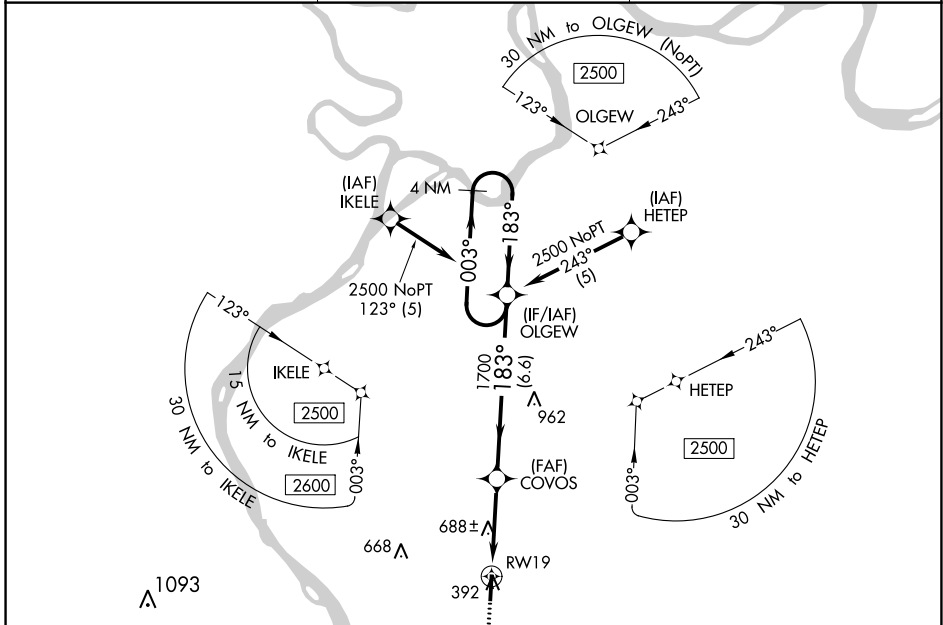
# RNAV (GPS) RWY 19

STURGIS MUNI (TWT)

**NA** DME/DME RNP-0.3 NA. Helicopter visibility reduction below 3/4 SM NA. When local altimeter setting not received, use Henderson altimeter setting and increase all MDA 60 feet, increase LNAV Cats C and D visibility 1/8 mile and Circling Cat C 1/4 mile.

**MISSED APPROACH:** Climb to 2500 direct FITIP and hold.

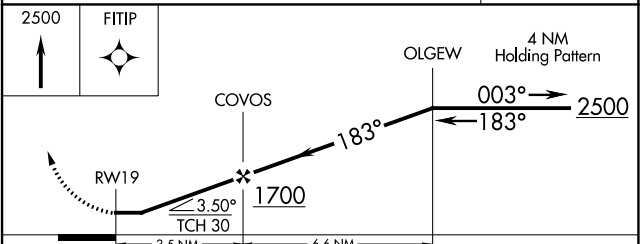
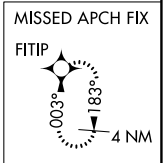
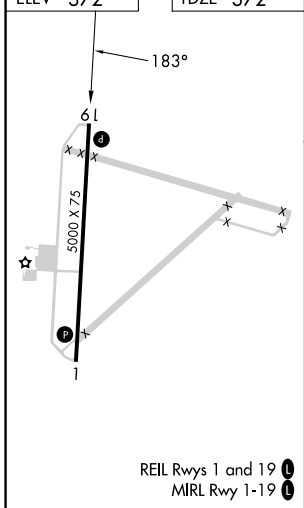
AWOS-3 <b>118.775</b>	EVANSVILLE APP CON ★ <b>124.025 290.9</b>	UNICOM <b>122.8 (CTAF) 0</b>
--------------------------	--	---------------------------------



SE-1, 28 NOV 2024 to 26 DEC 2024

SE-1, 28 NOV 2024 to 26 DEC 2024

ELEV <b>372</b>	TDZE <b>372</b>
-----------------	-----------------



CATEGORY	A	B	C	D
LNAV MDA	940-1	568 (600-1)	940-1 5/8	568 (600-1 5/8)
<b>C</b> CIRCLING	940-1	1000-1	1000-1 3/4	1120-2 1/2
	568 (600-1)	628 (700-1)	628 (700-1 3/4)	748 (800-2 1/2)