

LOC I-GPT 110.9	APP CRS 137°	Rwy Idg TDZE Apt Elev	9002 27 28
---------------------------	------------------------	-----------------------------	---------------------------------------

ILS Z or LOC Z RWY 14

GULFPORT-BILOXI INTL (GPT)

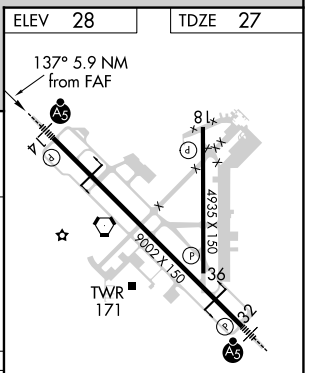
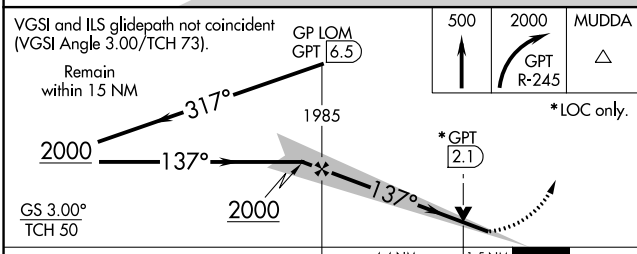
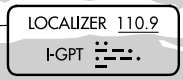
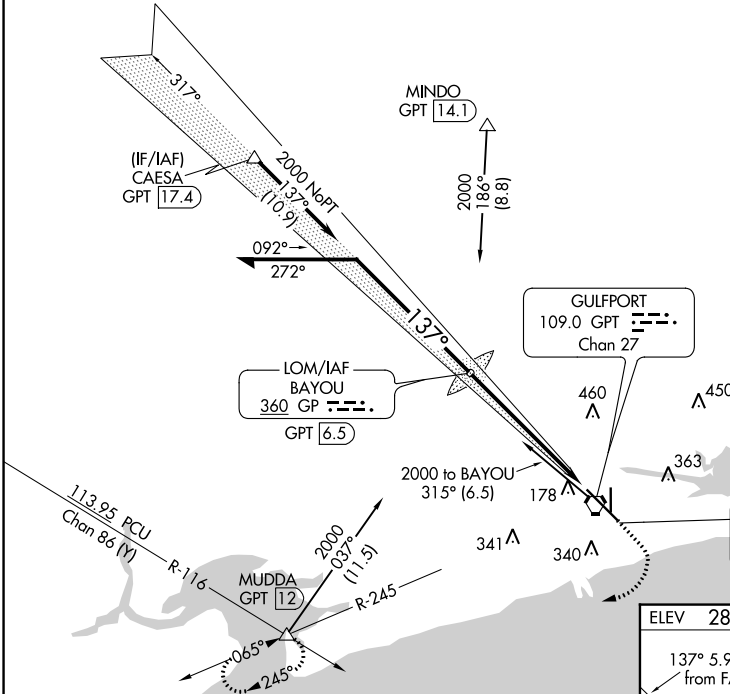
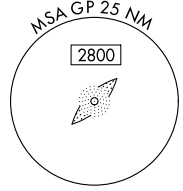
<p>⚠ For inop ALS, increase S-ILS 14 Cat E visibility to RVR 4000 and S-LOC 14 Cat E visibility to 1½ SM. ASR **RVR 1800 authorized with use of FD or AP or HUD to DA.</p>	<p>MALSR</p>	<p>MISSED APPROACH: Climb to 500 then climbing right turn to 2000 on GPT VORTAC R-245 to MUDDA INT/12 DME and hold.</p>
--	---------------------	---

<p>ATIS 119.45</p>	<p>GULFPORT APP CON * 127.5 254.25</p>	<p>GULFPORT TOWER * 123.7 (CTAF) 0 339.8</p>	<p>GND CON 120.4 348.6</p>	<p>UNICOM 122.95</p>
-------------------------------	---	---	---------------------------------------	---------------------------------

Procedure NA for arrivals at CAESA on V552 westbound.

1549

ALTERNATE MISSED APCH FIX



CATEGORY	A	B	C	D	E	
S-ILS 14**	227/24 200 (200-½)					
S-LOC 14	560/24	533 (600-½)	560/55		533 (600-1)	
CIRCLING	560-1	640-1	820-2¼	820-2½	820-2¾	
	532 (600-1)	612 (700-1)	792 (800-2¼)	792 (800-2½)	792 (800-2¾)	
	Knots					60 90 120 150 180
	Min:Sec					5:54 3:56 2:57 2:22 1:58

HIRL Rwy 14-32

MIRL Rwy 18-36

FAF to MAP 5.9 NM

SC-4, 28 NOV 2024 to 26 DEC 2024

SC-4, 28 NOV 2024 to 26 DEC 2024